

FS 413

Spare Parts

Piezas de repuesto

Pieces de rechange

Ersatzteile

Reserveonderdelen

Ricambi

Peças sobresselente

Reservdelar

Reference Information:

Model No.: _____

Serial No.: _____

Date Purchased: _____

NOTES:

[illegible]

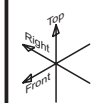
FS 413 Husqvarna

PART NO.	POS.	DESCRIPTION	PART NO.	POS.	DESCRIPTION
501 97 95-02	A	Plate, Engine Mount	542 20 21-31	J1	Bar, Straight Finished
501 97 96-02	A	Bracket, Back Axle - Husq	542 20 21-50	H	Belt, PK Section, 12 Gr x 775mm
504 03 12-02	E	Handle Weldment	542 20 21-51	H	Oil Drain - compl
539 30 00-72	H	Hose Clamp Worm Drive	542 20 21-52	H	Hose Assy Oil Drain
539 30 00-92	G	Key, Woodruff (ANSI #405)	542 20 21-63	E	Wheel Depth Gauge
539 30 05-00	H	Engine 13 Hp Honda	542 20 21-64	E	Bracket Depth Gauge, Zinc Plated
539 30 05-56	E	Tach/Hour Meter	542 20 21-65	G	Spring, Lifting
539 91 27-57	H	Key 1/4" (6.3mm) Sq x 1.25 (31.8mm)	542 20 21-66	G	Bracket, Spring Adjust, Pltd
539 97 69-41	H	Capscrew, Hex Hd 3/8-16 x 1.25 Gr5	542 20 21-69	E	Cap Round Vinyl
539 99 02-58	G	Nut, Hex 1/2"-13	542 20 21-71	D	Plate Rivet, Plated
541 20 09-86	H	Deflector Exhaust GX270/390	542 20 21-81	I	Engine Cage - Right
541 20 51-97	H	Capscrew, Hx Hd 5/16-24 x 1.0 Gr5	542 20 21-82	I	Engine Cage - Left
541 20 71-61	G	Handle Assembly	542 20 21-84	I,K1,K2	Washer Tube 8mm ID
541 20 71-76	G	Hand Crank Assembly	542 20 21-85	I	Bar Tank Pivot
541 20 71-88	B	Slinger	542 20 21-86	I	Bar Lifting Bail
541 20 72-40	B	Tube, Bladeshaft	542 20 21-87	I	U-Bolt
541 20 72-41	A,B	Bladeshaft Assy	542 20 21-88	I	Washer Tube 12mm ID
541 20 81-60	B	Bearing, Ball 62052-RS-C3	542 20 22-16	G	Grease Zerk, M8 x 1.0, 90 Deg.
541 20 81-90	H	Plate Tensioner Black	542 20 22-36	E	Throttle Control w/ Cable
541 20 81-94	H	Spacer Idler Sheave	542 20 22-70	J2	Pointer, Dual - compl
541 20 81-95	H	Sheave Idler	542 20 22-71	J2	Bar, Outside - Dual Pointer
541 20 81-96	H	Idler Sheave -compl	542 20 22-74	J2	Bar, Inside - Dual Pointer
541 20 81-97	H	Sheave PK, 67mm 25.4mm 12 Groove B/O	542 20 22-83	G	Spring, Extension
541 20 82-30	N1,N2	Bearing 8mm	542 20 22-89	A	Stud, M10-1.5 x 52mm
541 20 82-37	N1	Steel Guard - Rear	542 20 22-92	B	Wrench, 27mm Open
541 20 82-40	N1	Steel Guard - Front	542 20 23-00	G	Capscrew, Hex Hd M12-1.75x190 10.9 DIN 933
541 20 82-45	N1,N2	Plate Spade Retaining Finished	542 20 23-07	D	Pad, Resilient
541 20 82-46	N1,N2	Cover Blade Shaft Finished	542 20 23-08	M	Fitting, Hose Swvl 3/4" FGH x 1/2" NPTM
541 20 82-49	N1,N2	Blade Guard Pivot Tube Plated	542 20 23-09	E	Emergency Stop Switch
541 20 82-63	N1,N2	Fitting 1/4 BSP x 6mm Barb 90deg	542 20 23-11	L,M	Bracket, Hose Support
541 20 82-65	N1	Tube, 10mm ODx2mm Wall	542 20 23-15	M	Water Side - compl
541 20 82-78	D	Hinge Rubber	542 20 23-20	M	Tank - Fitting Assy
541 20 82-79	E	Shoulder Bolt M10 x 30	542 20 23-21	M	Fitting, 1/2" NPTM x 12mm Barb
541 20 82-81	D	Latch, 1/4 Turn	542 20 23-34	E	Pin, Locking Z/P
541 20 82-84	L,M	Cap, Water	542 20 23-38	G	Collar, Set
542 04 56-40	M	Washer-Filter	542 20 23-40	M	Fitting Adapter, 3/8" NPTM x 1/2" NPTF
542 13 92-73	C,H	Bearing, Ball 6204-2RS-C3	542 20 23-42	E	Console - Husq
542 13 95-37	M	Valve, Water 1/2" FPT	542 20 23-47	D	Cover Console - Husq
542 13 95-68	E	Grip, Handle	542 20 23-48	D	Side, Right - Husq Orange
542 16 11-96	A	Isolator 30-35 Durometer	542 20 23-49	D	Side, Left - Husq Orange
542 16 12-35	D	Decal: PATENT PENDING	542 20 23-50	D	Door, Toolbox - Husq Orange
542 16 27-61	K1,K2	Clamp, Cord	542 20 23-51	D	Cover, Toolbox - Husq Orange
542 16 66-24	L	Fastener, Tufflock	542 20 23-52	D	Bottom, Toolbox - Husq Orange
542 16 71-33	H	Adapter M12 x 10mm Hose Barb	542 20 23-59	H	Plate, Belt Guard - Husq Gray
542 16 71-85	B	Collar, Inner, 4.50"	542 20 23-60	N1	Blade Guard - Compl - 18" [450mm]
542 16 73-06	H	Cap - Oil Drain	542 20 23-62	N1	Blade Guard, Rear - compl -18" [450mm]
542 16 76-22	H	Nut Tube M16	542 20 23-63	N1	Blade Guard, Front - compl -18" [450mm]
542 16 78-46	B	Nut, Bladeshaft 5/8-11 L.H.	542 20 23-67	G	Nut Tube - Husq
542 16 78-47	B	Nut, Bladeshaft 5/8-11 R.H.	542 20 23-68	G	Raise/Lower Handle
542 16 79-62	B	Outer Collar W/ Pin - 4.50" OD	542 20 23-74	A	Shaft Guard - Husq
542 16 79-64	B	Pin, Drive 3/8" OD x 1-1/8"	542 20 23-75	H	Belt Guard -
542 16 90-65	H	Decal: Hot Muffler	542 20 23-79	G	Insert, Bushing
542 17 21-37	K1,K2	Rope, Nylon 4mm Dia	542 20 23-94	A	Weldment, Brake - Husq Orange
542 17 79-15	G	Screw, 5/8-8 Acme Thread B/O	542 20 23-96	A	Spring, Brake Z/P
542 18 22-52	E	Cord Assy E-Stop	542 20 23-97	A	Pin, Brake Handle - Z/P
542 18 44-55	A	Capscrew, Hex Hd M10-1.5x130 8.8 DIN 931	542 20 23-99	A	Brake - compl
542 19 04-34	G	Bearing, Flange	542 20 24-07	A	Frame - Husq
542 19 05-88	E	Decal: Depth Gauge	542 20 24-16	C	Axle, Front Z/P
542 19 05-93	D	Decal: Toolbox Warning	542 20 24-17	C	Axle, Back Z/P
542 19 06-17	L	Decal: Water Tank	542 20 24-20	C	Weldment, Axle - Husq Orange
542 19 06-37	E	Decal: Console Top	542 20 24-22	C	Lower Framing, Husq Orange - compl
542 19 06-38	E	Decal: Console Back	542 20 40-63	N1,N2	Spray Jet
542 19 07-12	D	Decal: FS 413	542 20 40-64	N1,N2	Splash Flap
542 19 07-33	E	Decal: Husqvarna - 250mm	542 20 40-89	N2	Blade Guard - compl 20" [500mm]
542 19 61-83	M	O-ring, -210 NPR	542 20 40-96	N2	Guard, Rear, Steel - 20" [500mm]
542 19 61-84	M	Fitting, Water Tank	542 20 40-97	N2	Guard, Front, Steel - 20" [500mm]
542 20 20-62	C	Washer Plated	542 20 41-01	N2	Tube, 10mm ODx2mm Wall - 20"
542 20 20-75	J1,J2	Bushing, Spanner	542 20 41-13	E	Spring, Conical
542 20 20-77	J2	Rod, Threaded M10	542 20 41-44	N2	Blade Guard, Rear - compl -20" [500mm]
542 20 20-78	J1	Pointer, Single - compl	542 20 41-45	N2	Blade Guard, Front - compl -20" [500mm]
542 20 20-93	M	Tank, Water	542 20 41-49	L	Nose Piece - Husqvarna
542 20 20-99	D	Nut, Clip, M8 X 1.25	542 20 41-85	A	Spade, Blade Guard - Husq
542 20 21-06	A,J1,J2	Washer Snub, Plated	542 20 82-86	L,M	Water Tank Assy - compl
542 20 21-13	G	Cable Assy	543 04 47-32	H	Washer, Spring
542 20 21-16	G	Spacer	543 04 55-39	M	Valve, 1/2" BSP
542 20 21-28	L	Clip, Nose Piece	543 04 55-80	M	Hose, Wate 12mm ID x 18mm OD (Per M)
542 20 21-30	J1	Bar, Bent Finished	543 04 56-10	M	Quick Coupler, Male

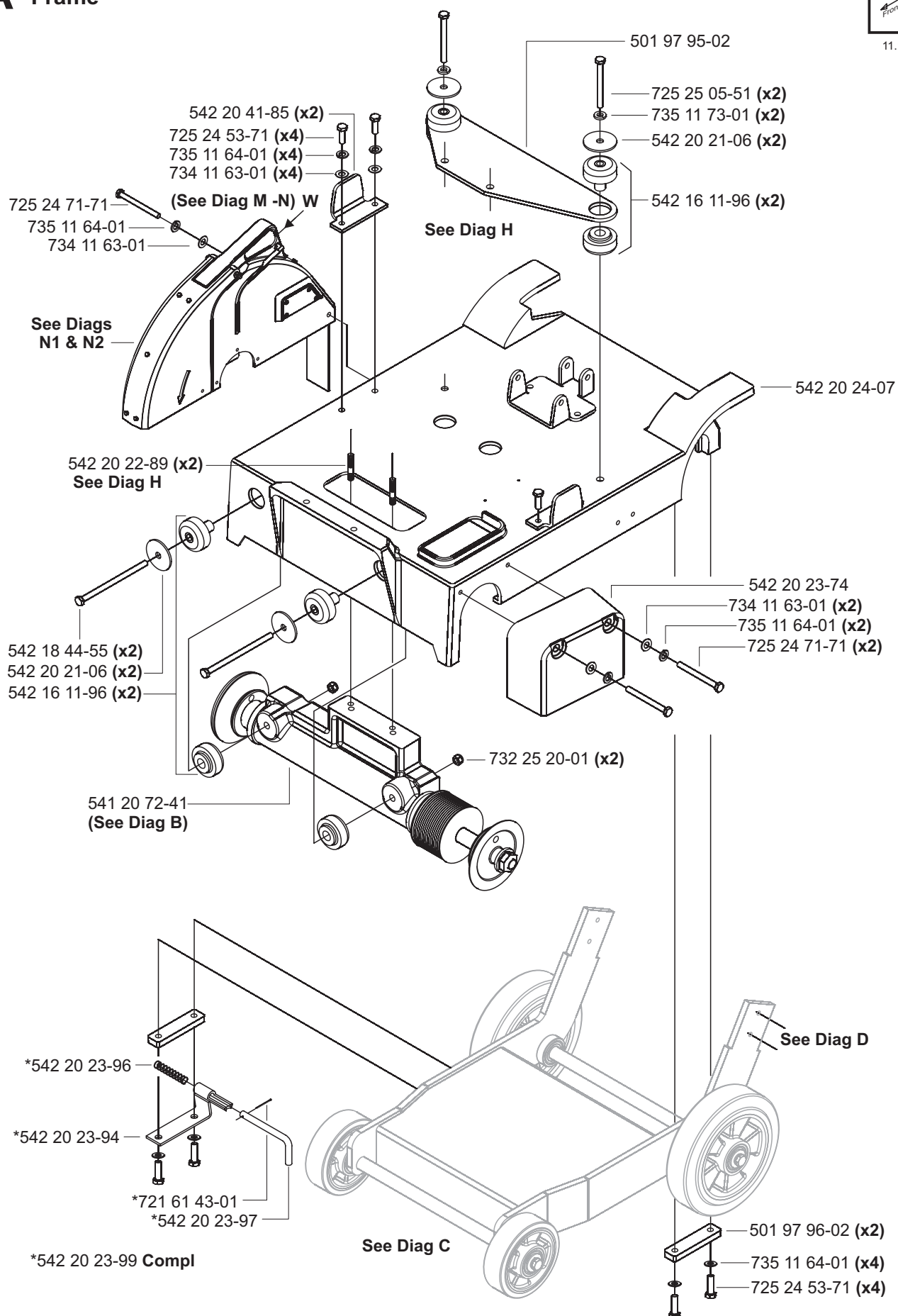
FS 413 Husqvarna

PART NO. POS. DESCRIPTION			PART NO. POS. DESCRIPTION		
543 04 56-12	M	Quick Coupler, Female			
543 04 57-88	D	Decal: Sound Level 108 dB(A)			
543 04 58-91	D	Wrench 13mm			
543 04 59-32	J1,J2	Wheel, Pointer			
543 04 59-49	C	Wheel, Front, 125mm			
543 04 59-51	C	Wheel, Back, 200mm			
543 04 60-31	G	Plug, 1.25" OD			
543 85 01-31	M	Fitting, 1/4" Male x 12mm Barb, 90°			
543 85 03-44	M	Clip, Hose			
543 85 03-59	M	Quick Coupler, Male			
721 61 43-01	A	Pin, Cotter 1.6x22 ISO1234			
721 61 43-01	E	Split Pin 1.6 x 22 ISO 1234 DIN 94			
722 78 18-03	D	Pop Rivet, 3.2 Dia x 6.7mm Alum			
722 79 43-02	D	Pop Rivet, 4.0 Dia x 10.3mm Alum			
724 13 29-51	E,N1,N2	Machine Screw, Pan Hd M5-0.8x16 Z/P			
725 22 91-71	E	Capscrew, Hex Hd M4-0.7x12 8.8 DIN 933			
725 22 95-71	M	Capscrew, Hex Hd M4-0.7x20 8.8 DIN 933			
725 23 31-71	N1,N2	Capscrew, Hex Hd M5-0.8x20 8.8 DIN 933			
725 23 70-71	G	Capscrew, Hex Hd M6-1.0x20 8.8 DIN 933			
725 23 72-71	G	Capscrew, Hex Hd M6-1.0x25 8.8 DIN 933			
725 23 79-51	G	Capscrew, Hex Hd M6-1.0x45 8.8 DIN 931			
725 24 47-71	G,N1,N2	Capscrew, Hex Hd M8-1.25x12 8.8 DIN 933			
725 24 53-71	A	Capscrew, Hex Hd M8-1.25x25 8.8 DIN 933			
725 24 55-71	D,J1,J2	Capscrew, Hex Hd M8-1.25x30 8.8 DIN 933			
725 24 57-71	D,E	Capscrew, Hex Hd M8-1.25x35 8.8 DIN 933			
725 24 60-71	I	Capscrew, Hex Hd,M8-1.25x45 8.8 DIN 933			
725 24 63-51	I,K1,K2	Capscrew, Hex Hd M8-1.25x60 8.8 DIN 931			
725 24 71-51	N1,N2	Capscrew, Hex Hd M8-1.25x100 8.8 DIN 931			
725 24 71-71	A,H	Capscrew, Hex Hd M8-1.25x100 8.8 DIN 933			
725 24 93-71	C	Capscrew, Hex Hd M10-1.5x25 8.8 DIN 933			
725 25 03-51	G	Capscrew, Hex Hd M10-1.5x60 8.8 DIN 931			
725 25 05-51	A	Capscrew, Hex Hd M10-1.5x70 8.8 DIN 931			
725 25 15-71	J1	Capscrew, Hex Hd M10-1.5x120 8.8 DIN 933			
725 25 42-51	H	Capscrew, Hex Hd M12-1.75x50 8.8 DIN 931			
728 73 66-05	H	Set Screw, Socket Hd M6-1.0x12 DIN 916			
729 53 40-01	H	Screw, Pan Hd, S/T ISO 7049 St 4.2x9.5 C-Z			
731 23 20-01	J1,J2	Nut, Hex, M10-1.5 8.8 Din 934			
731 23 22-01	I	Nut, Hex M12-1.75, PC8 DIN 934			
731 43 18-01	E	Nut, Hex, Thin, M8-1.25, PC8 DIN 936			
732 25 12-01	M	Nut, Hex M4-0.7, Locking PC8 DIN 985			
732 25 14-01	N1,N2	Nut, Hex M5-0.8, Locking PC8 DIN 985			
732 25 16-01	G	Nut, Hex M6-1.0, Locking PC8 DIN 985			
732 25 18-01	E,J1,J2,K1,K	Nut, Hex M8-1.25, Locking PC8 DIN 985			
			MISC ITEMS & SPECIAL KITS		
732 25 18-71	N1,N2	Nut, Hex M8-1.25, Locking PC8 DIN 985	542 20 10-77	N/S	OM OP INSTR: FS 413 HUSQ 3-L
732 25 20-01	A,G,H	Nut, Hex M10-1.50, Locking PC8 DIN 985	542 20 10-84	N/S	OM OP INSTR: FS 413 HUSQ 5-L
732 25 22-01	I	Nut, Hex M12-1.75, Locking PC8 DIN 985	542 20 10-78	N/S	IPL PARTS LIST: FS 413 HUSQ
734 11 46-01	N1,N2	Washer, Flat M5 DIN 125			
734 11 52-01	G	Washer, Flat M6 DIN 125	542 20 11-23	M	Inst. Sheet: Water Tank
734 11 63-01	A,D,E,H,	Washer, Flat M8 DIN 125			
734 11 63-01	J2,K1,K2	Washer, Flat M8 DIN 125			
734 11 72-01	H	Washer, Flat M10 DIN 125	504 00 79-01	B	Kit, Blade Shaft Service (Heat Fit)
734 11 74-41	C	Washer, Flat M10 ISO 7093-10-140HV	542 20 24-25	E	Kit, Decal - Control Panel
734 11 78-01	G	Washer, Flat M12 DIN 125			
735 11 36-01	E	Washer, Split M4 DIN 127			
735 11 53-01	G	Washer, Split M6 DIN 127			
735 11 64-01	A,D,E,H,I	Washer, Split M8 DIN127			
735 11 73-01	A,C	Washer, Split M10 DIN127			
735 11 78-01	H	Washer, Split M12 DIN 127			
735 31 40-10	H	Snap Ring 47 x 1.75			

A Frame

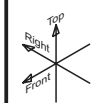


11.14.06

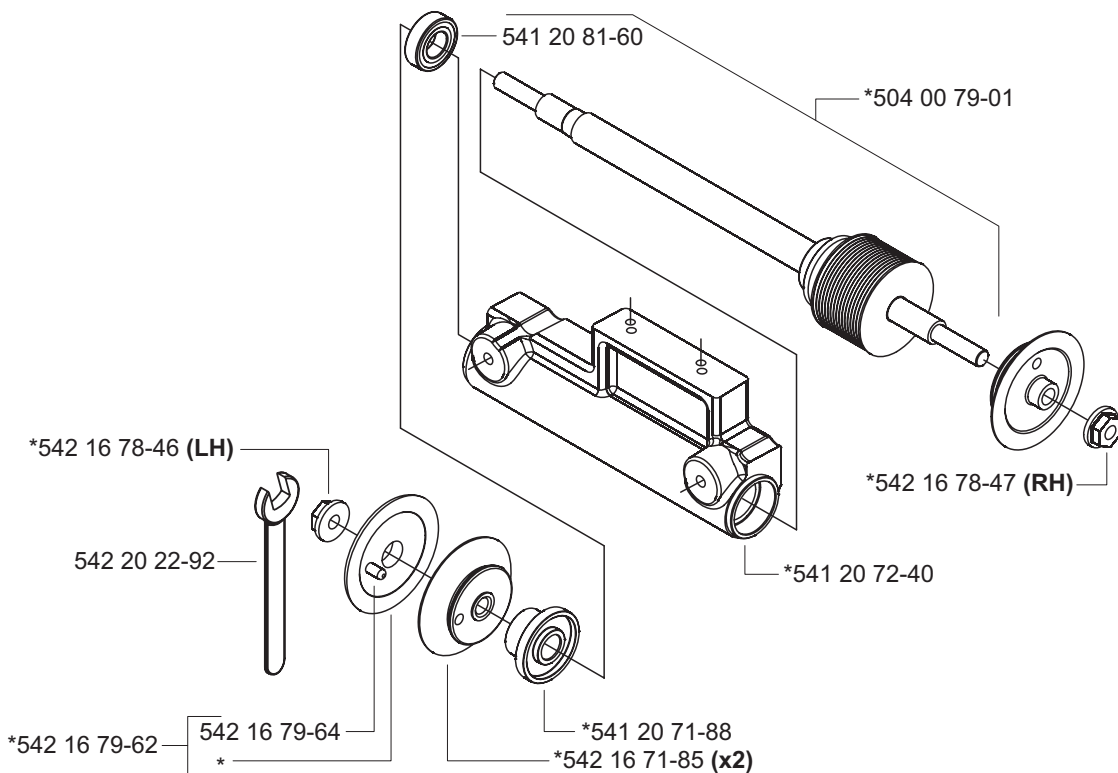


B Bladeshaft

* Compl. 541 20 72-41

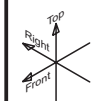


11.08.06

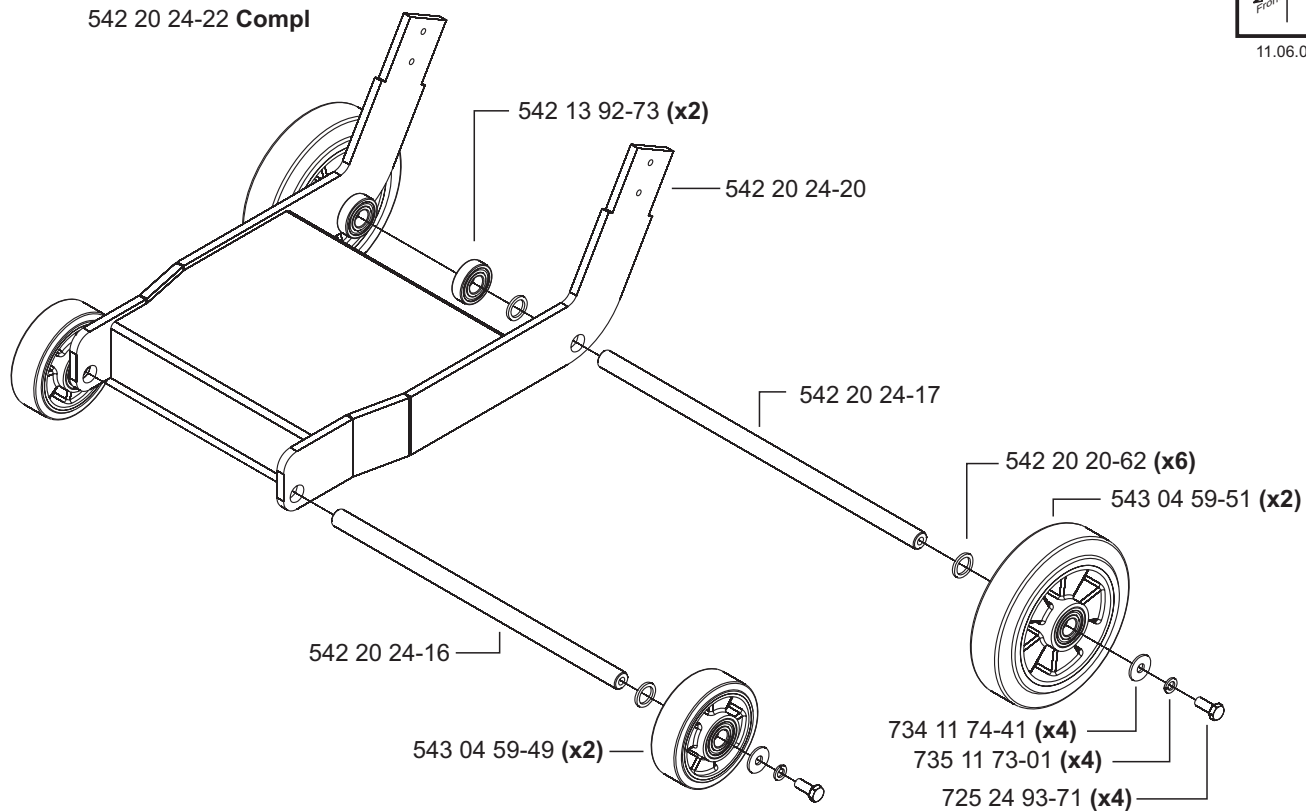


C Lower Framing

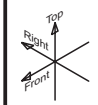
542 20 24-22 Compl



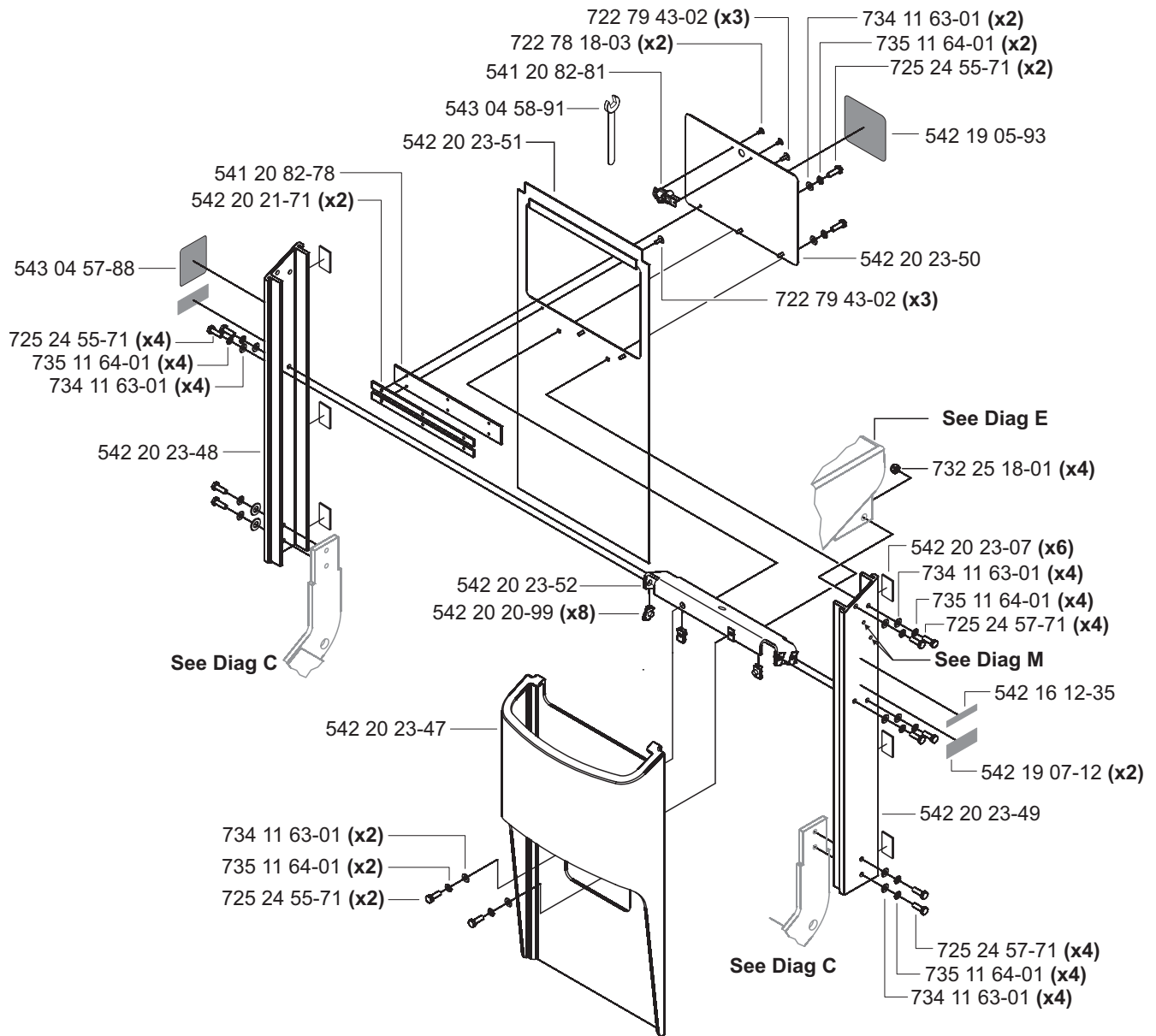
11.06.06



D Toolbox



12.08.06



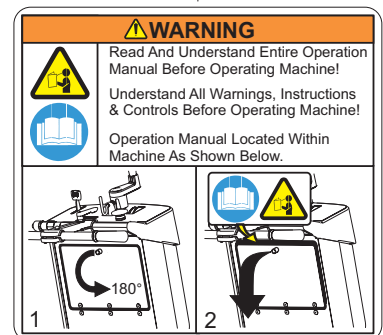
543 04 57-88



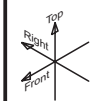
PATENT PENDING — 542 16 12-35

FS 413 — 542 19 07-12

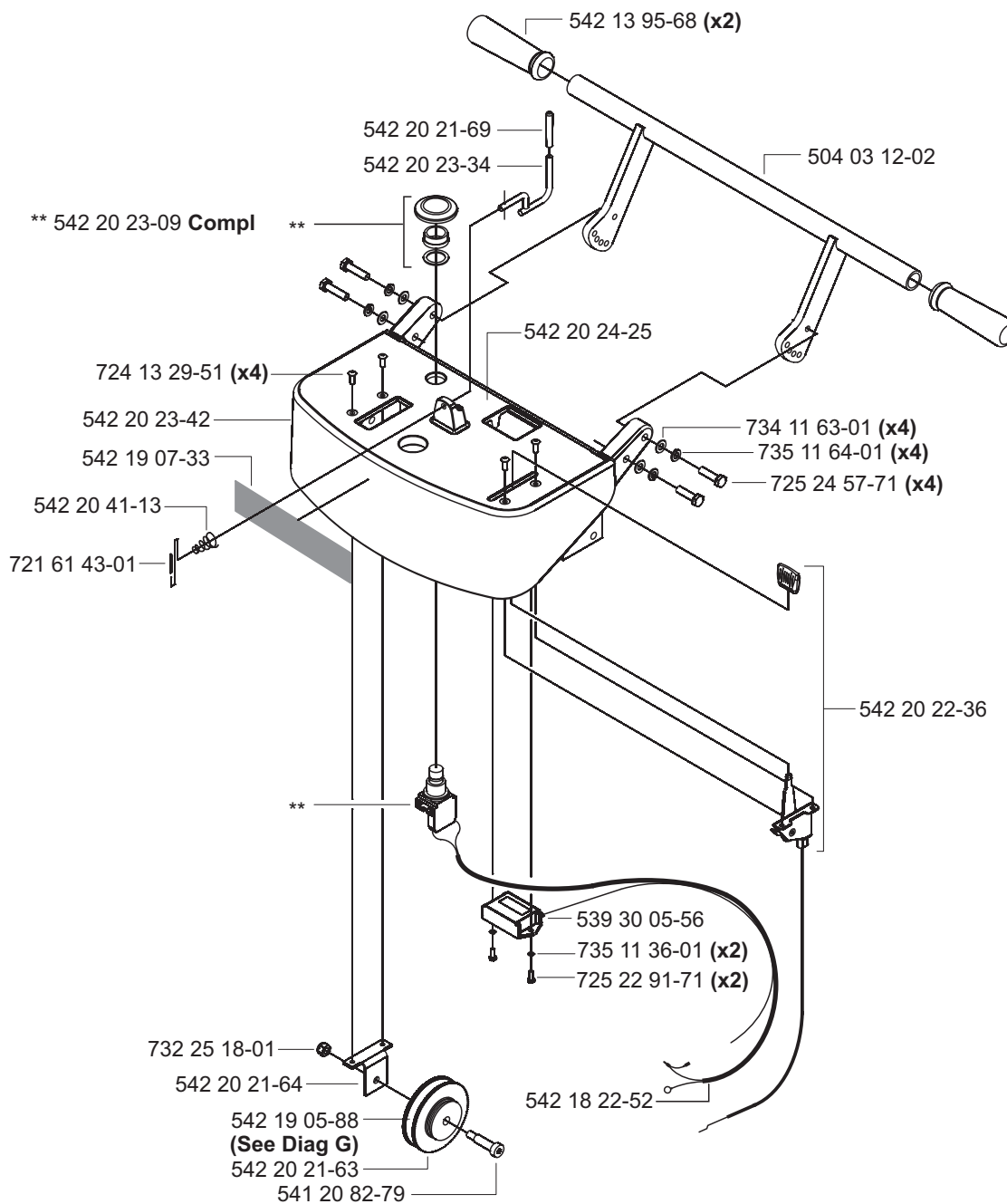
542 19 05-93



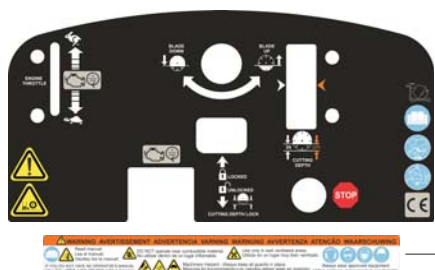
E Control Console



11.29.06



542 19 05-88



542 20 24-25

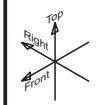
542 19 06-37

542 19 06-38

542 19 07-33

Husqvarna

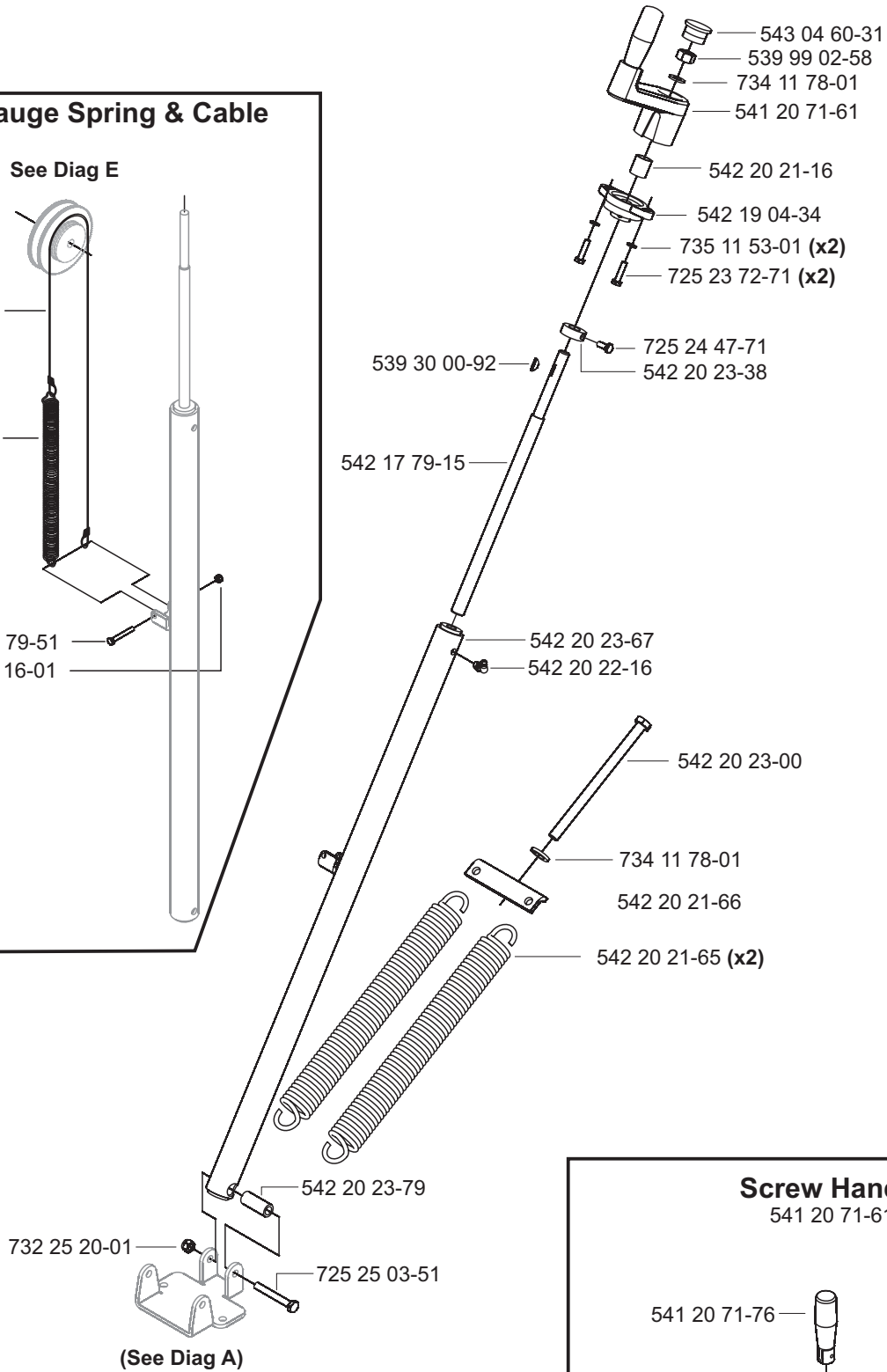
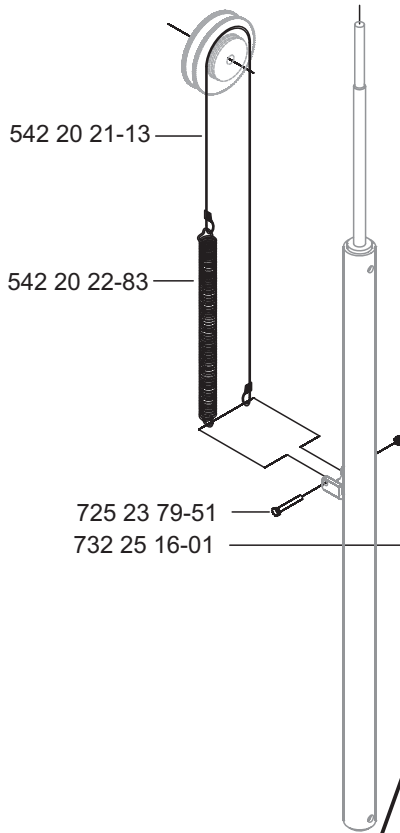
G Screw Feed



11.06.06

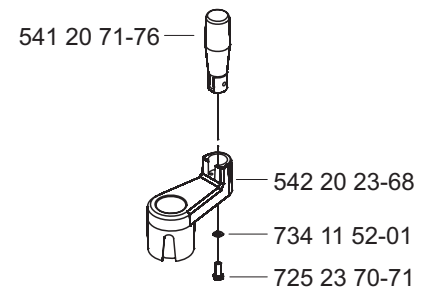
Depth Gauge Spring & Cable

See Diag E

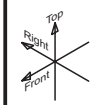


Screw Handle

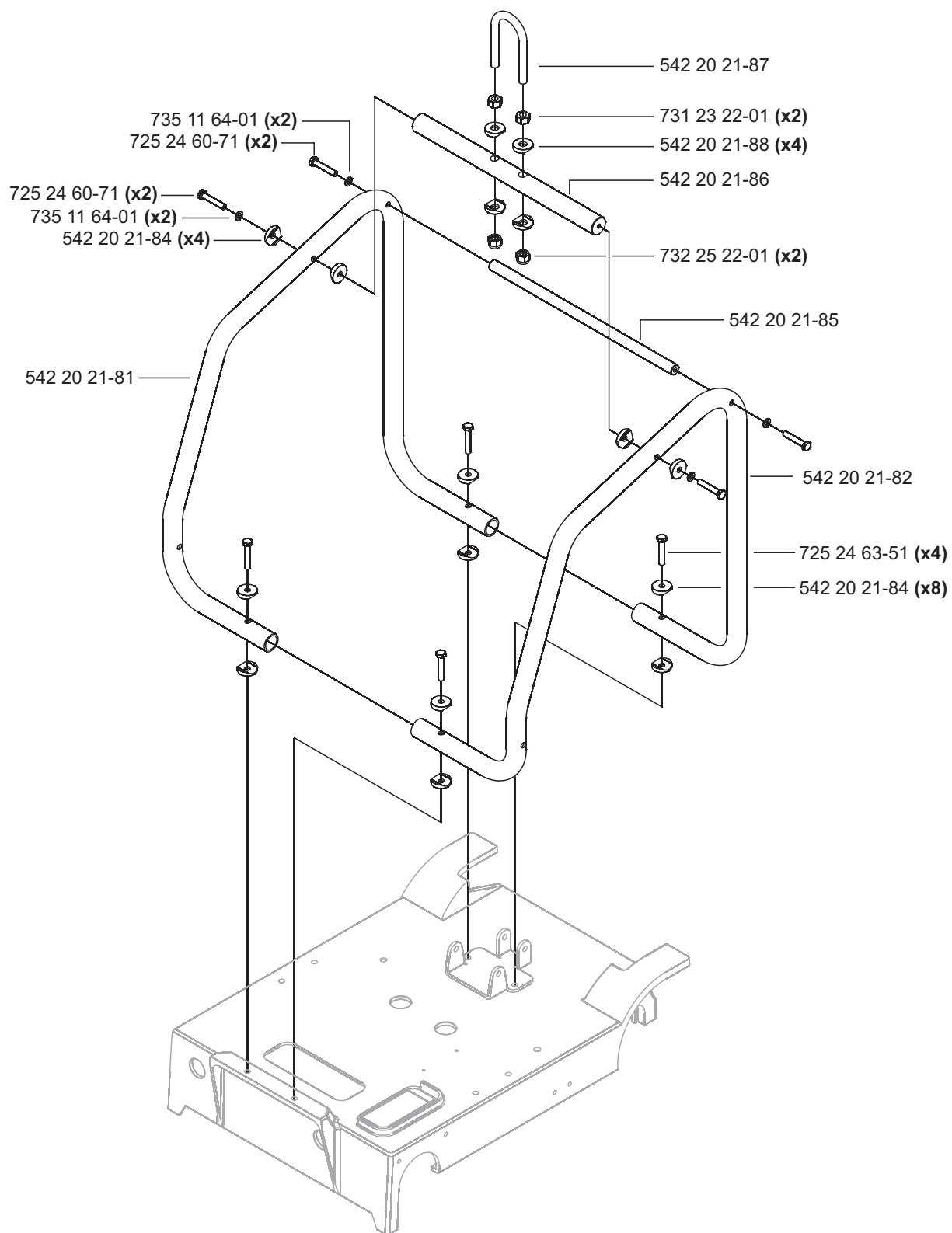
541 20 71-61



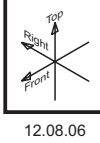
Engine Cage



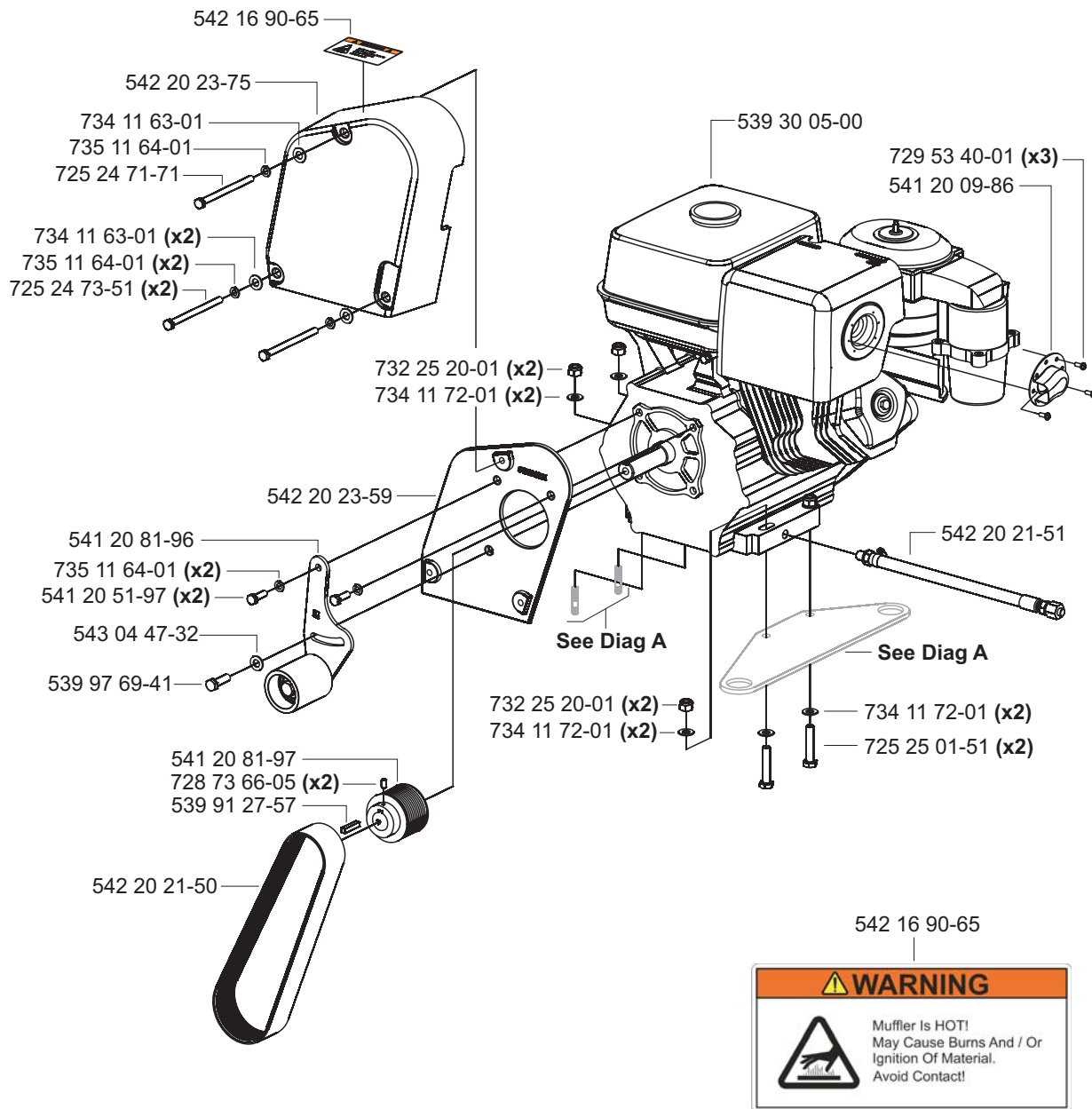
11.06.06



H Engine & Idler

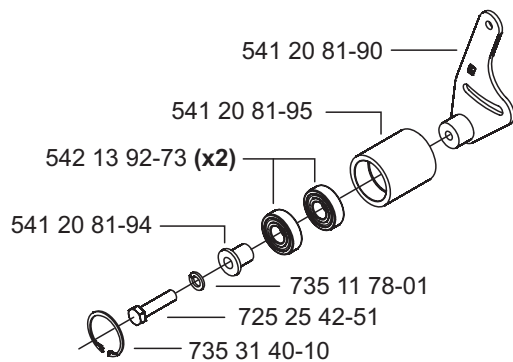


12.08.06



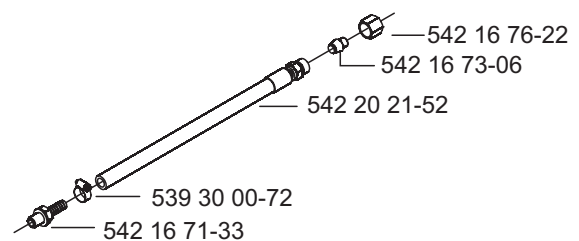
541 20 81-96 Idler - Compl

05.01.06

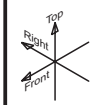


542 20 21-51 Oil Drain - Compl

03.01.06

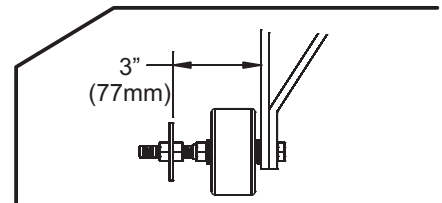
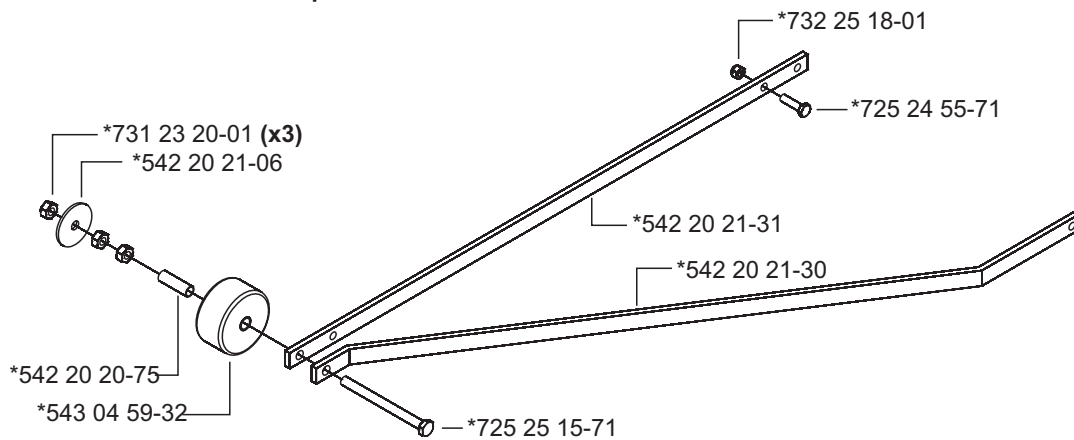


J1 Pointer - ** Single **

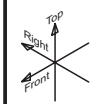


11.09.06

*542 20 20-78 Compl

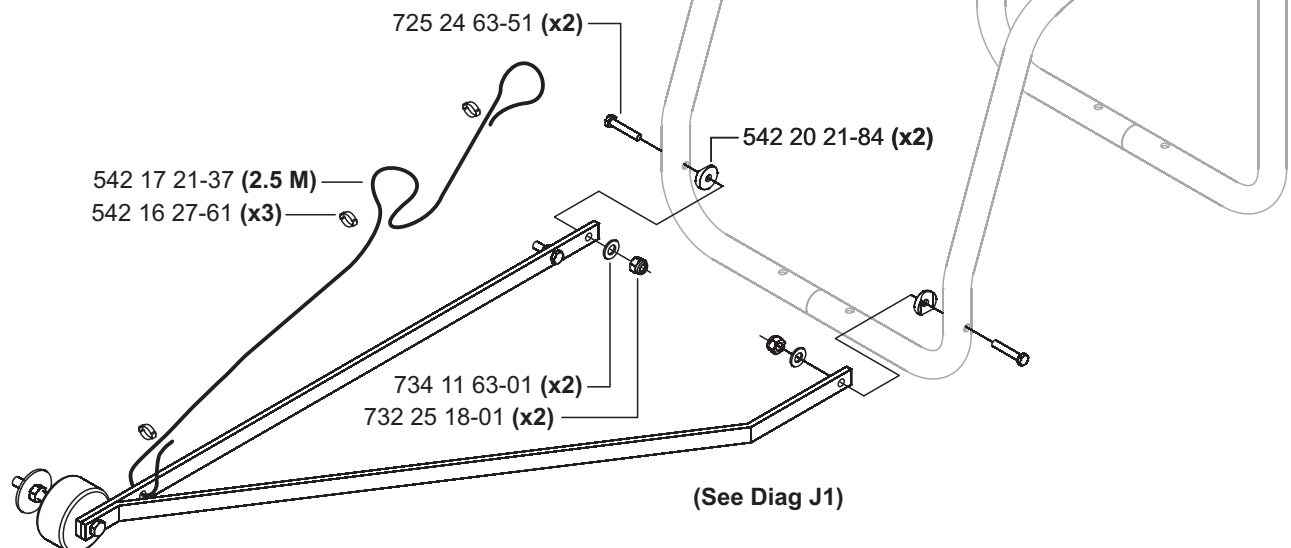


K1 Pointer Attachment ** Single Pointer **

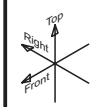


11.06.06

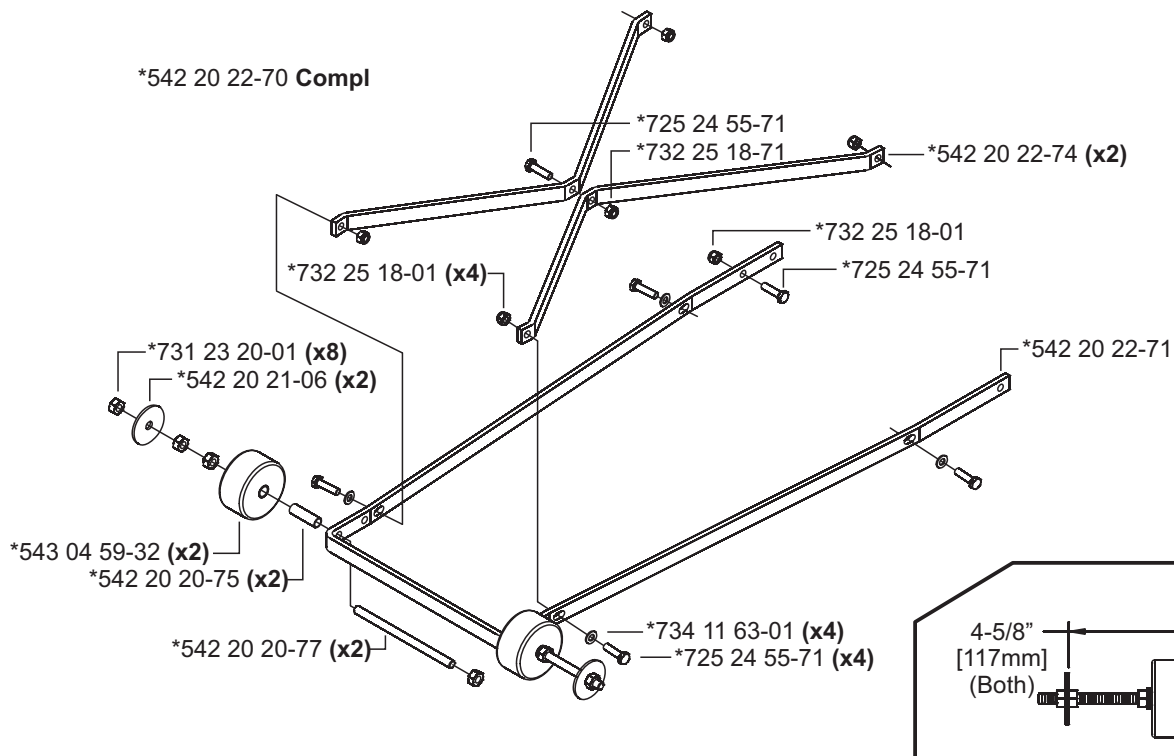
See Diag I



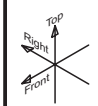
J2 Pointer - ** Dual **



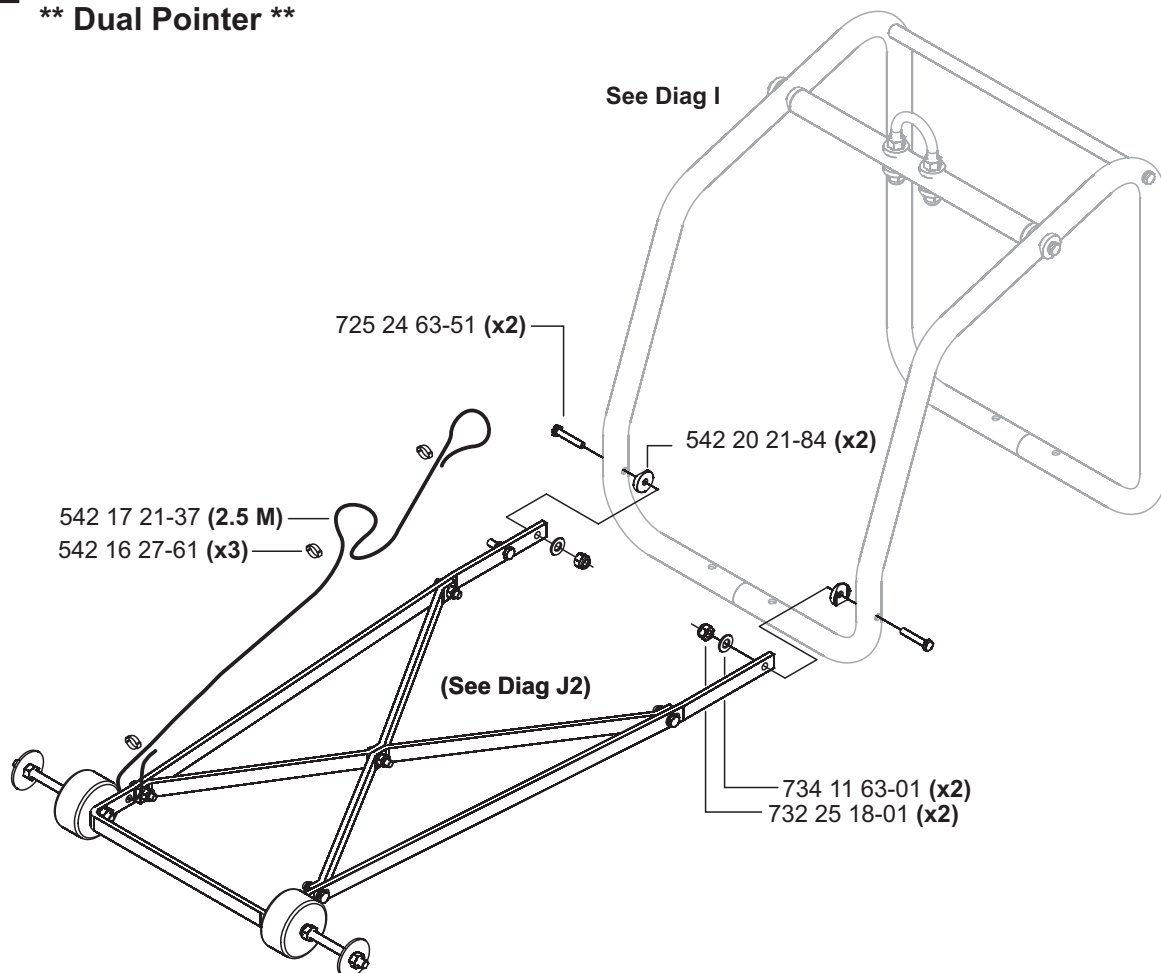
03.07.06



K2 Pointer Attachment ** Dual Pointer **



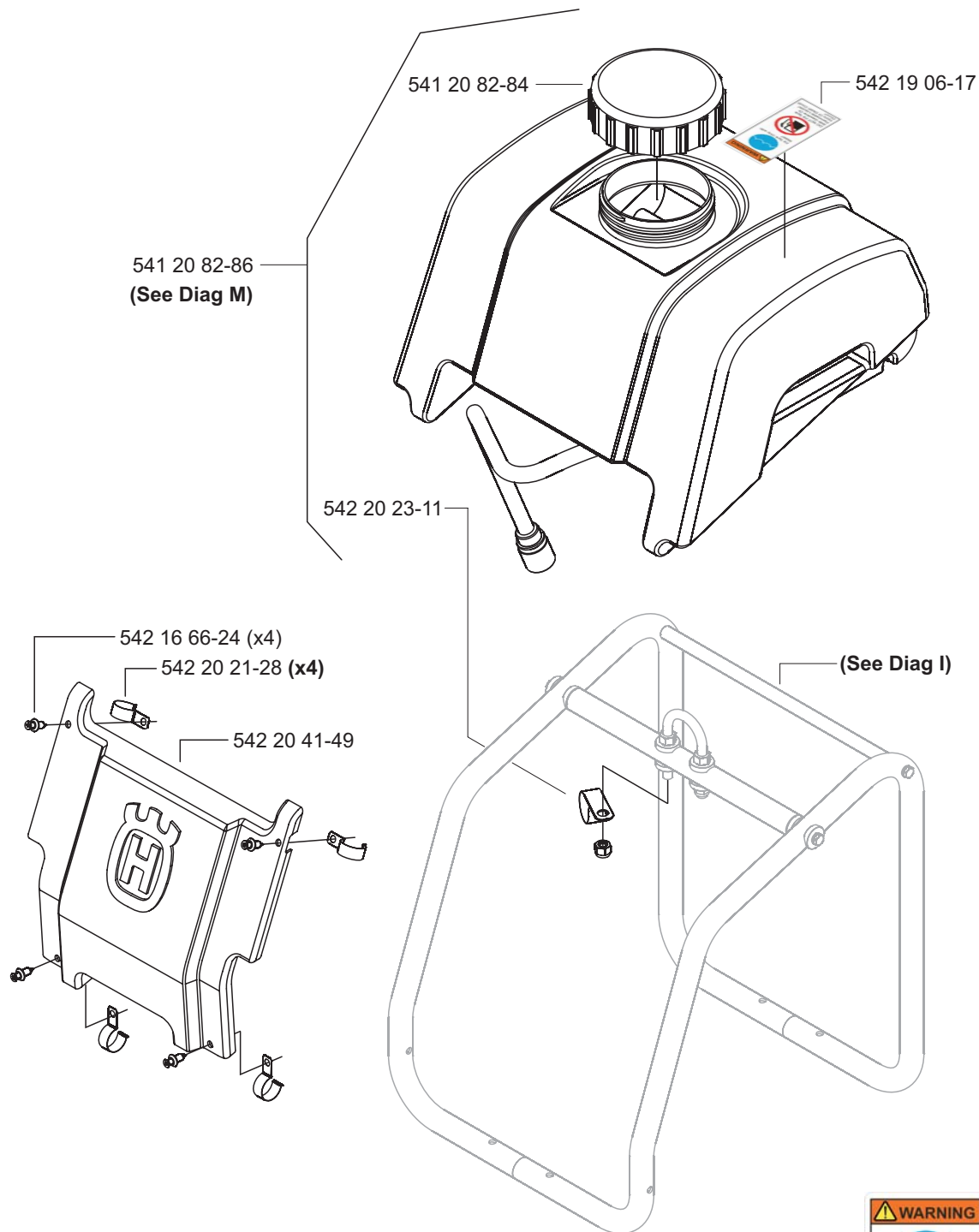
11.06.06



L Water Tank & Nose Piece

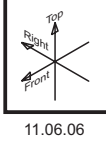


11.06.06

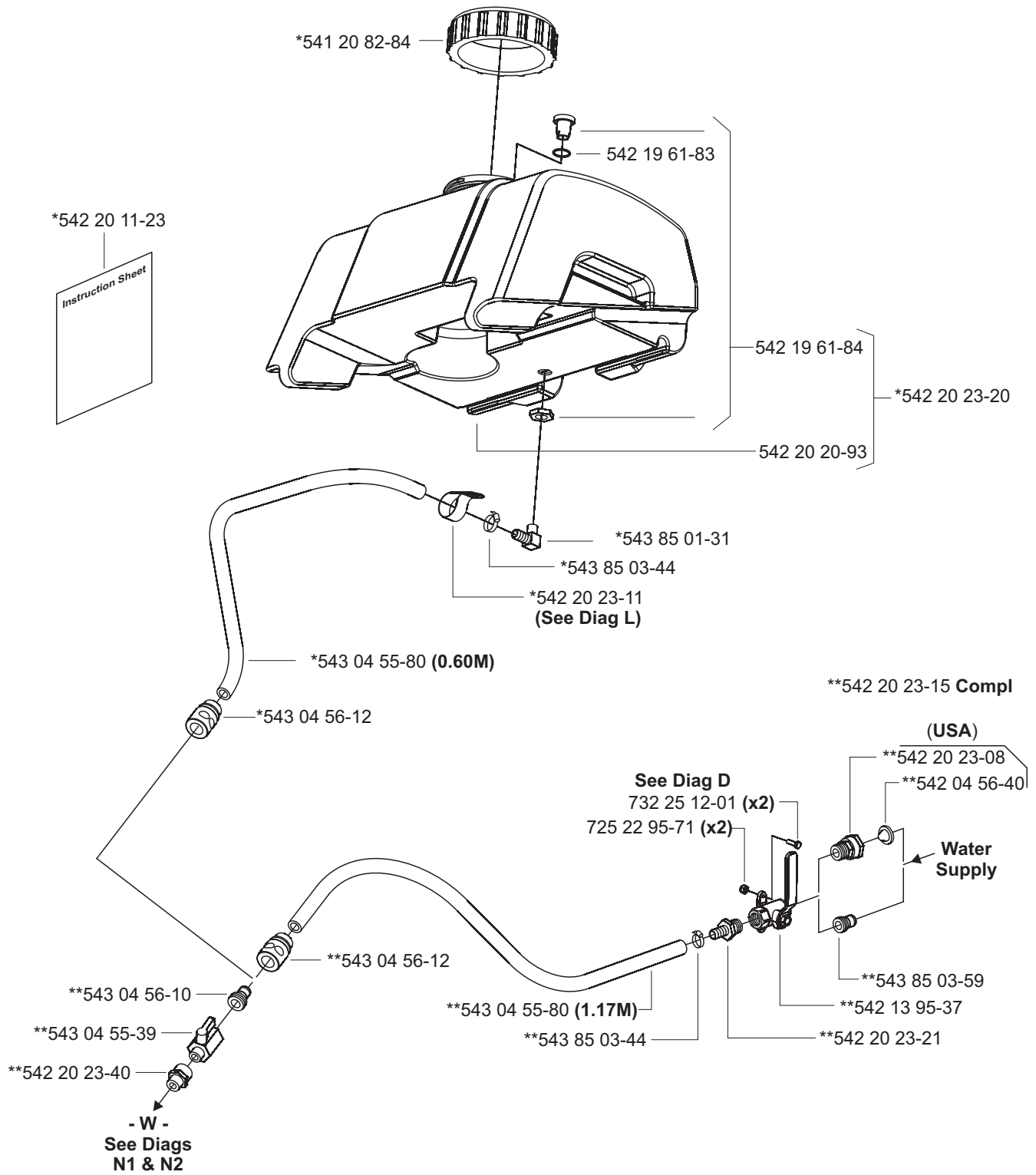


M Water System

* 541 20 82-86 Water Tank Assy - Compl (Optional)



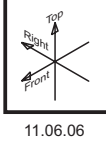
11.06.06



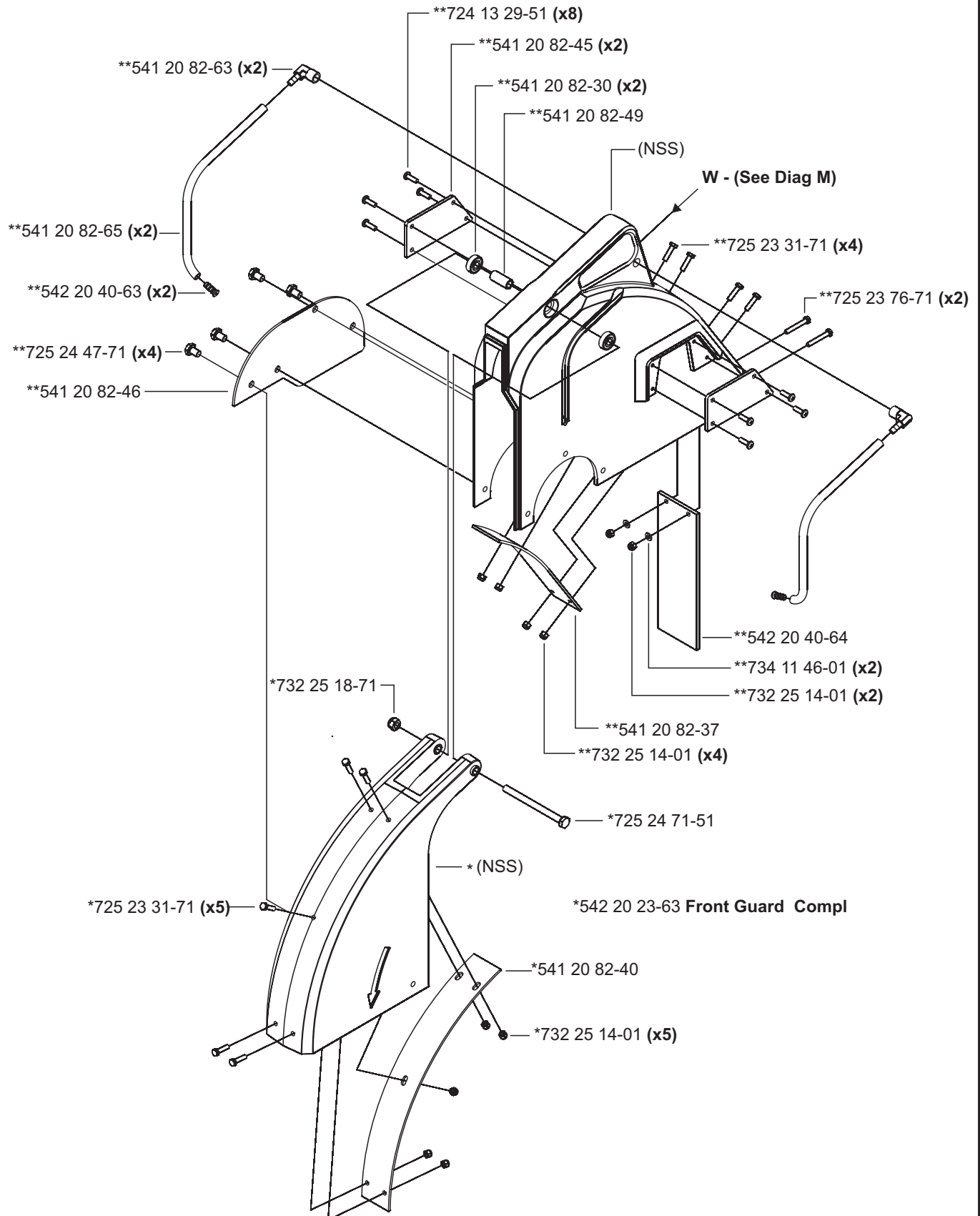
N1 Blade Guard - 18" [450mm]

542 20 23-60 Compl

**542 20 23-62 Rear Guard Compl



11.06.06



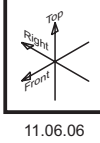
*542 20 23-63 Front Guard Compl

(NSS) - Not Sold Separately

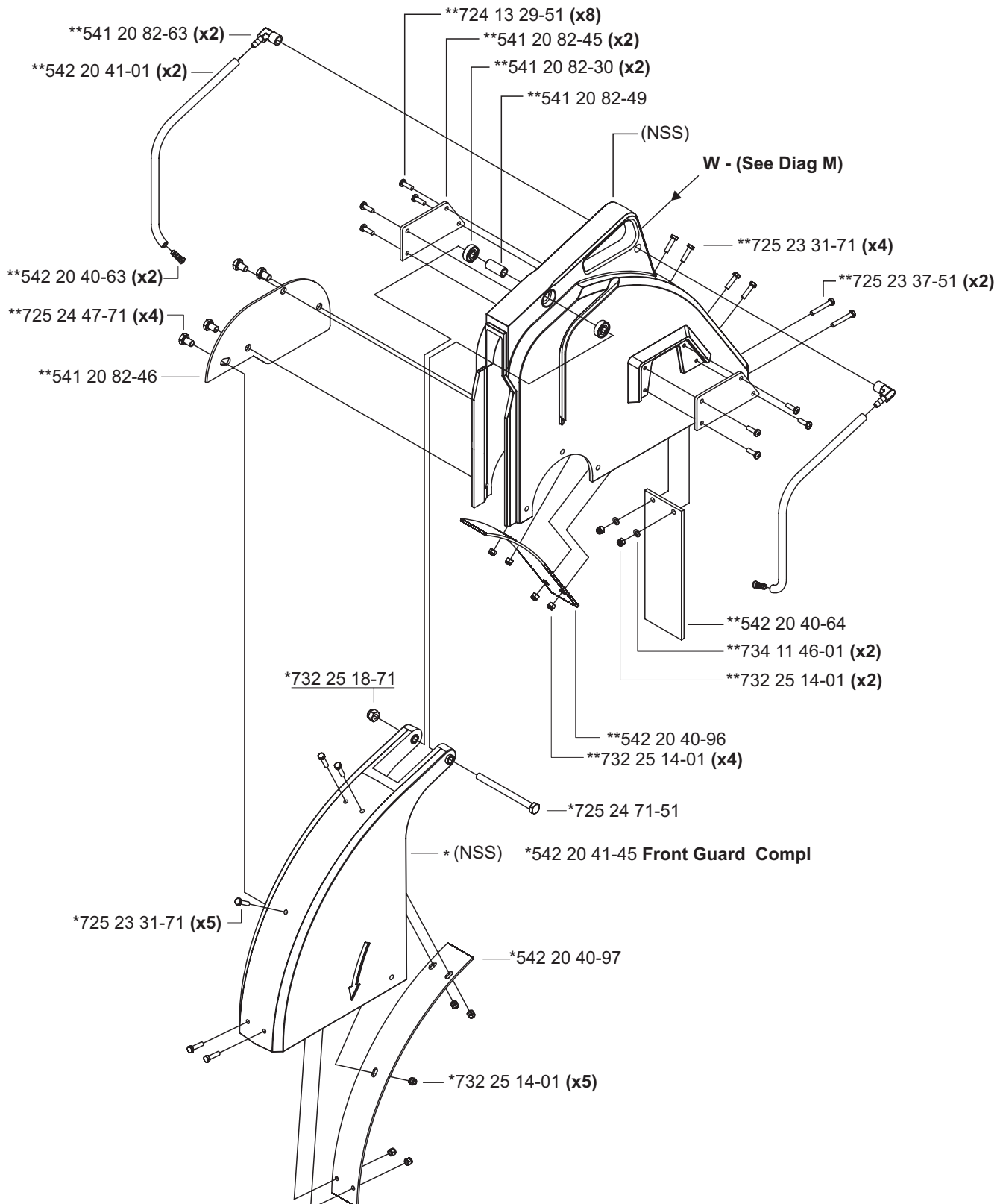
N2 Blade Guard - 20" [500mm]

542 20 40-89 Compl

**542 20 41-44 Rear Guard Compl



11.06.06



(NSS) - Not Sold Separately

[illegible]

Husqvarna Construction Products, North America

Corporate Office

117400 West 119th Street, Olathe, Kansas 66061 USA
Corporate Office: 913-928-1000
Corp. Office Fax: 913-438-7951

www.husqvarna.com

Europa / Europe:

Husqvarna Construction Products

SE-433 81 Partille, Sweden
Tel: +46 31 94 90 00
Fax: +46 31 94 90 50

Asia Pacific:

Husqvarna Construction Products, Australia Pty Ltd

25-31 Kinkaid Avenue,
North Plympton, Alelaide,
South Australia 5037
Tel: +61 (0)8 8375 1000
Fax: +61 (0)8 8371 0900

The Americas:

Husqvarna Construction Products, North America

17400 West 119th Street, Olathe, Kansas 66061 USA
Toll-Free Telephone: 800-288-5040, Telephone: 913-928-1300
Fax: 913-438-7938



DUST WARNING



Cutting, especially when DRY cutting, generates dust that comes from the material being cut, which frequently contains silica. Silica is a basic component of sand, quartz, brick clay, granite and numerous other minerals and rocks. Exposure to excessive amount of such dust can cause:

- Respiratory diseases (affecting your ability to breath), including chronic bronchitis, silicosis and pulmonary fibrosis from exposure to silica. These diseases may be fatal;
- Skin irritation and rash; and
- Cancer according to NTP* and IARC*
* National Toxicology Program / International Agency for Research on Cancer

Take precautionary steps

- Avoid inhalation of and skin contact with dust, mist and fumes;
- Wet cut when feasible, to minimize dust;
- Wear and ensure that all bystanders wear appropriate respiratory protection such as dust masks designed to filter out microscopic particles. (See OSHA 29 CFR Part 1910.1200)

California Prop 65 Warning:

Use of this product can cause exposure to materials known to the State of California to cause cancer and/or birth defects or other reproductive harm.



Printed in China