

## Spare parts list

### Forward plate

	Valid from serial number
LF 100 Honda L 500 mm	27608531
LF 100 Honda LA 500 mm	27608531
LF 100 Honda LAT 500 mm	27608531
LF 100 Hatz L 500 mm	27608531
LF 100 Hatz LAT 500 mm	27608531





# Contents

General information.....	5
Spare parts list.....	6
Engine plate installation, Honda.....	6
Engine plate installation, Hatz.....	8
Ground plate installation.....	10
Block paving plate 500 mm (19.7 in.).....	12
Lifting handle.....	14
Transport device.....	16
Sprinkler system.....	18
Fork lifting device.....	20
Engine installation, Honda.....	22
Engine installation, Hatz.....	24
Transmission cover, Honda.....	26
Transmission cover, Hatz.....	28
Handle, standard.....	30
Vibration damped handle.....	32
Labels.....	34
Kits.....	36
One year service kit, Hatz.....	36
One year service kit, Honda.....	36
Shock absorber repair kit, Hatz.....	36
Shock absorber repair kit, Honda.....	37
Eccentric element repair kit.....	37
Block paving plate kit 500 mm (19.7 in.).....	38
Transport device kit.....	39
Sprinkler system kit.....	40
Fork lifting device kit.....	41
Vibration damped handle kit.....	42



## General information

This spare parts list applies to the following:

Part number	Description
3382 0000 28	Forward plate LF 100 Honda L 500 mm (19.68 in.)
3382 0000 31	Forward plate LF 100 Honda LA 500 mm (19.68 in.)
3382 0000 27	Forward plate LF 100 Honda LAT 500 mm (19.68 in.)
3382 0000 30	Forward plate LF 100 Hatz L 500 mm (19.68 in.)
3382 0000 29	Forward plate LF 100 Hatz LAT 500 mm (19.68 in.)

Use only authorized parts. Any damage or malfunction caused by the use of unauthorized parts is not covered by Warranty or Product Liability.  
Any unauthorized use or copying of the contents or any part thereof is prohibited. This applies in particular to trademarks, model denominations, part numbers, and drawings.

### Instructions for use

This spare parts list contains no safety regulations and is merely intended to assist in the ordering of spare parts.

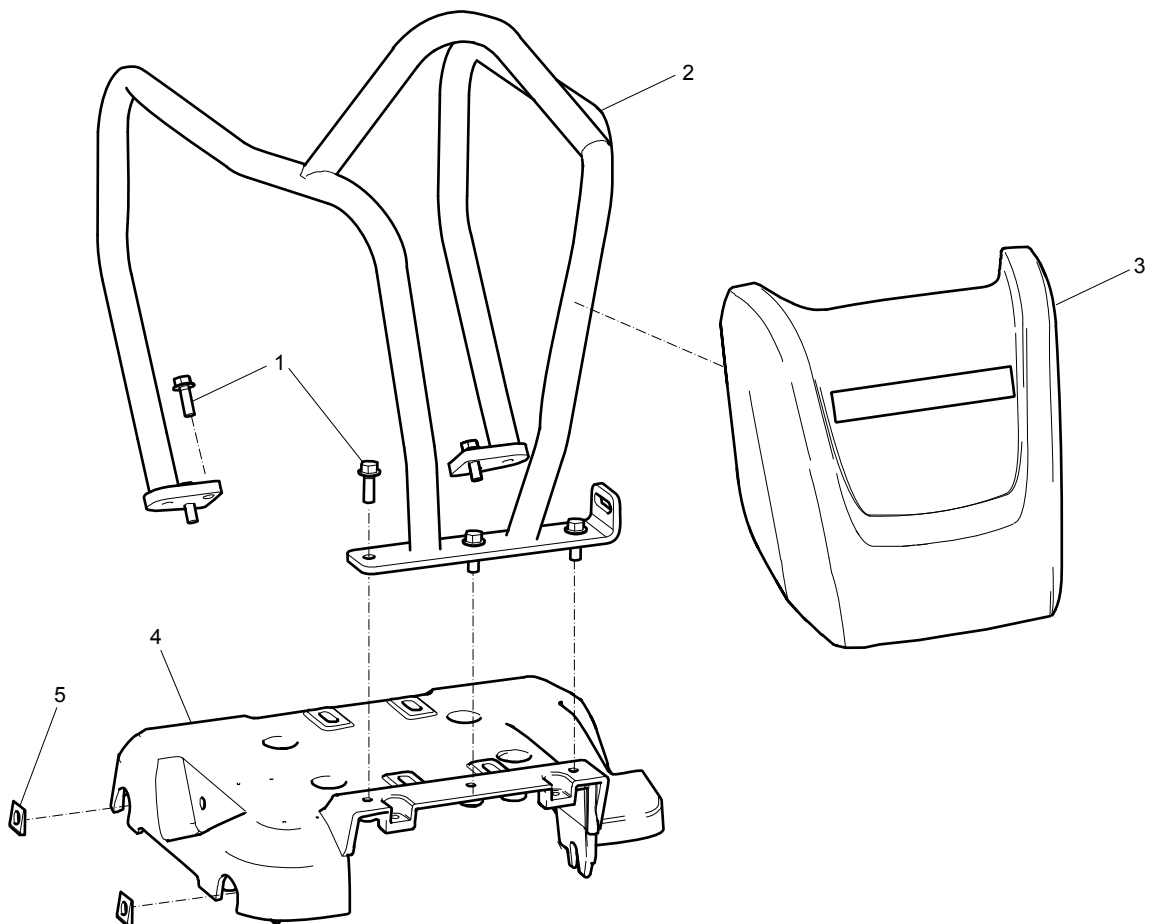
For information about operating, servicing, or repairing, the relevant Safety and operating instructions must be consulted at all costs.

Please observe the safety instructions listed in the relevant Safety and operating instructions!

## Spare parts list

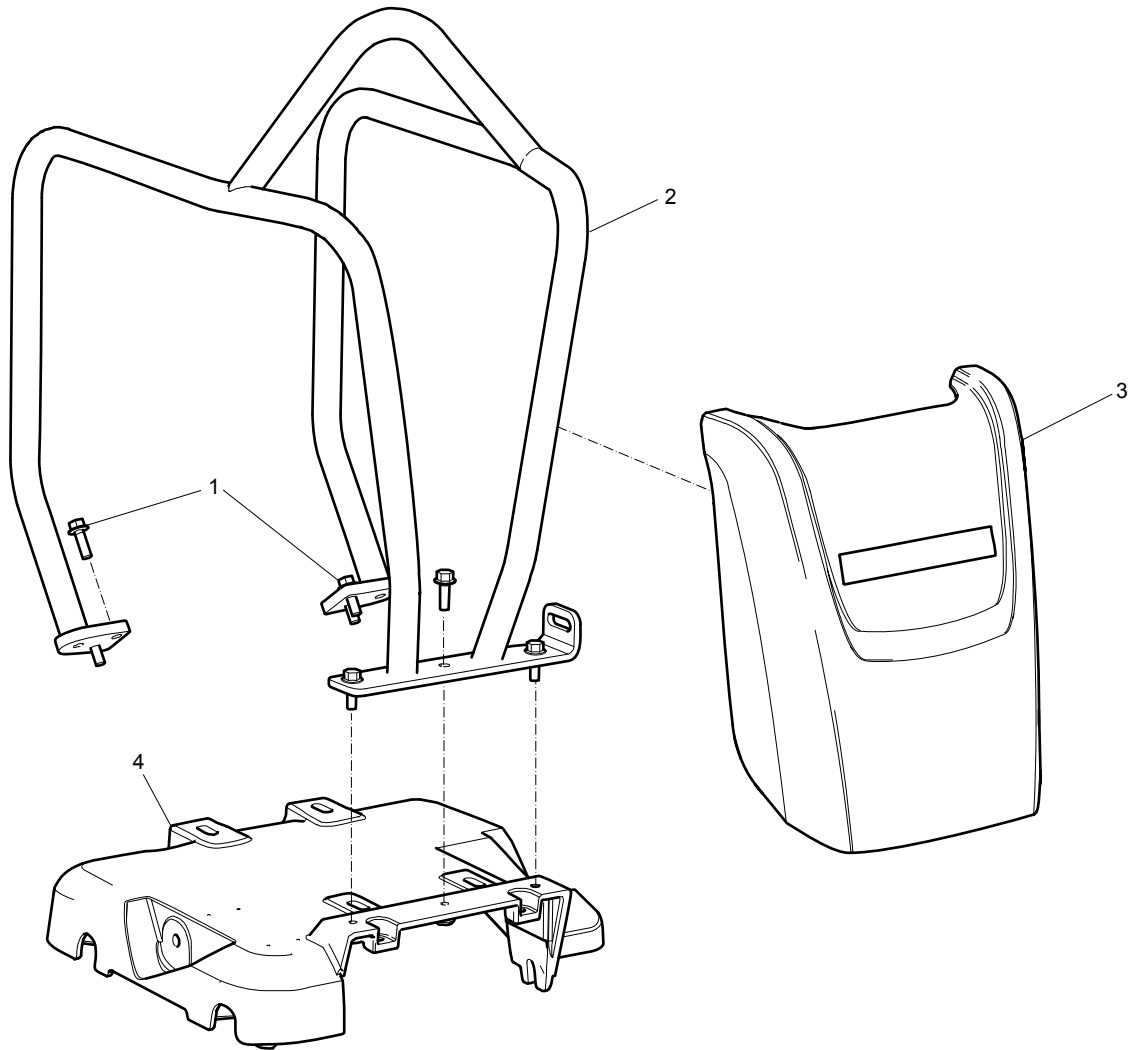
### Engine plate installation, Honda

---



No.	Description	Remark	Quantity	Part number
1	Screw	M8 x 25 mm 8.8 A2K	7	-
2	Protective frame		1	3382 0101 26
3	Cover		1	3382 0101 32
4	Engine plate		1	3382 0101 35
5	Square taper washer		2	4700 7927 25

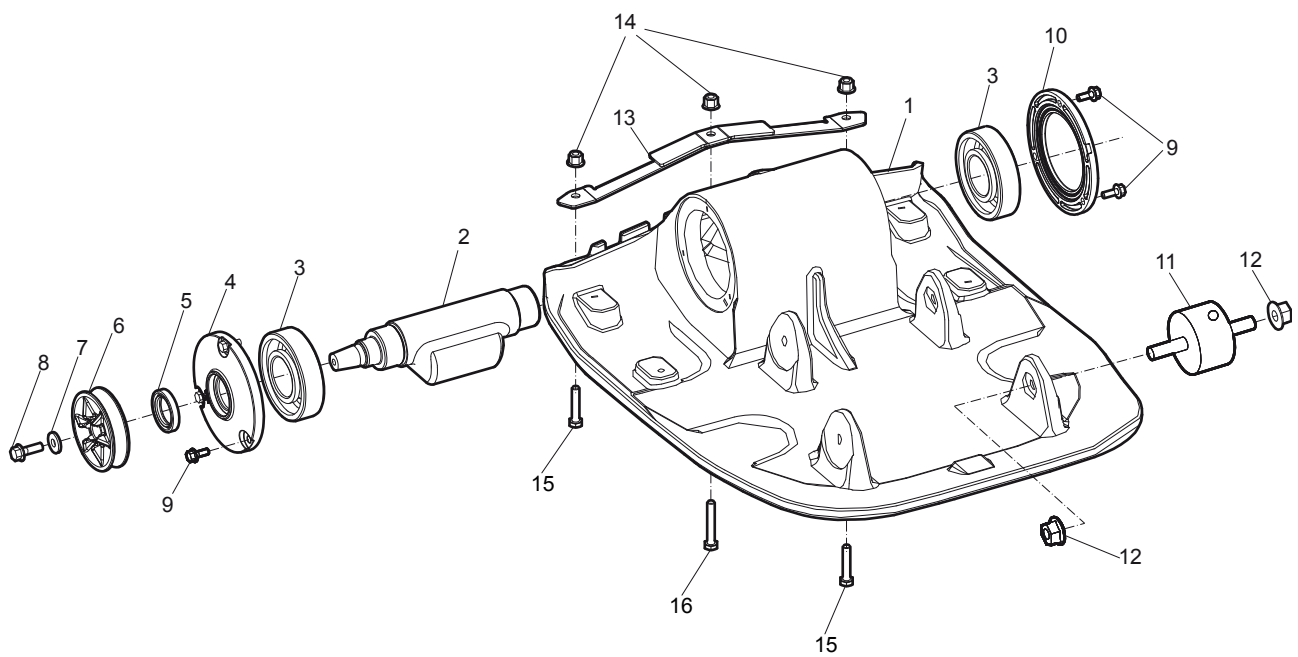
## Engine plate installation, Hatz





No.	Description	Remark	Quantity	Part number
1	Screw	M8 x 25 mm 8.8 A2K	7	4700 9020 41
2	Protective frame		1	3382 0101 27
3	Cover		1	3382 0101 33
4	Engine plate		1	3382 0101 36

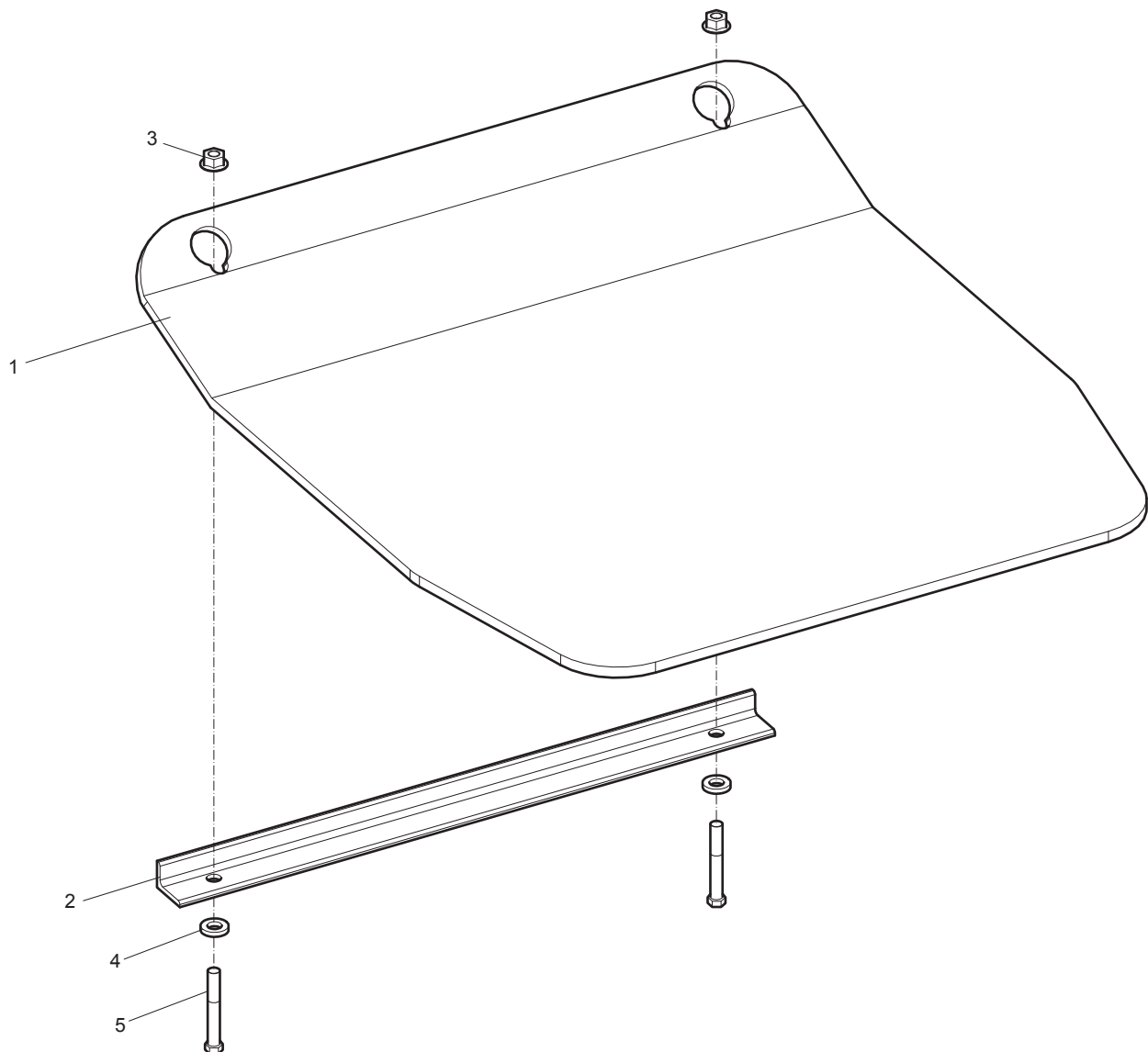
## Ground plate installation



No.	Description	Remark	Quantity	Part number
1	Ground plate	500 mm 19.7 in.	1	4812 0704 63
2	Eccentric shaft		1	4812 0700 59
3	Ball bearing		2	4700 7927 11
4	Cover		1	4700 3965 48
5	Lip-type oil seal		1	4700 1631 05
6	V-belt pulley		1	4700 3950 13
7	Washer	8.4 x 22 x 3 mm 300 HV 0.33 x 0.87 x 0.12 in. 300 HV	1	-
8	Screw	M8 x 25 mm 8.8 A2K	1	-
9	Screw	M6 x 16 mm 8.8 A2K	6	-
10	Cover		1	4700 3965 49
11	Shock absorber		4	4700 2823 73
12	Nut	M10 x 1.5 mm GEOMET®	8	-
13	Sprinkler bar	500 mm 19.7 in.	1	4812 0706 63
14	Lock nut	M8 x 1.25 mm A2K	3	-
15	Screw	M8 x 55 mm 8.8 A2K	2	-
16	Screw	M8 x 45 mm 8.8 A2K	1	-

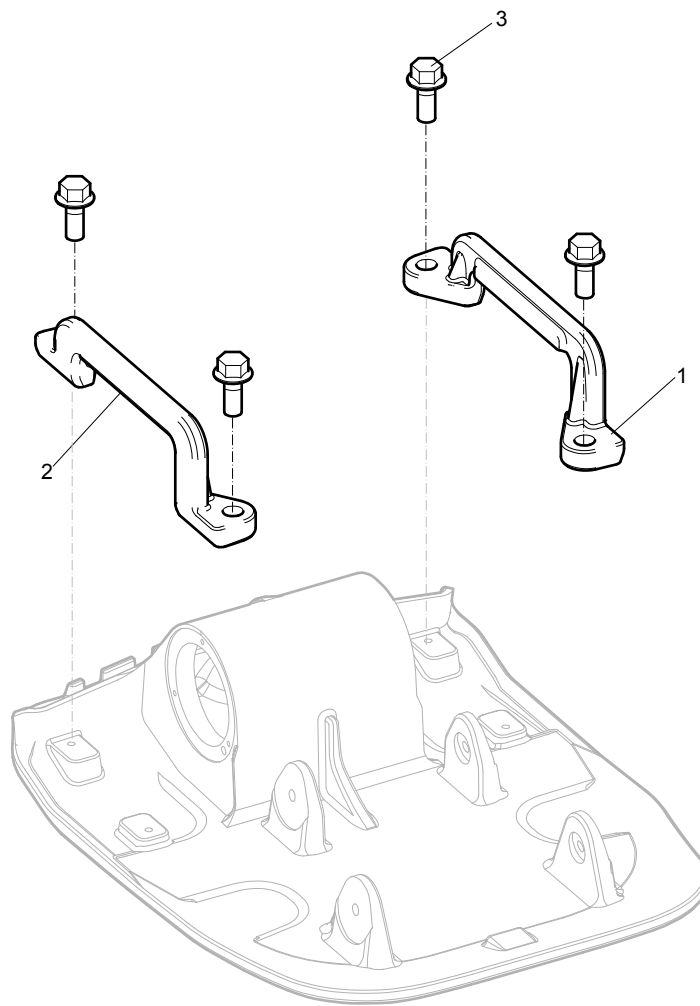
GEOMET is a registered trademark of Nof Metal Coatings North America Inc.

## Block paving plate 500 mm (19.7 in.)



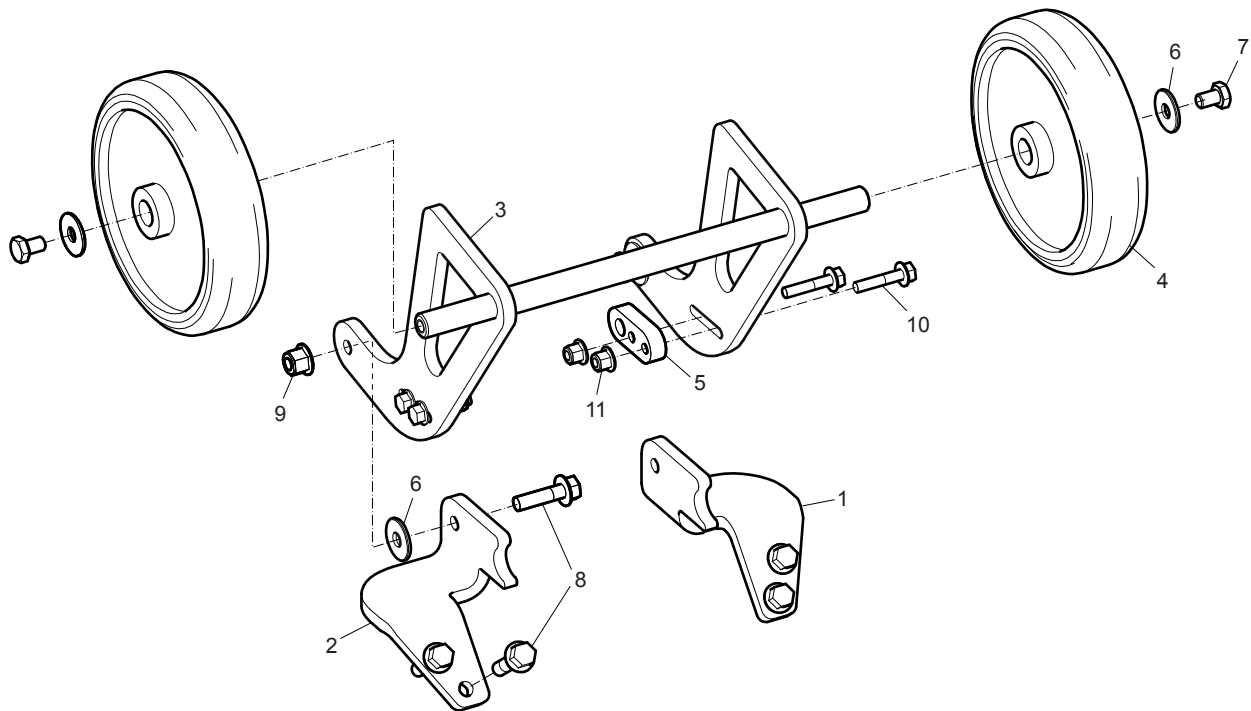
No.	Description	Remark	Quantity	Part number
1	Polyurethane plate	500 mm 19.7 in.	1	4700 3940 46
2	Bracket		1	4700 3940 47
3	Nut	M8 x 1.25 mm A2K	2	-
4	Washer	8.4 x 16 x 1.5 mm 300 HV 0.33 x 0.63 x 0.06 in. 300 HV	2	-
5	Screw	M8 x 75 mm 8.8	2	-

## Lifting handle



No.	Description	Remark	Quantity	Part number
1	Handle	Right	1	4700 3950 18
2	Handle	Left	1	4700 3950 20
3	Screw	M8 x 20 mm 8.8 A2K	4	-

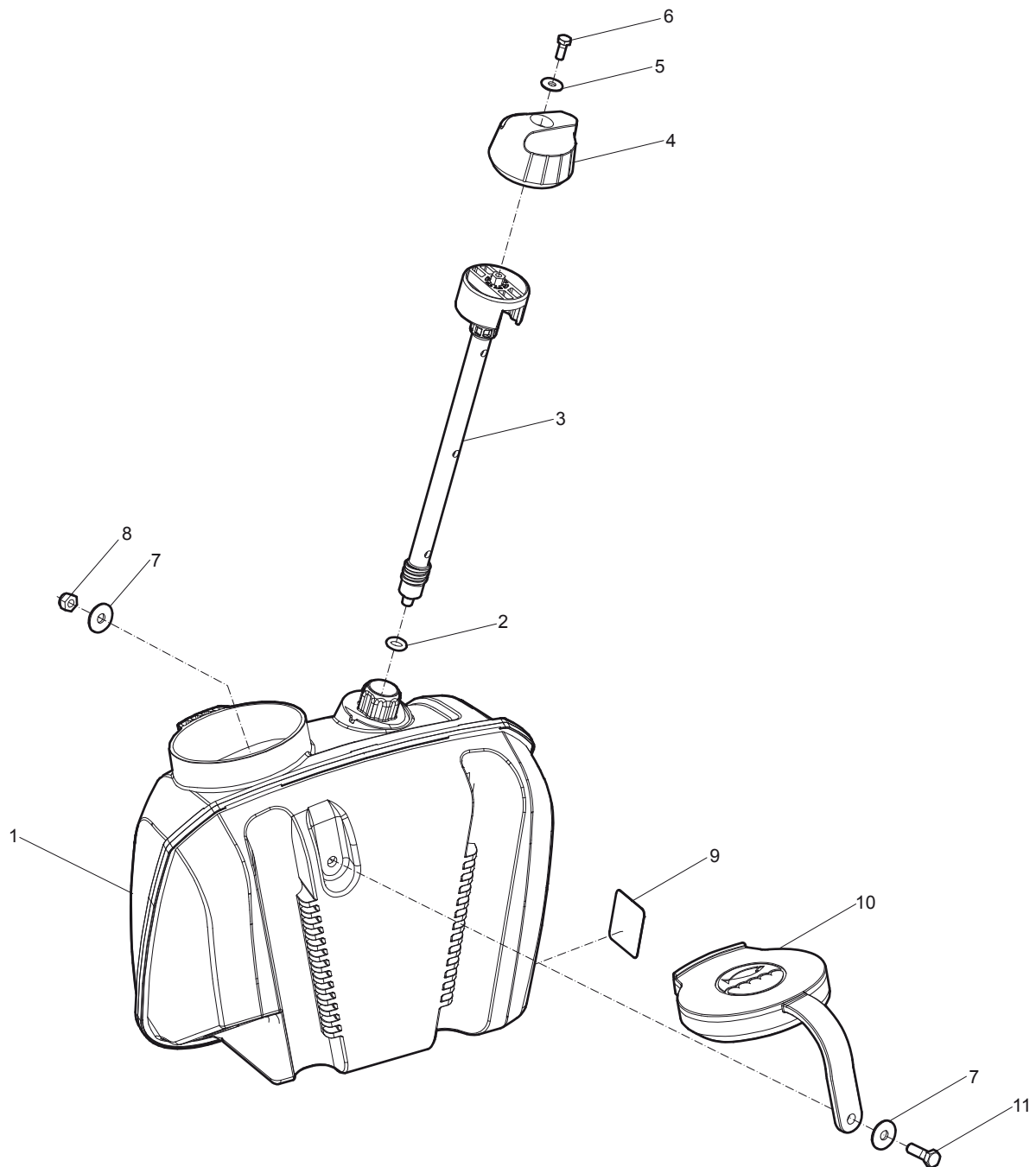
## Transport device





No.	Description	Remark	Quantity	Part number
1	Bracket	Left	1	3382 0101 39
2	Bracket	Right	1	3382 0101 40
3	Fork		1	3382 0101 41
4	Wheel		2	4700 3835 82
5	Lock		2	4700 3941 03
6	Washer	8.4 x 25 x 2 mm 0.33 x 0.98 x 0.08 in.	4	-
7	Screw	M8 x 12 mm 8.8 A2K	2	-
8	Screw	M8 x 30 mm 8.8 A2K	6	-
9	Lock nut	M8 x 1.25 mm A2K	2	-
10	Screw	M6 x 30 mm 8.8 A2K	4	-
11	Lock nut	M6 x 1 mm A2K	4	-

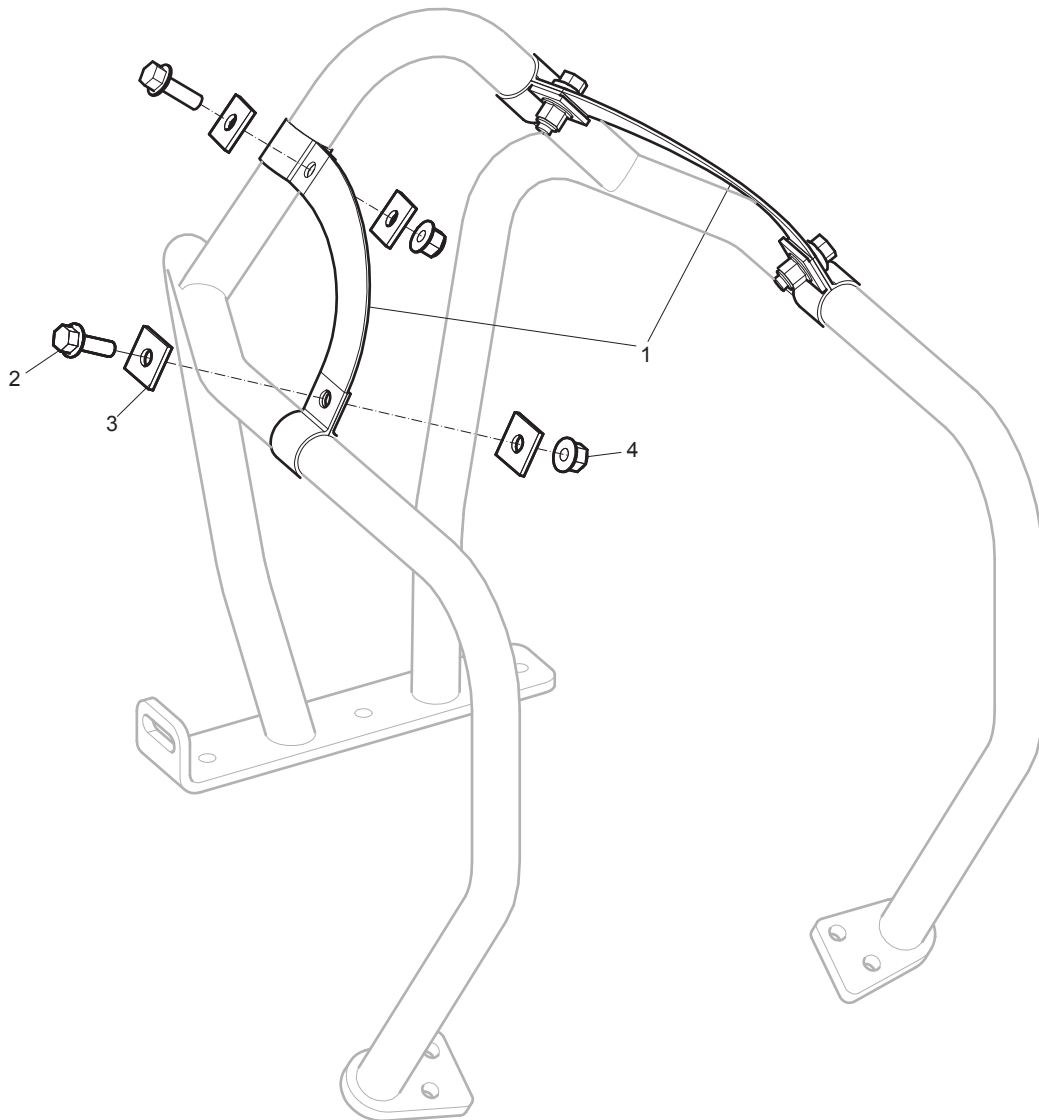
## Sprinkler system



No.	Description	Remark	Quantity	Part number
1	Water tank		1	3382 0101 25
2	O-ring	8 x 3 mm 0.31 x 0.12 in. (70 shore)	1	4700 7928 04
3	Valve rod		1	4700 3930 20
4	Handle		1	4700 3920 73
5	Washer	6.4 x 18 x 1.6 mm 0.25 x 0.71 x 0.06 in.	1	-
6	Screw	M6 x 16 mm 8.8 A2K	1	-
7	Washer	8.4 x 25 x 2 mm 0.33 x 0.98 x 0.08 in.	2	-
8	Lock nut	M8 -8 DIN 985	1	-
9	Label		1	4700 3933 81
10	Cap		1	4700 3920 92
11	Screw	M8 x 25 mm 8.8 A2K	1	-

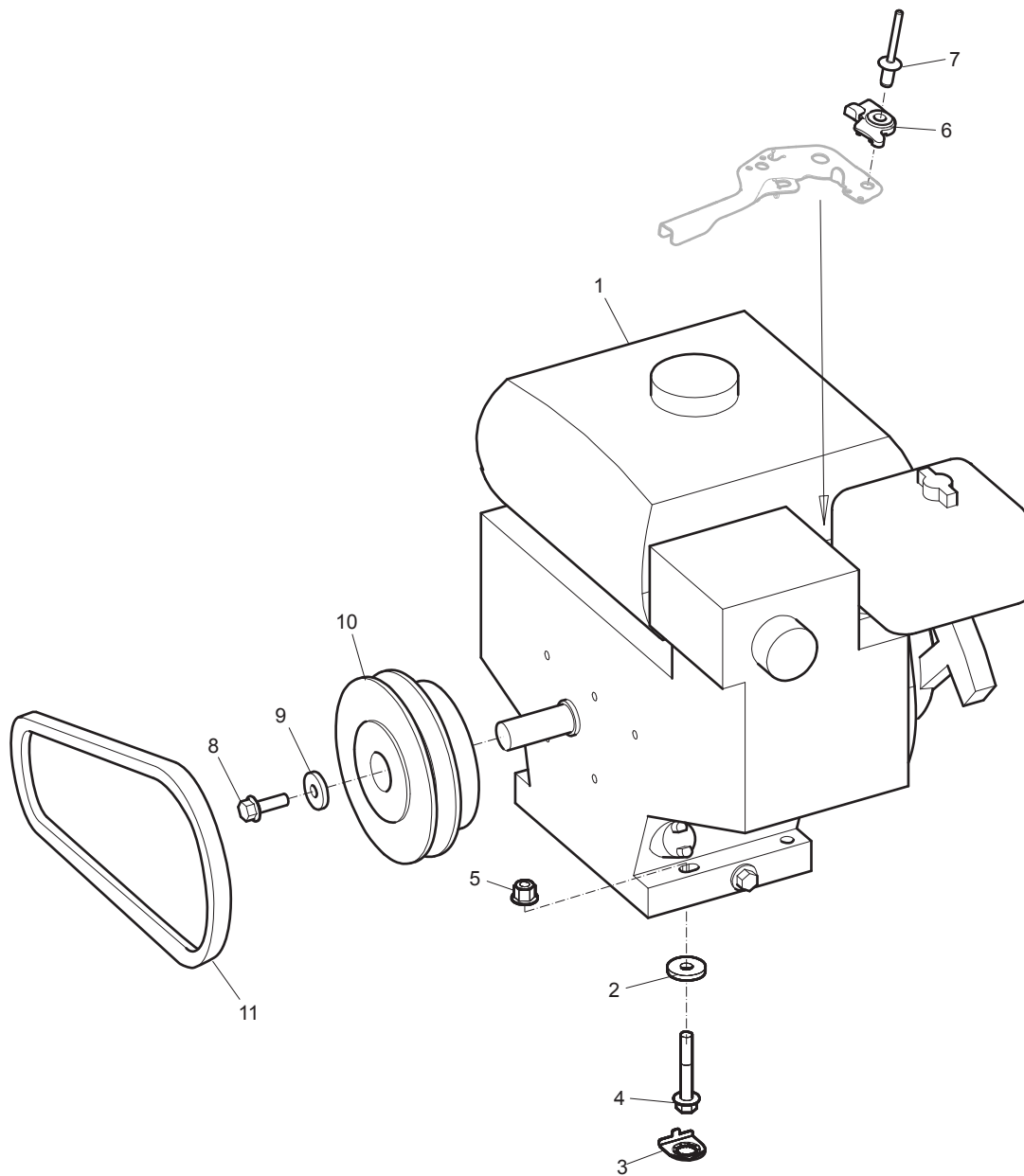
## Fork lifting device

---



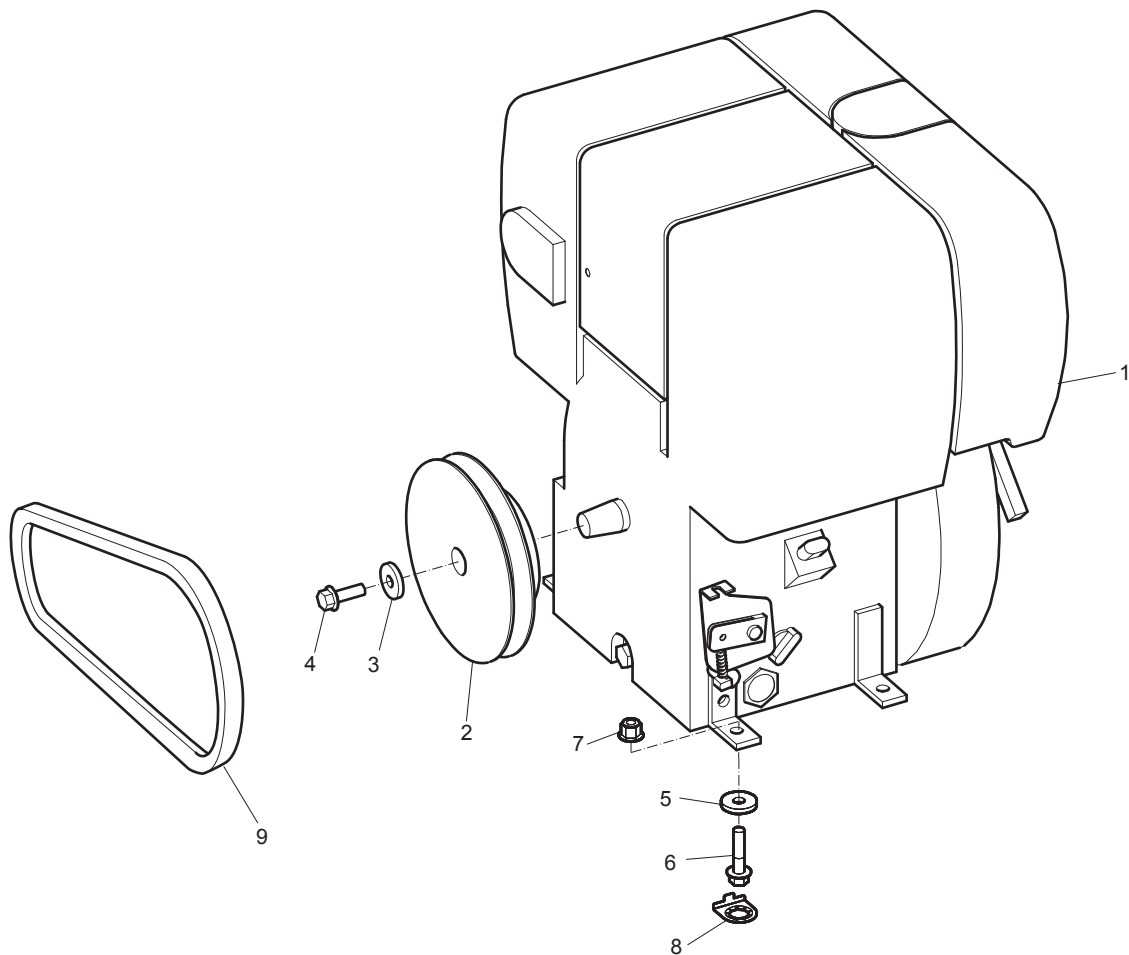
No.	Description	Remark	Quantity	Part number
1	Lifting eye		2	4700 3961 94
2	Screw	M8 x 25 mm 8.8 A2K	4	-
3	Washer	9 x 25 x 3 mm 0.35 x 0.98 x 0.12 in.	8	-
4	Lock nut	M8 x 1.25 mm A2K	4	-

## Engine installation, Honda



No.	Description	Remark	Quantity	Part number
1	Engine	Honda GX160T1 SXS4 OH	1	4700 2811 25
2	Washer	8.4 x 26 x 4 mm 300 HV 0.33 x 1.02 x 0.16 in. 300 HV	4	-
3	Washer		4	4700 3939 03
4	Screw	M8 x 50 mm 8.8 A2K	4	-
5	Lock nut	M8 x 1.25 mm A2K	4	-
6	Stiffener		1	4700 3961 26
7	Blind rivet	6.4 x 12 mm 0.25 x 0.47 in.	1	-
8	Screw	M8 x 25 mm 8.8 A2K	1	-
9	Washer	8.4 x 26 x 4 mm 300 HV 0.33 x 1.02 x 0.16 in. 300 HV	1	-
10	Centrifugal clutch		1	4700 3917 06
11	V-belt		1	4700 3956 58

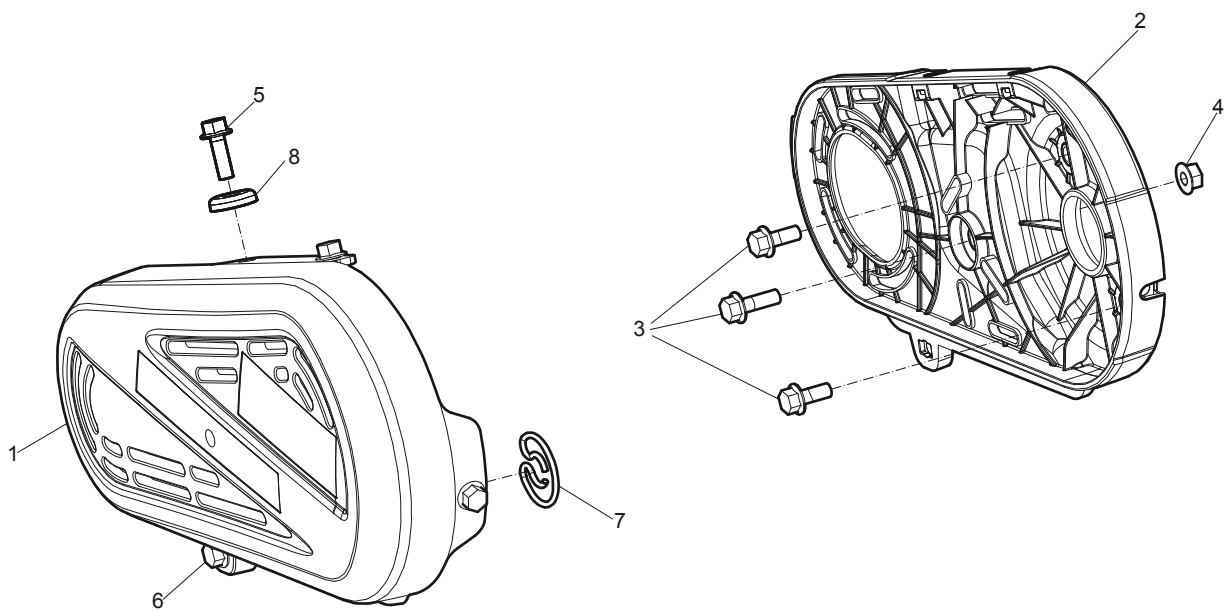
## Engine installation, Hatz





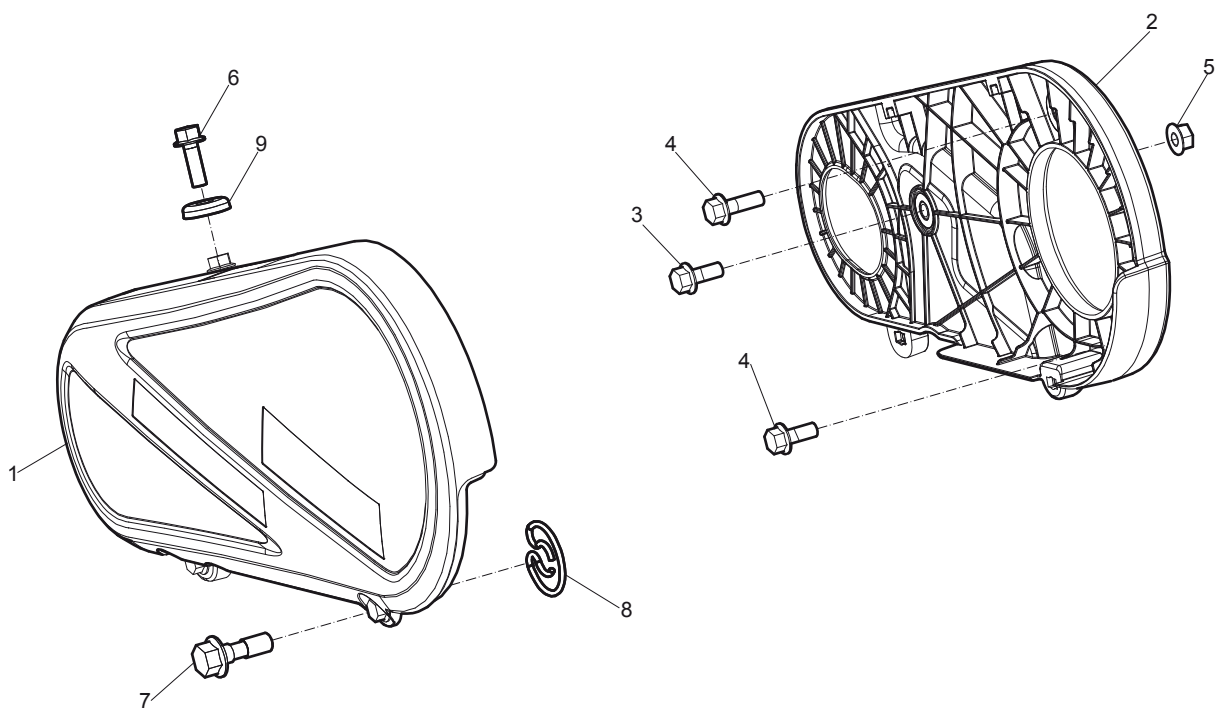
No.	Description	Remark	Quantity	Part number
1	Engine	Hatz 1B20	1	4700 3943 38
2	Centrifugal clutch		1	4700 3917 05
3	Washer	8.4 x 22 x 3 mm 300 HV 0.33 x 1.02 x 0.16 in. 300 HV	1	-
4	Screw	M8 x 25 mm 8.8 A2K	1	-
5	Washer	8.4 x 22 x 3 mm 300 HV 0.33 x 1.02 x 0.16 in. 300 HV	4	-
6	Screw	M8 x 35 mm 8.8 A2K	4	-
7	Lock nut	M8 x 1.25 mm A2K	4	-
8	Washer		4	4700 3939 03
9	V-belt		1	4700 3956 59

## Transmission cover, Honda



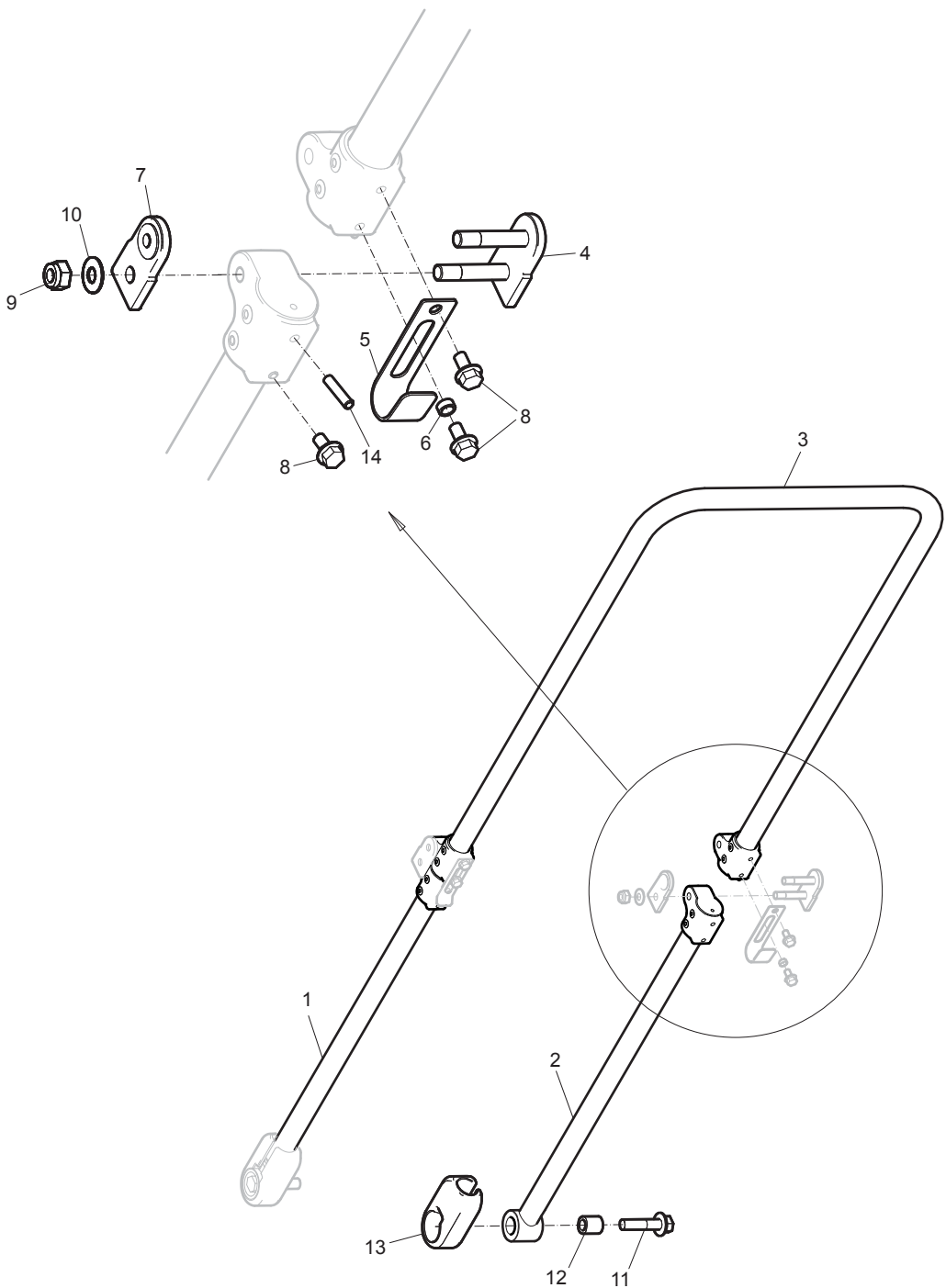
No.	Description	Remark	Quantity	Part number
1	Belt guard	Outer	1	3382 0101 30
2	Belt guard	Inner	1	4700 3933 25
3	Screw	M8 x 25 mm 8.8 A2K	3	-
4	Nut	M8 x 1.25 mm A2K	1	-
5	Screw	M8 x 30 mm 8.8 A2K	3	-
6	Screw		1	4812 0703 68
7	Lock spring		1	4812 0704 31
8	Washer		3	4812 0703 64

## Transmission cover, Hatz



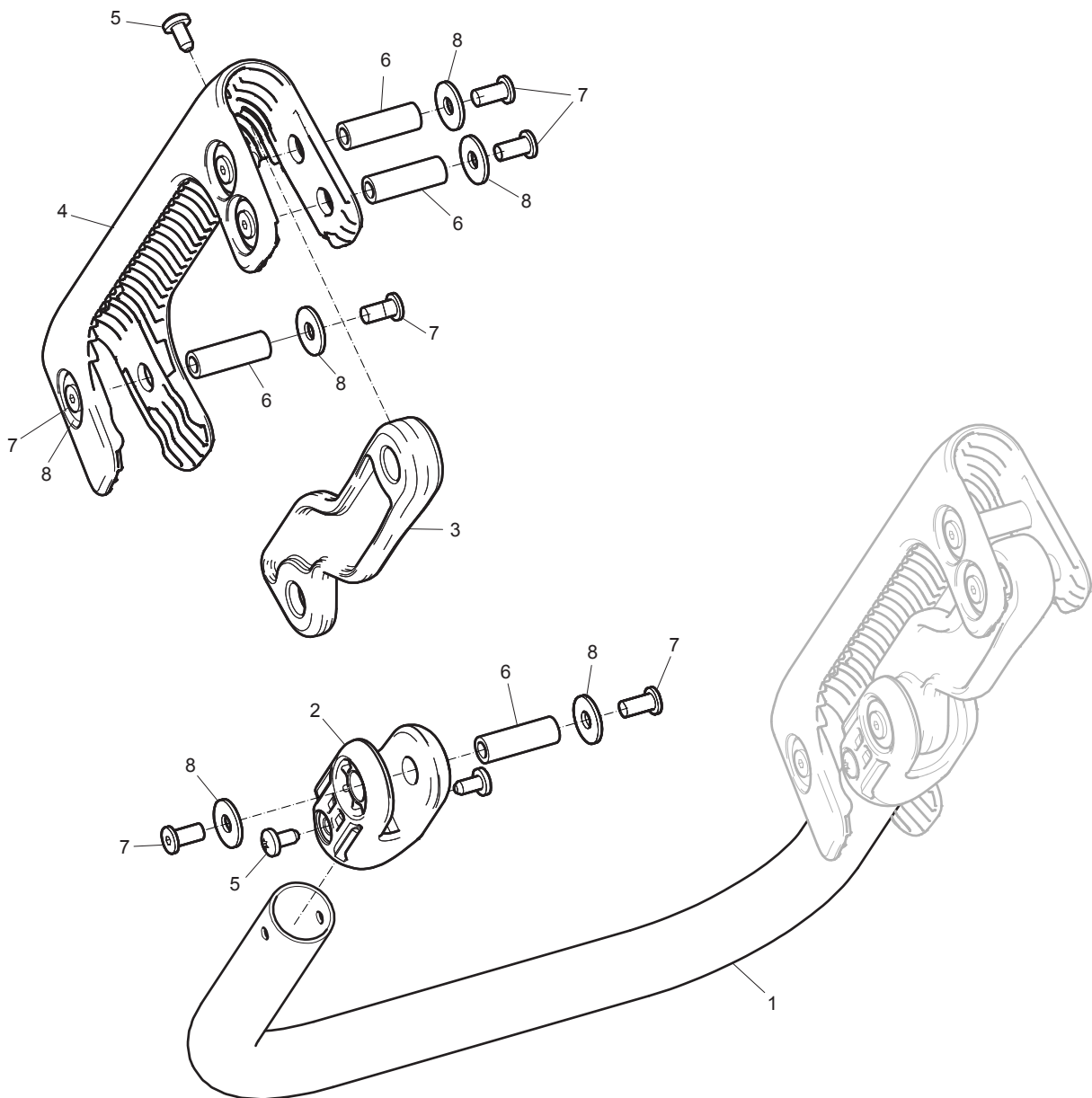
No.	Description	Remark	Quantity	Part number
1	Belt guard	Outer	1	3382 0101 31
2	Belt guard	Inner	1	4700 3933 25
3	Screw	M8 x 25 mm 8.8 A2K	1	-
4	Screw	M10 x 25 mm 8.8 A3K	2	-
5	Nut	M8 x 1.25 mm A2K	1	-
6	Screw	M8 x 30 mm 8.8 A2K	2	-
7	Screw		2	4812 0703 68
8	Lock spring		2	4812 0704 31
9	Washer		2	4812 0703 64

# Handle, standard



No.	Description	Remark	Quantity	Part number
1	Handle	Left	1	3382 0101 20
2	Handle	Right	1	3382 0101 21
3	Handle		1	3382 0101 22
4	Link		2	4700 3932 20
5	Cover		2	4700 3940 29
6	Spacer sleeve		2	4700 3941 45
7	Washer		2	4700 3942 28
8	Screw	M6 x 40 mm A2K	6	-
9	Lock nut	M8 -8 DIN 985	4	-
10	Disc spring	18 x 8.2 x 1 mm 0.71 x 0.32 x 0.04 in.	4	-
11	Screw	M12 x 50 mm 8.8 A3K	2	-
12	Sleeve bearing		2	4700 3918 21
13	Shock absorber		2	4700 3918 22
14	Spirol pin	5 x 25 mm 0.20 x 0.98 in.	2	-

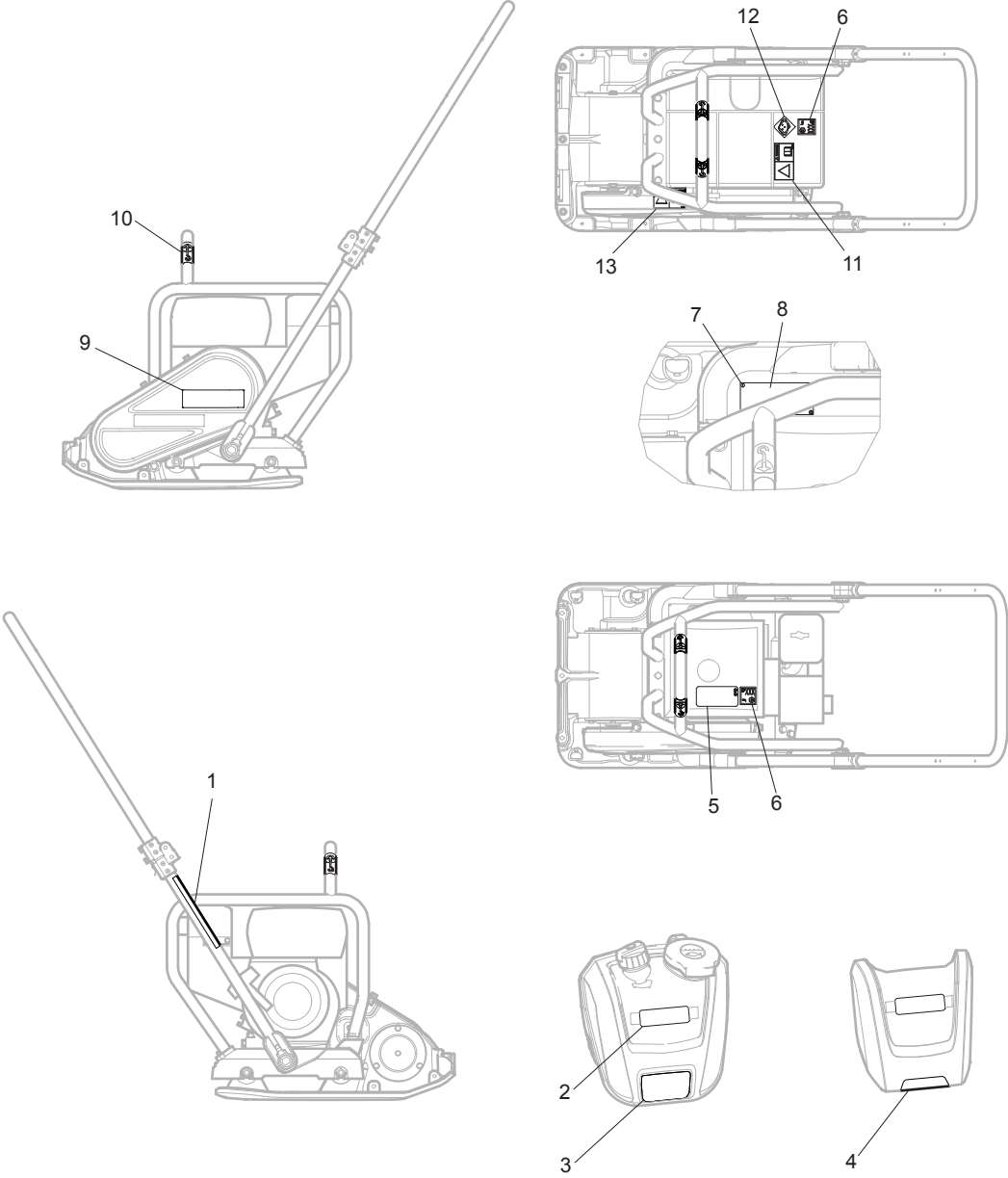
## Vibration damped handle





No.	Description	Remark	Quantity	Part number
1	Handle		1	4700 3918 26
2	Bracket		2	4700 3930 79
3	Shock absorber		2	4700 3918 24
4	Bracket		2	4700 3930 78
5	Screw	M5 x 10 mm A2K	8	-
6	Jointing nut	M6 x 30 mm 8.8	8	-
7	Screw	M6 x 12 mm 10.9 A2T	16	-
8	Washer	6.4 x 18 x 1.6 mm A2T 0.25 x 0.71 x 0.06 in. A2T	16	-

# Labels



No.	Description	Remark	Quantity	Part number
1	Label	Start instruction	1	4700 3947 04
2	Product label	"Atlas Copco"	2	3382 0100 40
3	Product label	"LF 100"	1	3382 0101 96
4	Product label	"LF 100"	1	3382 0101 92
5	Label	Assembly	1	4700 3947 08
6	Noise level label		1	4700 7912 92
7	Drive screw		4	-
8	Data plate		1	-
9	Product label	"LF 100"	1	3382 0101 88
10	Label	Lift point	1	4700 3575 87
11	Safety label	Read instruction manual	1	4700 9046 80
12	Label	Ear protection	1	4700 2818 98
13	Safety label	Rotating V-belts	1	4700 9038 32

## Kits

### One year service kit, Hatz

#### One year service kit

Part number 3382 1000 02

Description	Remark	Quantity	Part number
Air filter		5	4700 9370 13
Gasket	For oil drain plug.	1	4700 9370 03
V-belt	See section "Engine installation".	1	4700 3956 59
Starting rope		1	4700 9369 89
Fuel filter		5	4700 9396 18
Gasket	For valve cover.	1	4700 9397 68

### One year service kit, Honda

#### One year service kit

Part number 3382 1000 01

Description	Remark	Quantity	Part number
Air filter		5	4700 2393 23
Gasket	For oil dipstick.	1	4700 2383 03
V-belt	See section "Engine installation"	1	4700 3956 58
Starting rope		1	4700 2393 74
Spark plug		1	4700 9242 42
Gasket	For valve cover.	1	4700 2383 01

### Shock absorber repair kit, Hatz

Description	Remark	Quantity	Part number
<b>Shock absorber repair kit</b>		1	3382 1000 07
Shock absorber	For ground plate See section "Ground plate installation".	4	4700 2823 73
Nut	M10 A3K See section "Ground plate installation".	8	-
Shock absorber	For handle See section "Handle, standard".	2	4700 3918 22
Screw	M12 x 50 mm 8.8 A3K See section "Handle, standard".	2	-

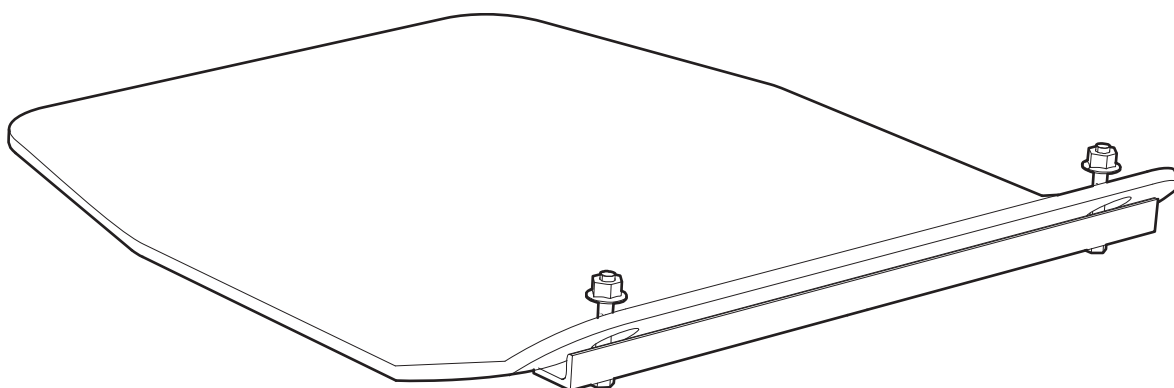
## Shock absorber repair kit, Honda

Description	Remark	Quantity	Part number
<b>Shock absorber repair kit</b>		1	3382 1000 06
Shock absorber	For ground plate See section "Ground plate installation".	4	4700 2823 73
Square taper washer	See section "Ground plate installation".	4	4700 7927 25
Nut	M10 A3K See section "Ground plate installation".	8	-
Shock absorber	For handle See section "Handle, standard".	2	4700 3918 22
Screw	M12 x 50 mm 8.8 A3K See section "Handle, standard".	2	-

## Eccentric element repair kit

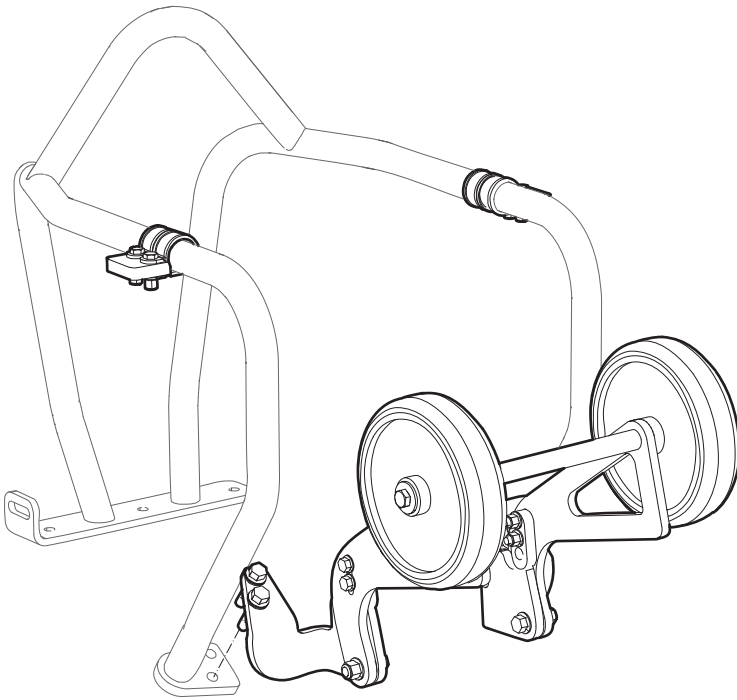
Description	Remark	Quantity	Part number
<b>Eccentric element repair kit</b>		1	3382 1000 04
Screw	M8 x 25 mm 8.8 A2K See section "Ground plate installation".	1	-
Washer	8.4 x 22 x 3 mm 0.33 x 0.87 x 0.12 in. HV300 See section "Ground plate installation".	1	-
Oil seal	See section "Ground plate installation".	1	4700 1631 05
Screw	M6 x 16 mm 8.8 A2K See section "Ground plate installation".	6	-
Bearing	See section "Ground plate installation".	2	4700 7927 11

## Block paving plate kit 500 mm (19.7 in.)



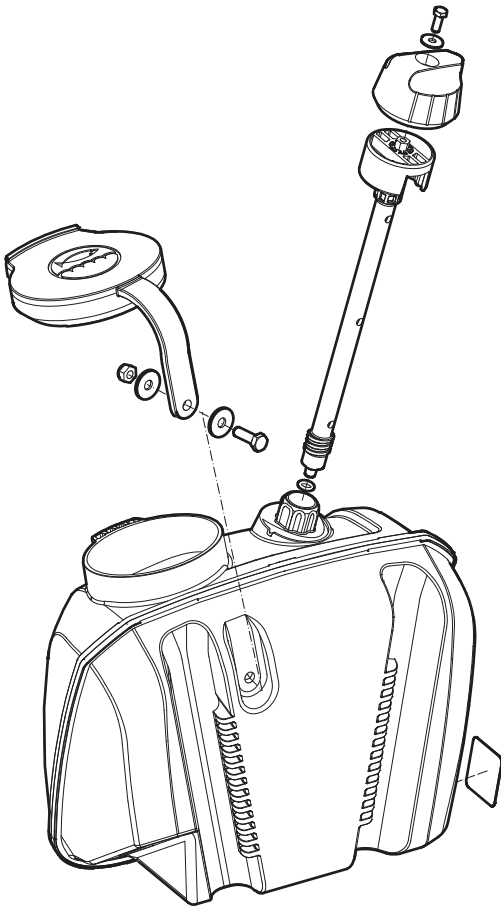
Description	Remark	Quantity	Part number
<b>Block paving plate kit</b>		1	4812 0701 72
Polyurethane plate	500 mm 19.7 in.	1	-
Bracket		1	-
Nut	M8 x 1.25 mm A2K	2	-
Washer	8.4 x 16 x 1.5 mm 0.33 x 0.63 x 0.06 in. 300 HV	2	-
Screw	M8 x 75 mm 8.8 A2K	2	-

## Transport device kit



Description	Remark	Quantity	Part number
<b>Transport device kit</b>		1	3382 0102 14
Wheel bracket	Left	1	-
Wheel bracket	Right	1	-
Wheel		2	-
Latch		2	-
Washer	8.4 x 25 x 2 mm 0.33 x 0.98 x 0.08 in.	4	-
Screw	M8 x 12 mm 8.8 A2K	2	-
Screw	M8 x 30 mm 8.8 A2K	2	-
Nut	M8 x 1.25 mm A2K	2	-
Screw	M8 x 20 mm 8.8 A2K	4	-
Nut	M6 x 1 mm A2K	8	-
Screw	M8 x 25 mm 8.8 A2K	4	-
Screw	M8 x 35 mm 8.8 A2K	4	-
Pipe clamp		4	-
Stop		2	-
Screw	M6 x 25 mm 8.8 A2K	4	-

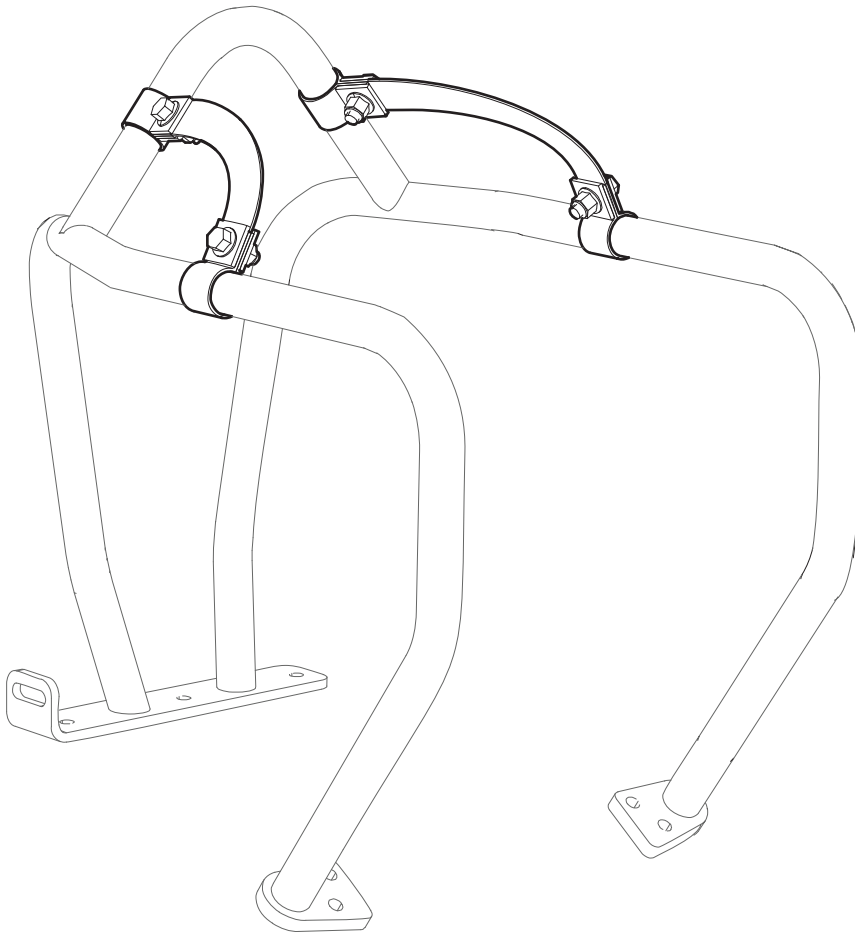
## Sprinkler system kit



Description	Remark	Quantity	Part number
<b>Sprinkler system kit</b>		1	3382 0102 15
Water tank		1	-
Rod		1	-
Handle		1	-
Washer	8.4 x 25 x 2 mm 0.33 x 0.98 x 0.08 in.	2	-
Screw	M8 x 25 mm 8.8 A2K	1	-
Nut	M8 -8 DIN985	1	-
Washer	6.4 x 18 x 1.6 mm 0.25 x 0.71 x 0.06 in.	1	-
Screw	M6 x 16 mm 8.8 A2K	1	-
Cap		1	-
Label		1	-
O-ring	8 x 3 mm 0.31 x 0.12 in. (70 shore)	1	-
Label		1	-

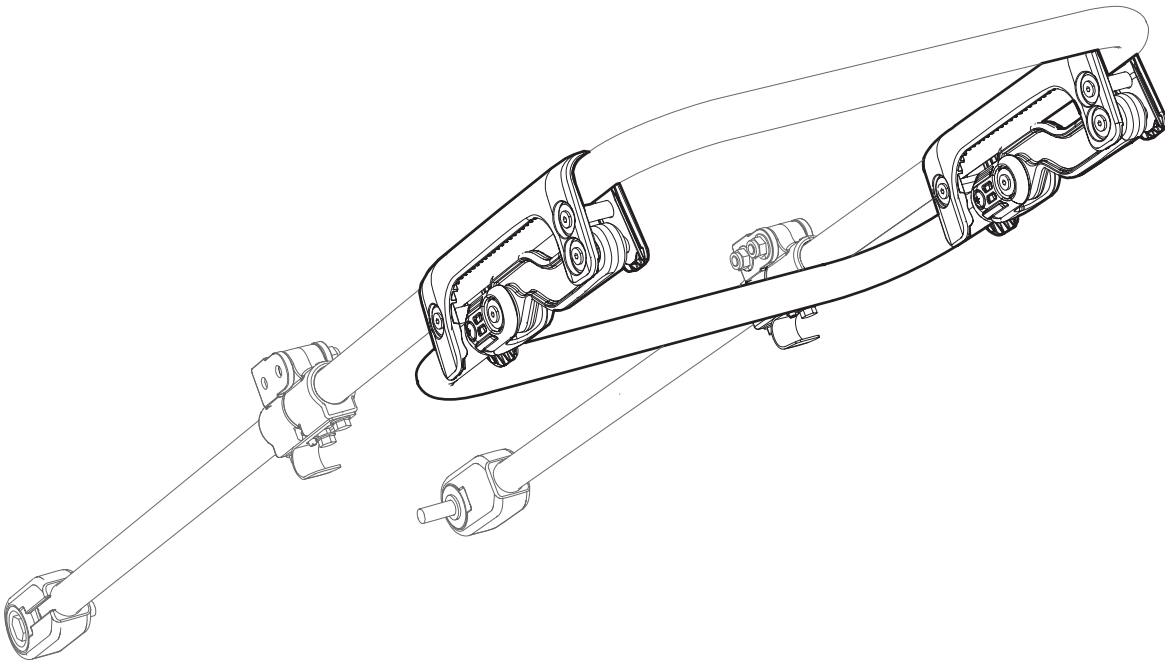


## Fork lifting device kit



Description	Remark	Quantity	Part number
<b>Fork lifting device kit</b>		1	4812 0701 73
Strap		1	-
Screw		4	-
Square washer	8.4 x 26 x 4 mm 0.33 x 1.02 x 0.16 in. 300 HV	8	-
Nut	M8 x 1.25 mm A2K	8	-

## Vibration damped handle kit



Description	Remark	Quantity	Part number
<b>Vibration damped handle kit</b>		1	4812 0701 57
Bracket		2	-
Nut	M6 x 30 mm 8.8	8	-
Screw	M6 x 12 mm 10.9 A2T	16	-
Shock abosorber		2	-
Bracket		2	-
Handle		1	-
Screw	M5 x 10 mm A2K	8	-
Washer	6.4 x 18 x 1.6 mm 0.25 x 0.71 x 0.06 in. A2T	16	-



