

Spare parts list

Forward plate

	Valid from serial number
LF 130 Honda LT 500 mm	27608531
LF 130 Hatz LT 500 mm	27608531



Contents

General information.....	5
Spare parts list.....	6
Engine plate installation, Honda.....	6
Engine plate installation, Hatz.....	8
Ground plate installation.....	10
Block paving plate 500 mm (19.7 in.).....	12
Transport device.....	14
Fork lifting device.....	16
Engine installation, Honda.....	18
Engine installation, Hatz.....	20
Transmission cover, Honda.....	22
Transmission cover, Hatz.....	24
Handle, standard.....	26
Vibration damped handle.....	28
Labels.....	30
Kits.....	32
One year service kit, Honda.....	32
One year service kit, Hatz.....	32
Shock absorber repair kit.....	32
Eccentric element repair kit.....	33
Block paving plate kit 500 mm (19.7 in.).....	33
Transport device kit.....	34
Fork lifting device kit.....	35
Vibration damped handle kit.....	36

General information

This spare parts list applies to the following:

Part number	Description
3382 0000 34	Forward plate LF 130 Honda LT 500 mm (19.68 in.)
3382 0000 35	Forward plate LF 130 Hatz LT 500 mm (19.68 in.)

Use only authorized parts. Any damage or malfunction caused by the use of unauthorized parts is not covered by Warranty or Product Liability. Any unauthorized use or copying of the contents or any part thereof is prohibited. This applies in particular to trademarks, model denominations, part numbers, and drawings.

Instructions for use

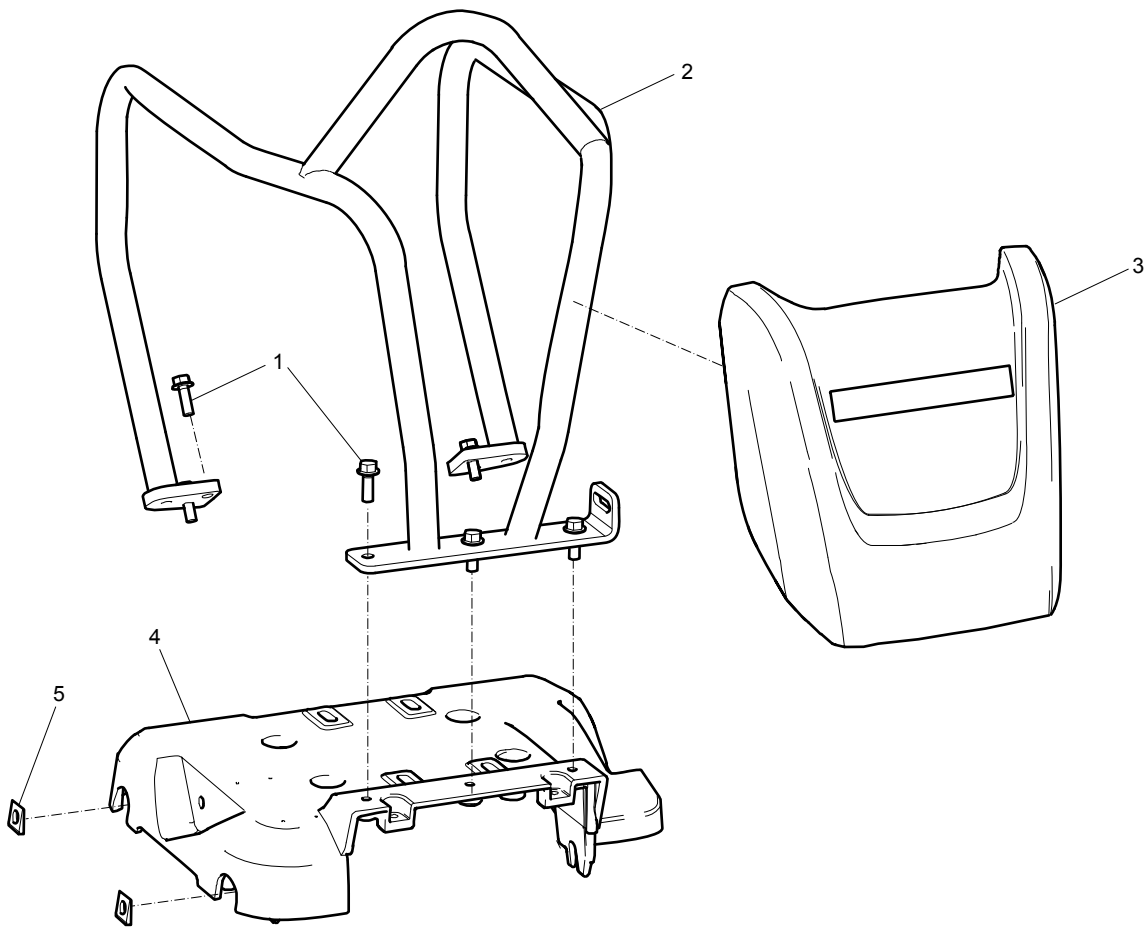
This spare parts list contains no safety regulations and is merely intended to assist in the ordering of spare parts.

For information about operating, servicing, or repairing, the relevant Safety and operating instructions must be consulted at all costs.

Please observe the safety instructions listed in the relevant Safety and operating instructions!

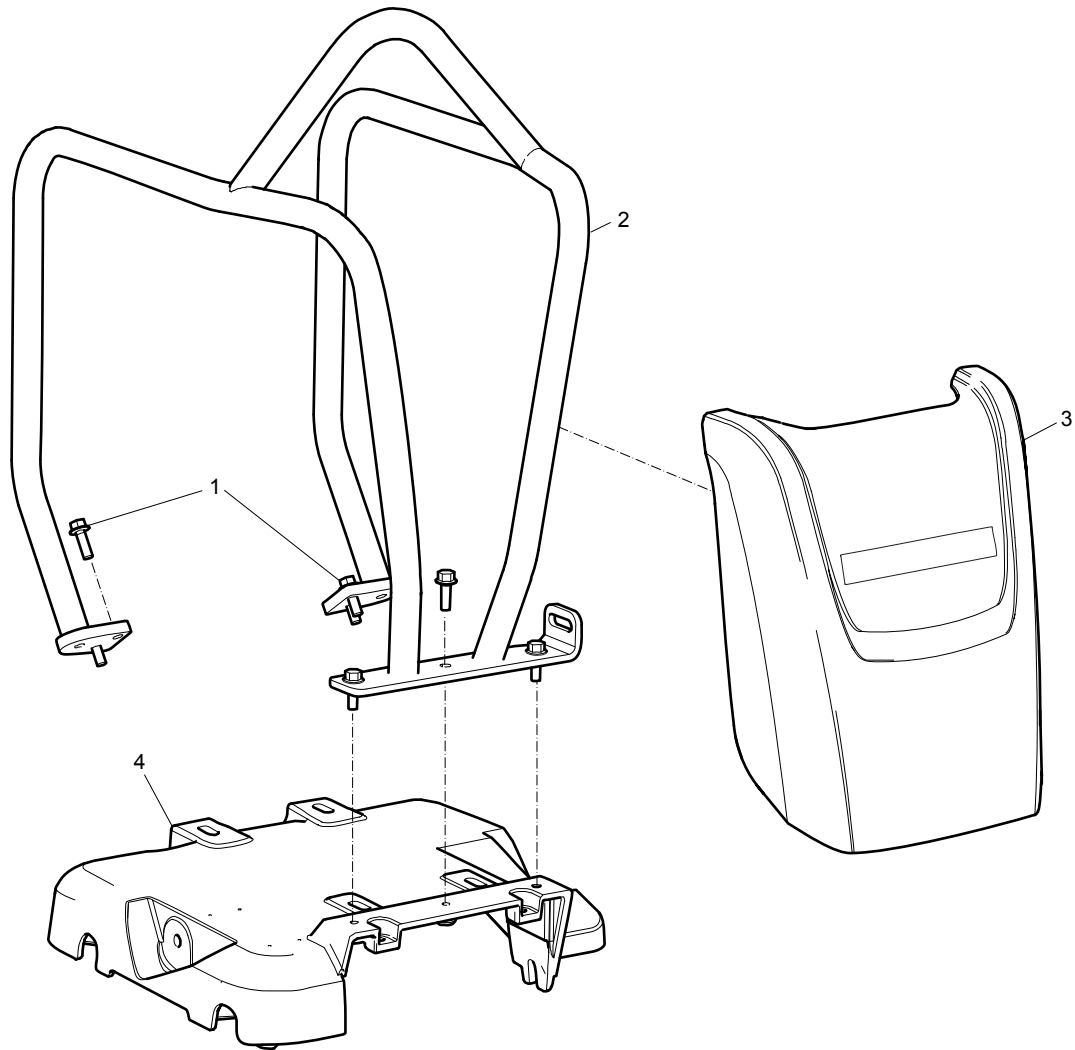
Spare parts list

Engine plate installation, Honda



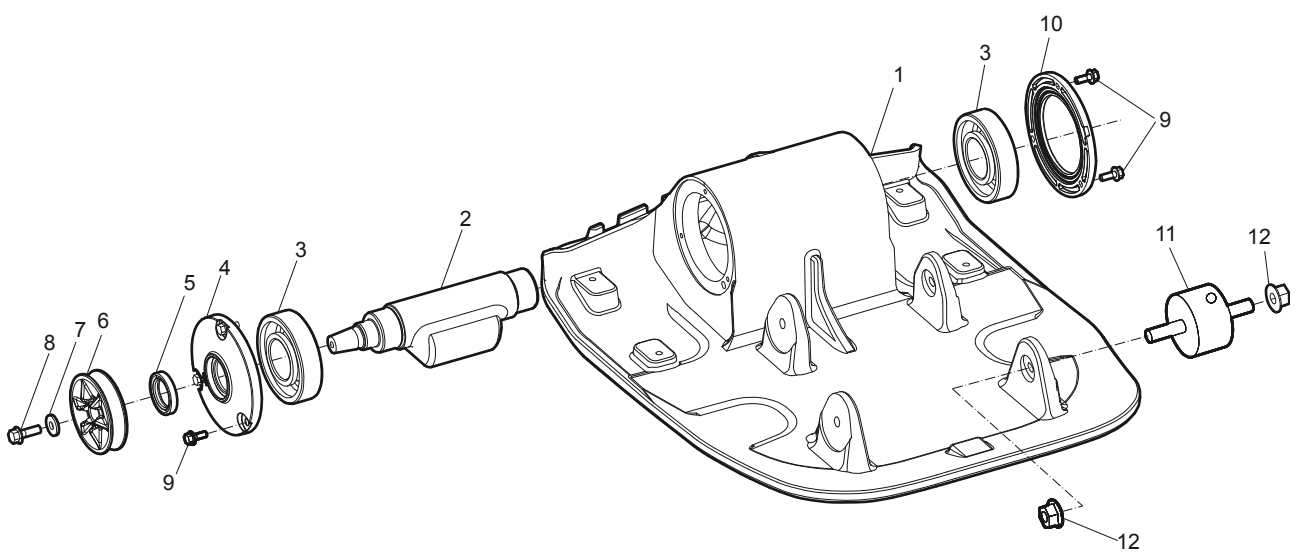
No.	Description	Remark	Quantity	Part number
1	Screw	M8 x 25 mm 8.8 A2K	7	-
2	Protective frame		1	3382 0101 26
3	Cover		1	3382 0101 32
4	Engine plate		1	3382 0101 37
5	Square taper washer		2	4700 7927 25

Engine plate installation, Hatz



No.	Description	Remark	Quantity	Part number
1	Screw	M8 x 25 mm 8.8 A2K	7	-
2	Protective frame		1	3382 0101 27
3	Cover		1	3382 0101 33
4	Engine plate		1	3382 0101 38

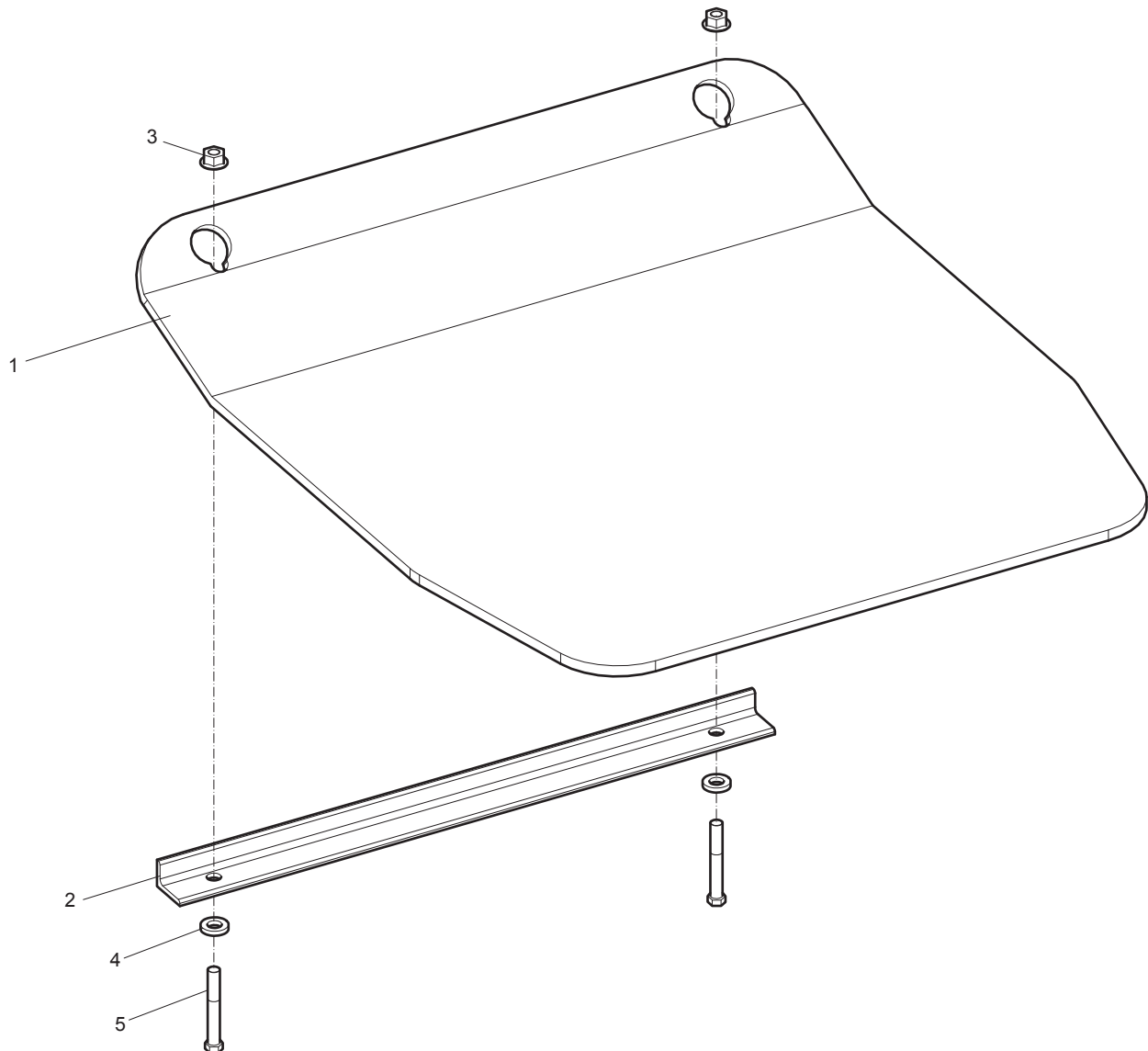
Ground plate installation



No.	Description	Remark	Quantity	Part number
1	Ground plate		1	3382 0101 48
2	Eccentric shaft		1	4812 0700 61
3	Ball bearing		2	4700 7927 11
4	Cover, left side		1	4700 3965 48
5	Lip-type oil seal		1	4700 1631 05
6	V-belt pulley		1	4700 3950 13
7	Washer	8.4 x 22 x 3 mm 0.33 x 0.87 x 0.12 in. HV300	1	4700 9046 40
8	Screw	M8 x 25 mm 8.8 A2K	1	4700 9020 41
9	Screw	M6 x 16 mm 8.8 A2K	6	-
10	Cover, right side		1	4700 3965 49
11	Shock absorber		4	4700 2823 73
12	Nut	M10 x 1.5 mm GEOMET®	8	-

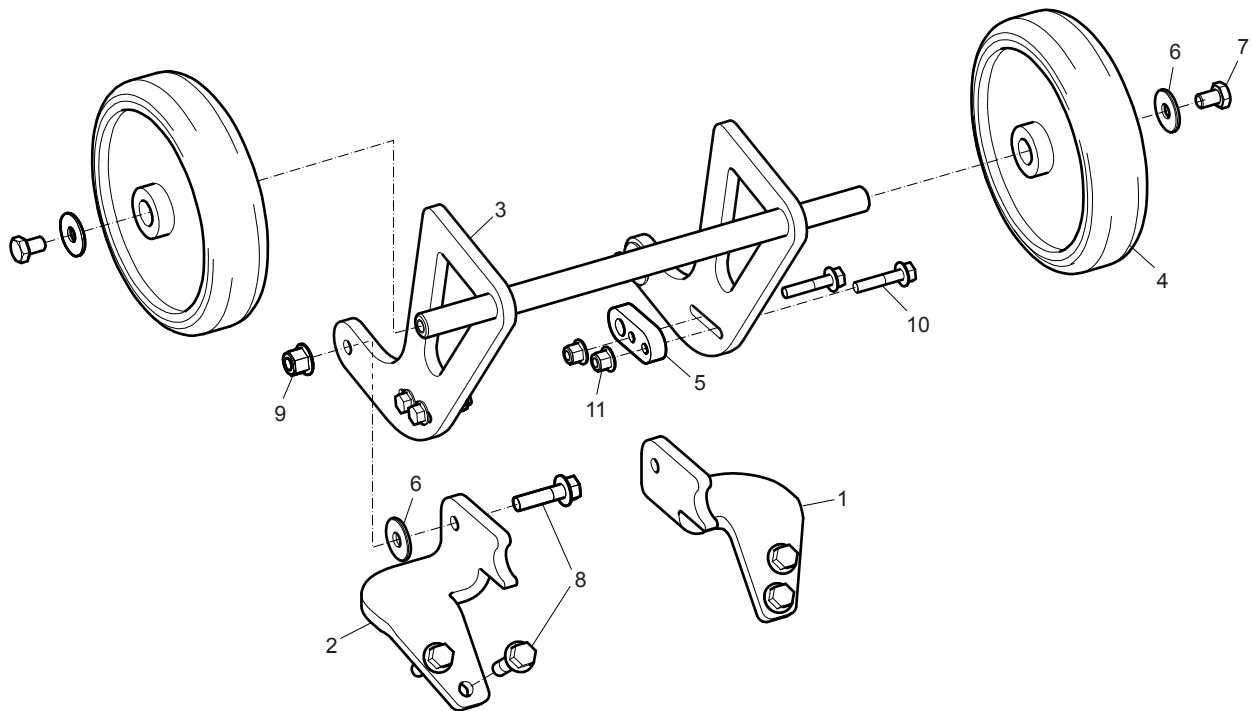
GEOMET is a registered trademark of Nof Metal Coatings North America Inc.

Block paving plate 500 mm (19.7 in.)



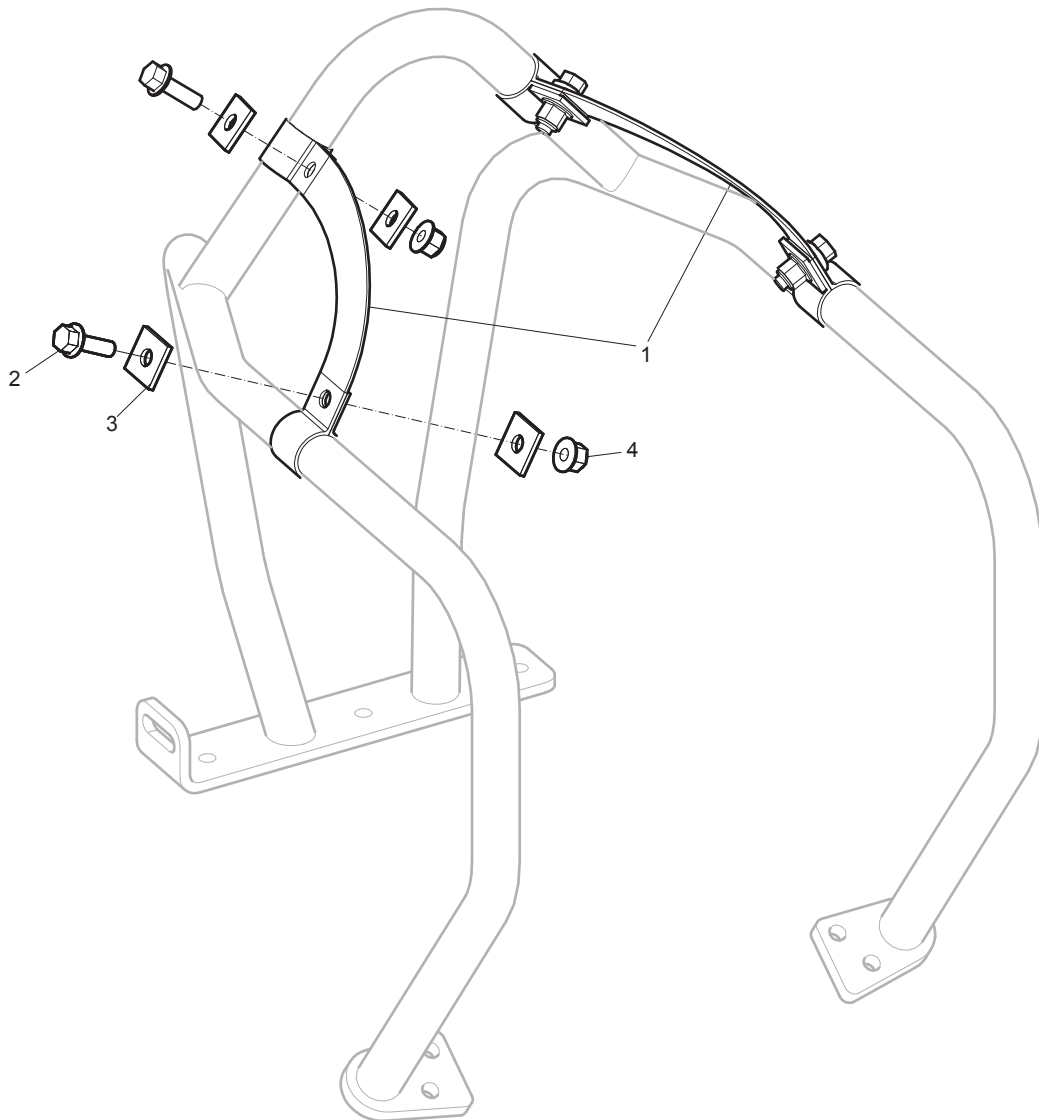
No.	Description	Remark	Quantity	Part number
1	Polyurethane plate	500 mm 19.7 in.	1	4700 3940 46
2	Bracket		1	4700 3940 47
3	Nut	M8 x 1.25 mm A2K	2	-
4	Washer	8.4 x 16 x 1.5 mm 300 HV 0.33 x 0.63 x 0.06 in. 300 HV	2	-
5	Screw	M8 x 75 mm 8.8	2	-

Transport device



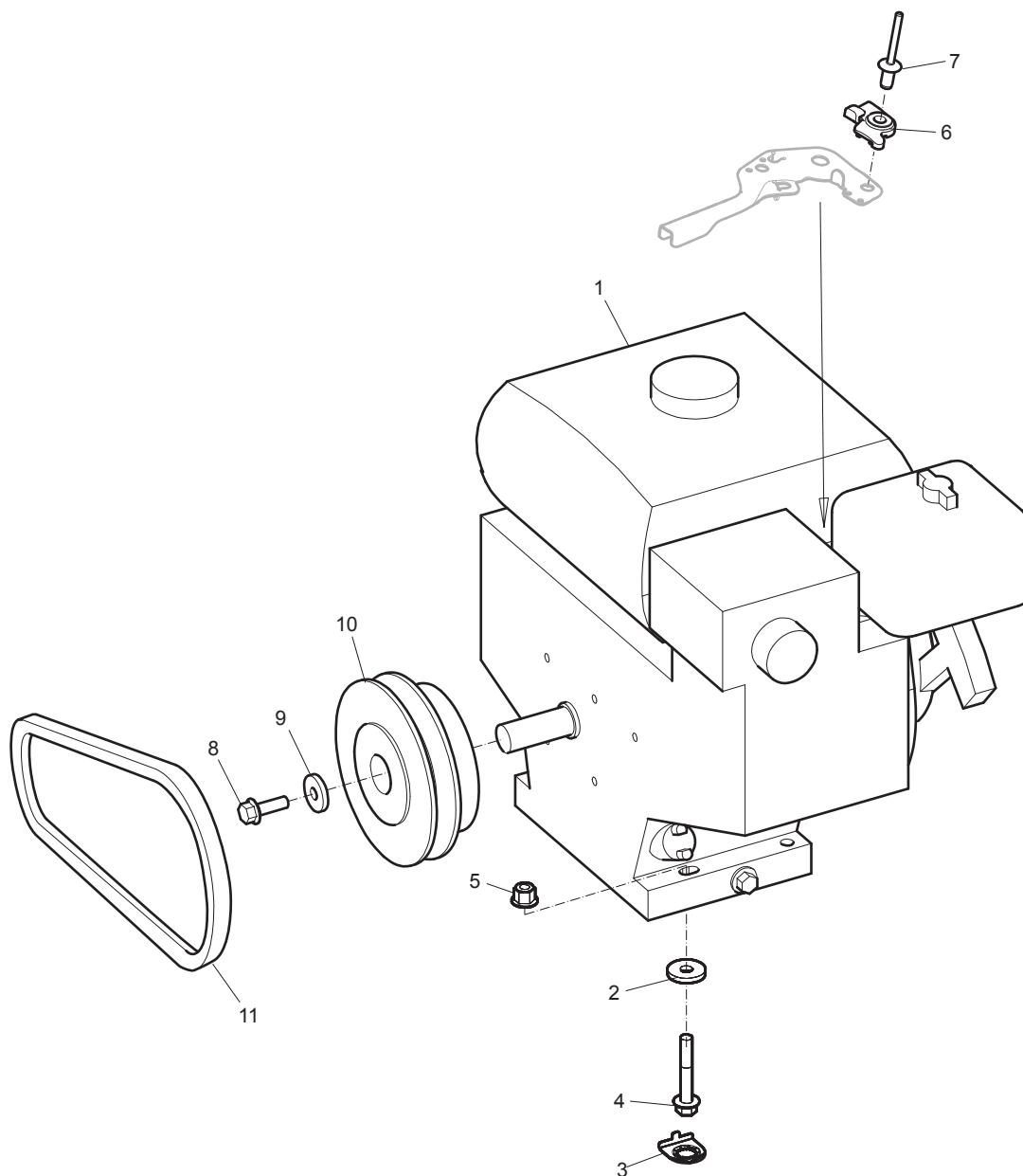
No.	Description	Remark	Quantity	Part number
1	Bracket	Left	1	3382 0101 39
2	Bracket	Right	1	3382 0101 40
3	Fork		1	3382 0101 41
4	Wheel		2	4700 3835 82
5	Lock		2	4700 3941 03
6	Washer	8.4 x 25 x 2 mm 0.33 x 0.98 x 0.08 in.	4	-
7	Screw	M8 x 12 mm 8.8 A2K	2	-
8	Screw	M8 x 30 mm 8.8 A2K	6	-
9	Lock nut	M8 x 1.25 mm A2K	2	-
10	Screw	M6 x 30 mm 8.8 A2K	4	-
11	Lock nut	M6 x 1 mm A2K	4	-

Fork lifting device



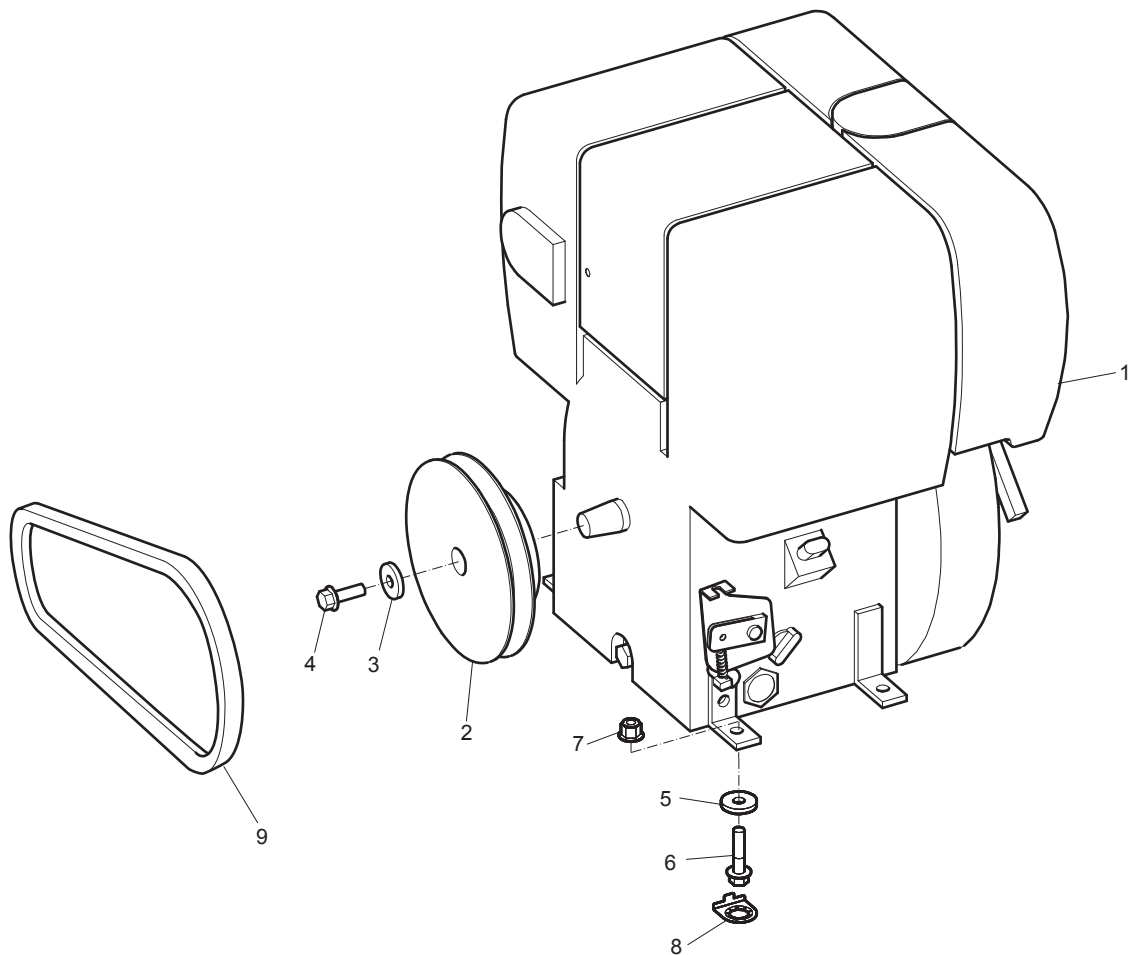
No.	Description	Remark	Quantity	Part number
1	Lifting eye		2	4700 3961 94
2	Screw	M8 x 25 mm 8.8 A2K	4	-
3	Washer	9 x 25 x 3 mm 0.35 x 0.98 x 0.12 in.	8	-
4	Lock nut	M8 x 1.25 mm A2K	4	-

Engine installation, Honda



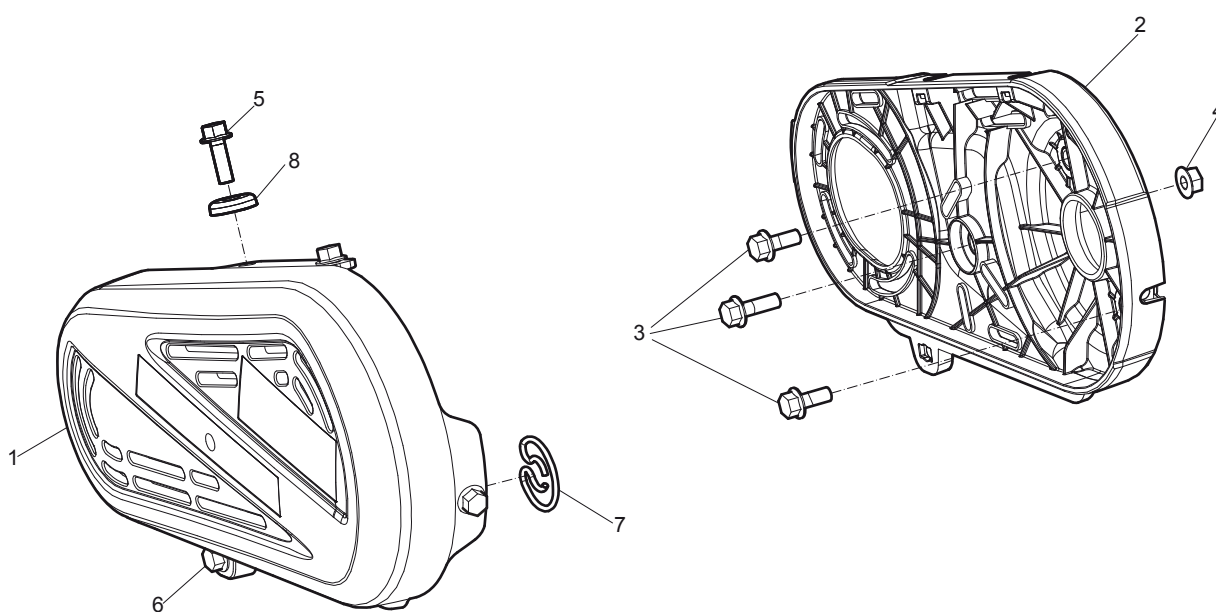
No.	Description	Remark	Quantity	Part number
1	Engine	Honda GX160T1 SXS4 OH	1	4700 2811 25
2	Washer	8.4 x 26 x 4 mm 300 HV 0.33 x 1.02 x 0.16 in. 300 HV	4	-
3	Washer		4	4700 3939 03
4	Screw	M8 x 50 mm 8.8 A2K	4	-
5	Lock nut	M8 x 1.25 mm A2K	4	-
6	Stiffener		1	4700 3961 26
7	Blind rivet	6.4 x 12 mm 0.25 x 0.47 in.	1	-
8	Screw	M8 x 25 mm 8.8 A2K	1	-
9	Washer	8.4 x 26 x 4 mm 300 HV 0.33 x 1.02 x 0.16 in. 300 HV	1	-
10	Centrifugal clutch		1	4700 3917 06
11	V-belt		1	4700 3956 58

Engine installation, Hatz



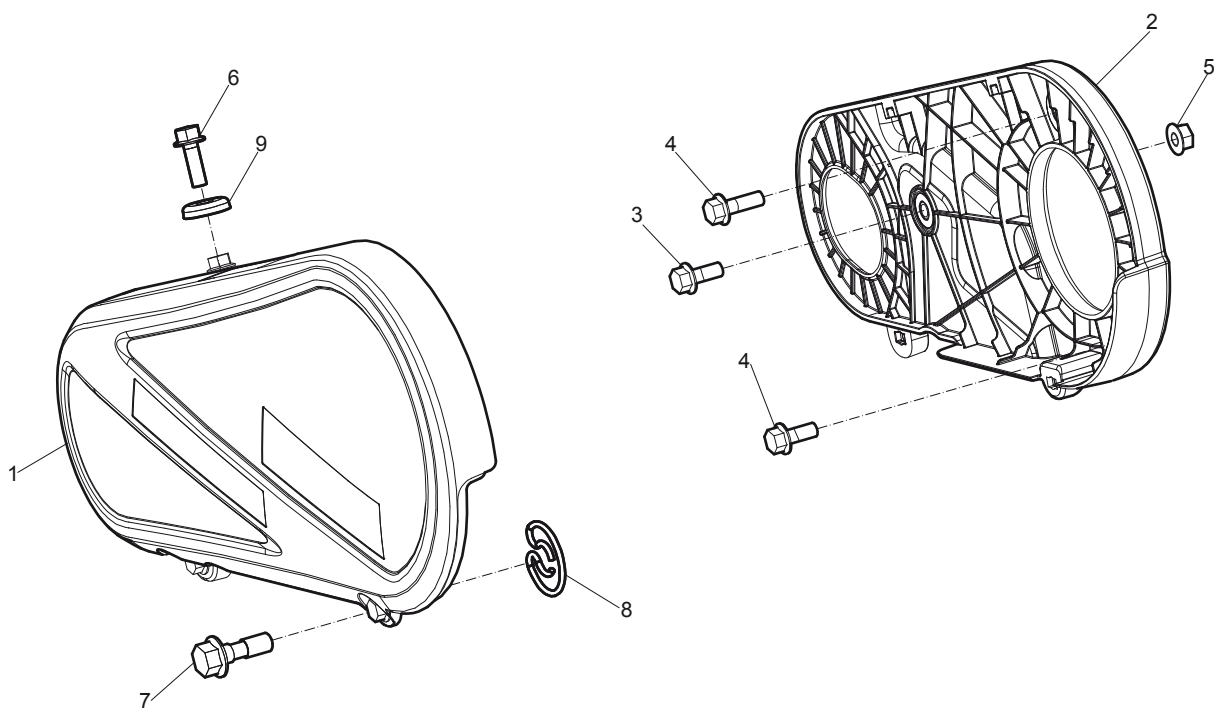
No.	Description	Remark	Quantity	Part number
1	Engine	Hatz 1B20	1	4700 3943 38
2	Centrifugal clutch		1	4700 3917 05
3	Washer	8.4 x 22 x 3 mm 300 HV 0.33 x 1.02 x 0.16 in. 300 HV	1	-
4	Screw	M8 x 25 mm 8.8 A2K	1	-
5	Washer	8.4 x 22 x 3 mm 300 HV 0.33 x 1.02 x 0.16 in. 300 HV	4	-
6	Screw	M8 x 35 mm 8.8 A2K	4	-
7	Lock nut	M8 x 1.25 mm A2K	4	-
8	Washer		4	4700 3939 03
9	V-belt		1	4700 3956 59

Transmission cover, Honda



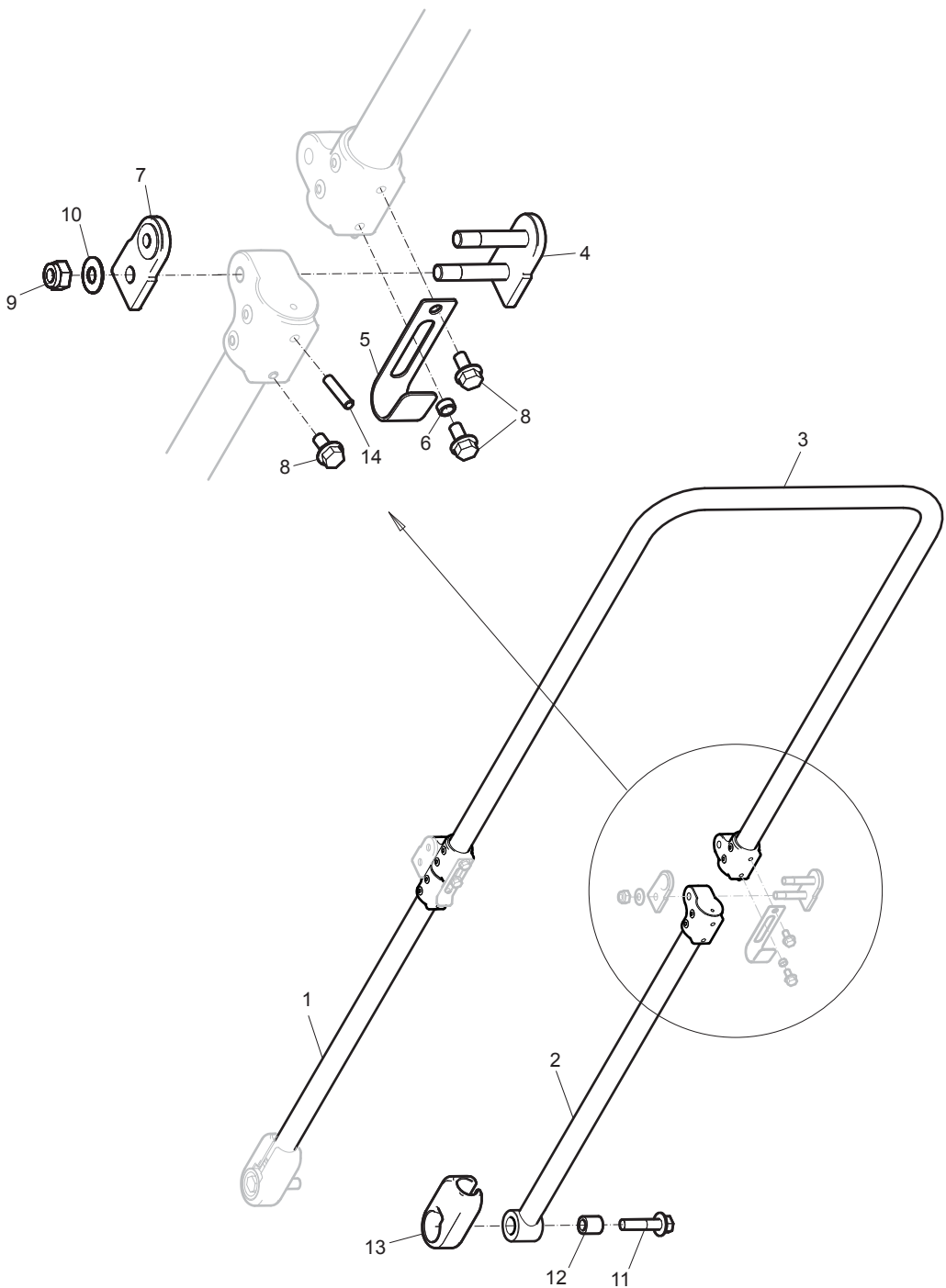
No.	Description	Remark	Quantity	Part number
1	Belt guard	Outer	1	3382 0101 30
2	Belt guard	Inner	1	4700 3933 25
3	Screw	M8 x 25 mm 8.8 A2K	3	-
4	Nut	M8 x 1.25 mm A2K	1	-
5	Screw	M8 x 30 mm 8.8 A2K	3	-
6	Screw		1	4812 0703 68
7	Lock spring		1	4812 0704 31
8	Washer		3	4812 0703 64

Transmission cover, Hatz



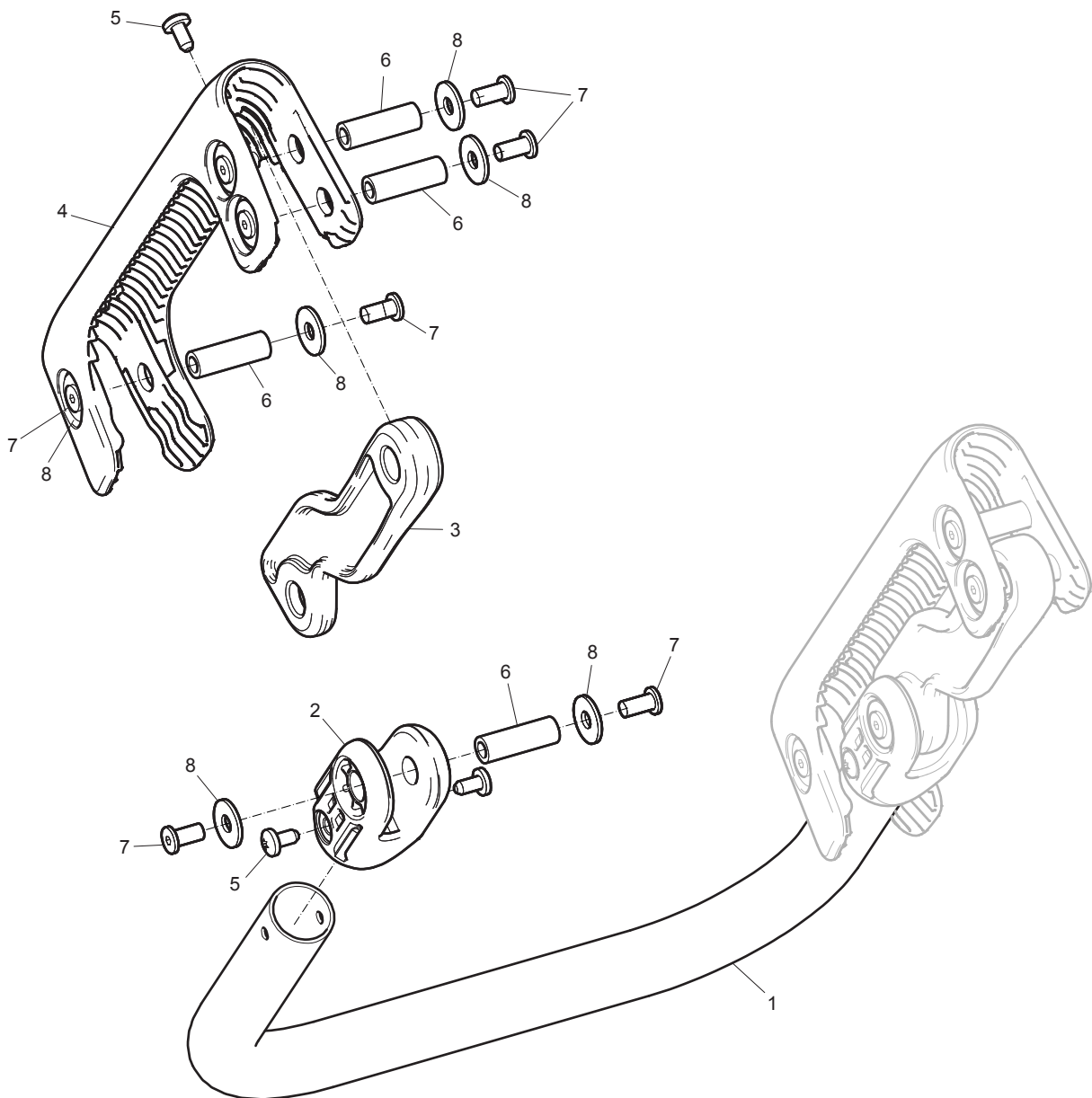
No.	Description	Remark	Quantity	Part number
1	Belt guard	Outer	1	3382 0101 31
2	Belt guard	Inner	1	4700 3933 25
3	Screw	M8 x 25 mm 8.8 A2K	1	-
4	Screw	M10 x 25 mm 8.8 A3K	2	-
5	Nut	M8 x 1.25 mm A2K	1	-
6	Screw	M8 x 30 mm 8.8 A2K	2	-
7	Screw		2	4812 0703 68
8	Lock spring		2	4812 0704 31
9	Washer		2	4812 0703 64

Handle, standard



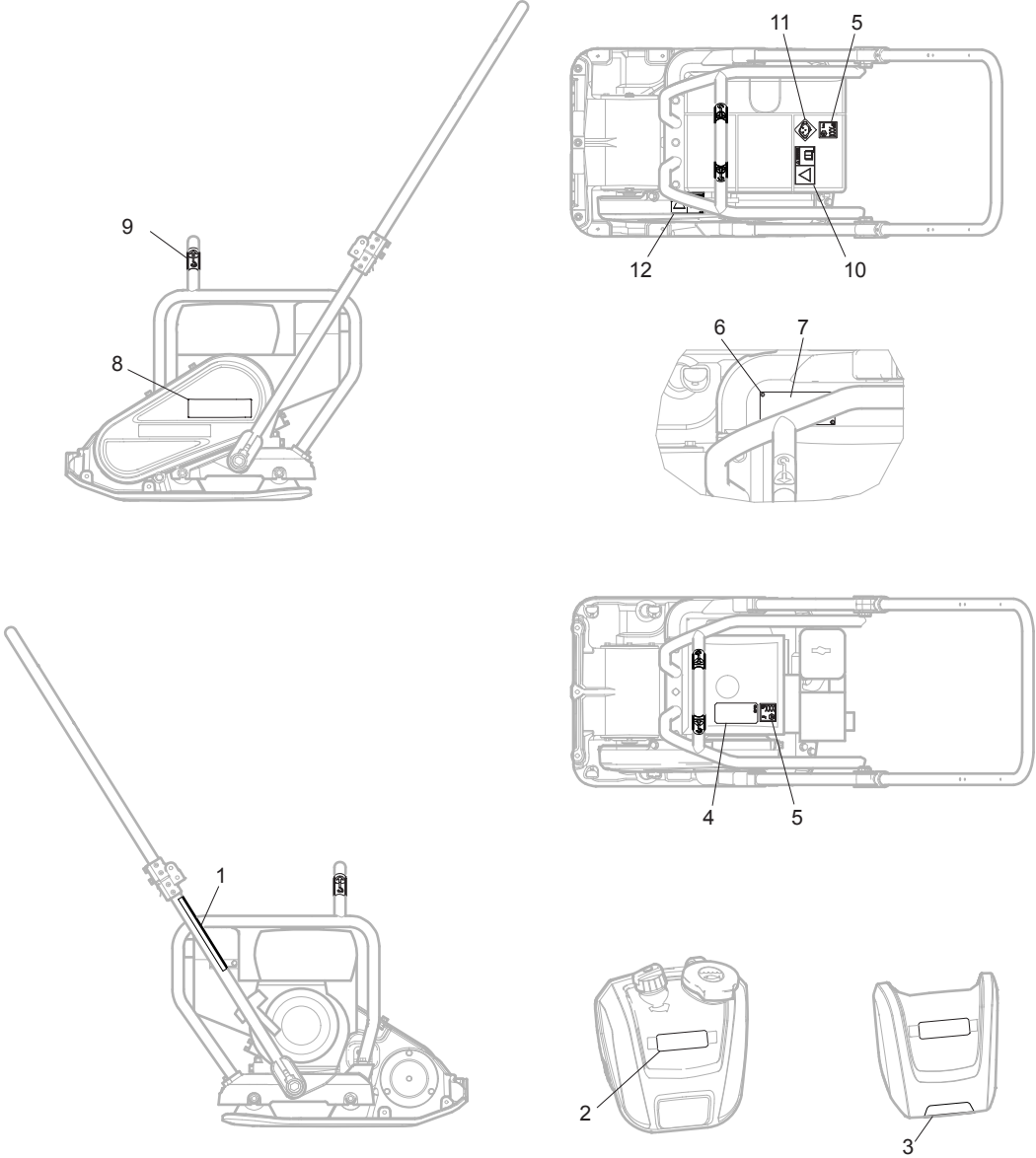
No.	Description	Remark	Quantity	Part number
1	Handle	Left	1	3382 0101 20
2	Handle	Right	1	3382 0101 21
3	Handle		1	3382 0101 22
4	Link		2	4700 3932 20
5	Cover		2	4700 3940 29
6	Spacer sleeve		2	4700 3941 45
7	Washer		2	4700 3942 28
8	Screw	M6 x 40 mm A2K	6	-
9	Lock nut	M8 -8 DIN 985	4	-
10	Disc spring	18 x 8.2 x 1 mm 0.71 x 0.32 x 0.04 in.	4	-
11	Screw	M12 x 50 mm 8.8 A3K	2	-
12	Sleeve bearing		2	4700 3918 21
13	Shock absorber		2	4700 3918 22
14	Spirol pin	5 x 25 mm 0.20 x 0.98 in.	2	-

Vibration damped handle



No.	Description	Remark	Quantity	Part number
1	Handle		1	4700 3918 26
2	Bracket		2	4700 3930 79
3	Shock absorber		2	4700 3918 24
4	Bracket		2	4700 3930 78
5	Screw	M5 x 10 mm A2K	8	-
6	Jointing nut	M6 x 30 mm 8.8	8	-
7	Screw	M6 x 12 mm 10.9 A2T	16	-
8	Washer	6.4 x 18 x 1.6 mm A2T 0.25 x 0.71 x 0.06 in. A2T	16	-

Labels



No.	Description	Remark	Quantity	Part number
1	Label	Start instruction	1	4700 3947 04
2	Product label	"Atlas Copco"	2	3382 0100 40
3	Product label	"LF 130"	1	3382 0101 93
4	Label	Assembly	1	4700 3947 08
5	Noise level label		1	4700 7912 92
6	Drive screw		4	-
7	Data plate		1	-
8	Product Label	"LF 130"	1	3382 0101 89
9	Label	Lift point	1	4700 3575 87
10	Safety label	Read instruction manual	1	4700 9046 80
11	Label	Ear protection	1	4700 2818 98
12	Safety label	Rotating V-belts	1	4700 9038 32

Kits

One year service kit, Honda

One year service kit

Part number 3382 1000 01

Description	Remark	Quantity	Part number
Air filter		5	4700 2393 23
Gasket	For oil dipstick.	1	4700 2383 03
V-belt	See section "Engine installation"	1	4700 3956 58
Starting rope		1	4700 2393 74
Spark plug		1	4700 9242 42
Gasket	For valve cover.	1	4700 2383 01

One year service kit, Hatz

One year service kit

Part number 3382 1000 02

Description	Remark	Quantity	Part number
Air filter		5	4700 9370 13
Gasket	For oil drain plug.	1	4700 9370 03
V-belt	See section "Engine installation".	1	4700 3956 59
Starting rope		1	4700 9369 89
Fuel filter		5	4700 9396 18
Gasket	For valve cover.	1	4700 9397 68

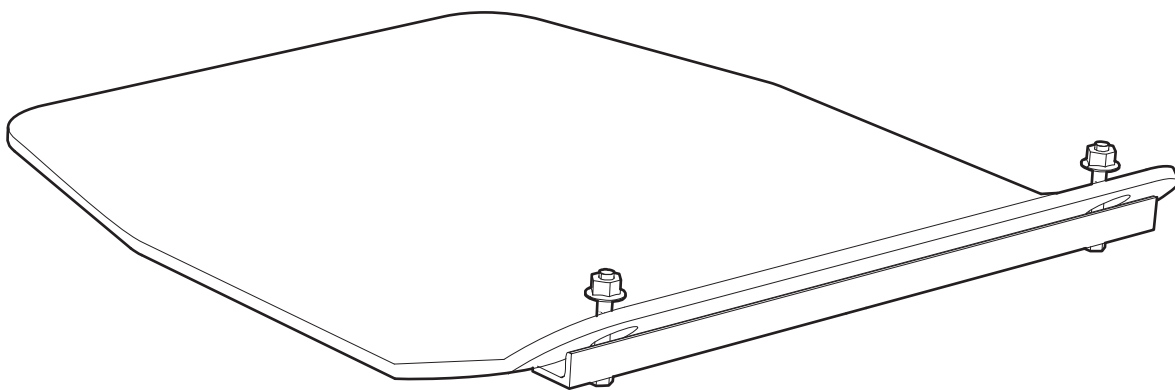
Shock absorber repair kit

Description	Remark	Quantity	Part number
Shock absorber repair kit		1	3382 1000 07
Shock absorber	For ground plate See section "Ground plate installation".	4	4700 2823 73
Nut	M10 A3K See section "Ground plate installation".	8	-
Shock absorber	For handle See section "Handle, standard".	2	4700 3918 22
Screw	M12 x 50 mm 8.8 A3K See section "Handle, standard".	2	-

Eccentric element repair kit

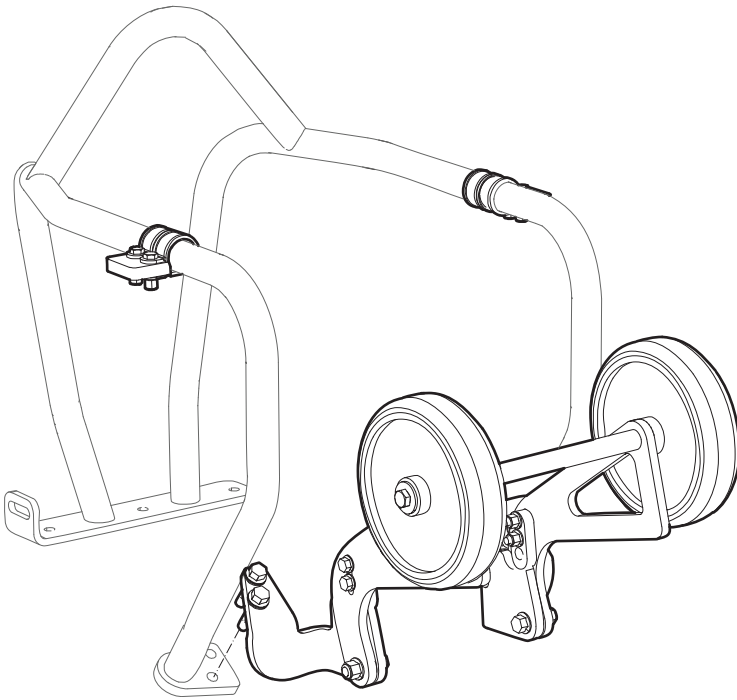
Description	Remark	Quantity	Part number
Eccentric element repair kit		1	3382 1000 04
Screw	M8 x 25 mm 8.8 A2K See section "Ground plate installation".	1	-
Washer	8.4 x 22 x 3 mm 0.33 x 0.87 x 0.12 in. HV300 See section "Ground plate installation".	1	-
Oil seal	See section "Ground plate installation".	1	4700 1631 05
Screw	M6 x 16 mm 8.8 A2K See section "Ground plate installation".	6	-
Bearing	See section "Ground plate installation".	2	4700 7927 11

Block paving plate kit 500 mm (19.7 in.)



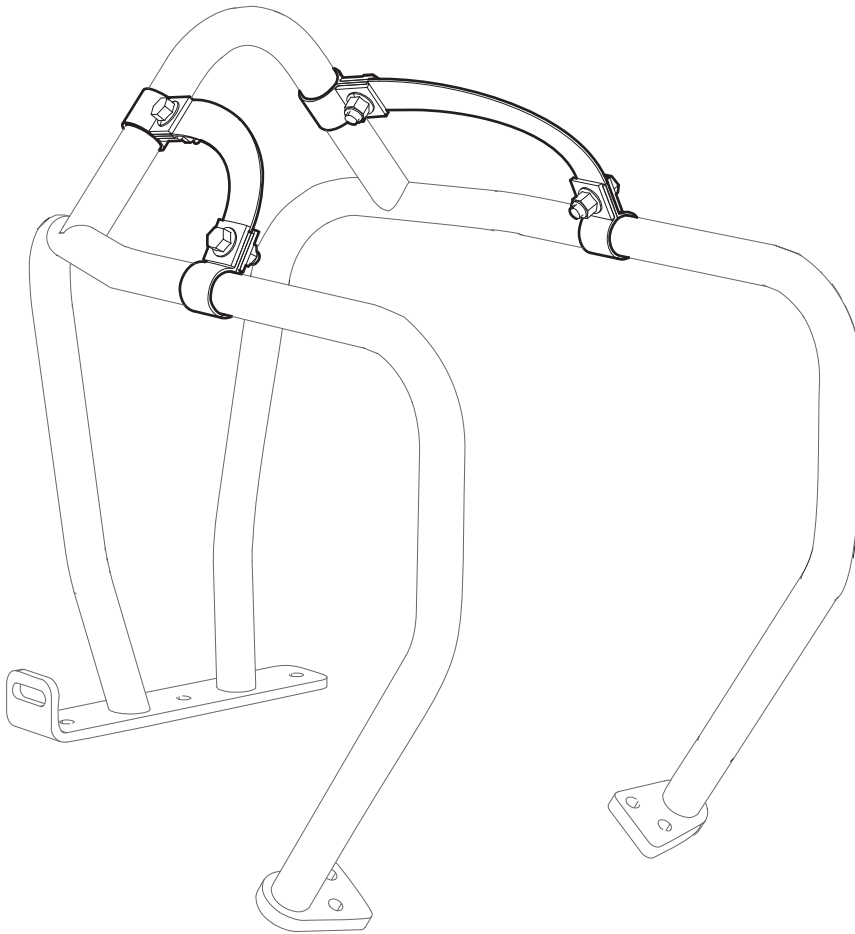
Description	Remark	Quantity	Part number
Block paving plate kit		1	4812 0701 72
Polyurethane plate	500 mm 19.7 in.	1	-
Bracket		1	-
Nut	M8 x 1.25 mm A2K	2	-
Washer	8.4 x 16 x 1.5 mm 0.33 x 0.63 x 0.06 in. 300 HV	2	-
Screw	M8 x 75 mm 8.8 A2K	2	-

Transport device kit



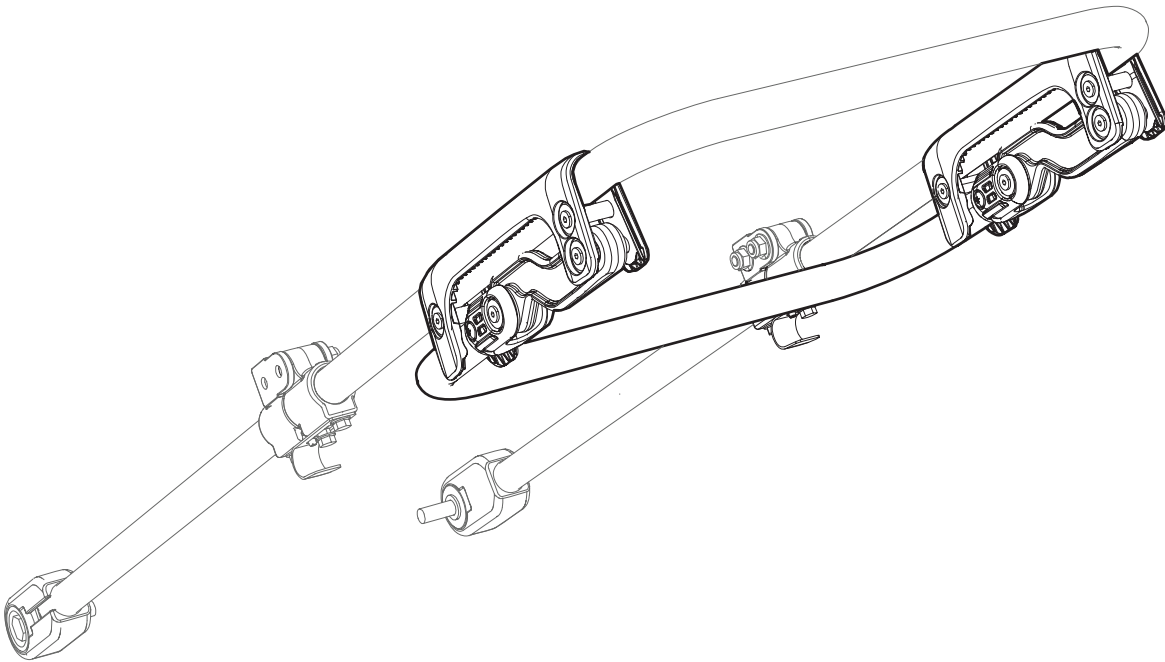
Description	Remark	Quantity	Part number
Transport device kit		1	3382 0102 14
Wheel bracket	Left	1	-
Wheel bracket	Right	1	-
Wheel		2	-
Latch		2	-
Washer	8.4 x 25 x 2 mm 0.33 x 0.98 x 0.08 in.	4	-
Screw	M8 x 12 mm 8.8 A2K	2	-
Screw	M8 x 30 mm 8.8 A2K	2	-
Nut	M8 x 1.25 mm A2K	2	-
Screw	M8 x 20 mm 8.8 A2K	4	-
Nut	M6 x 1 mm A2K	8	-
Screw	M8 x 25 mm 8.8 A2K	4	-
Screw	M8 x 35 mm 8.8 A2K	4	-
Pipe clamp		4	-
Stop		2	-
Screw	M6 x 25 mm 8.8 A2K	4	-

Fork lifting device kit



Description	Remark	Quantity	Part number
Fork lifting device kit		1	4812 0701 73
Strap		1	-
Screw		4	-
Square washer	8.4 x 26 x 4 mm 0.33 x 1.02 x 0.16 in. 300 HV	8	-
Nut	M8 x 1.25 mm A2K	8	-

Vibration damped handle kit



Description	Remark	Quantity	Part number
Vibration damped handle kit		1	4812 0701 57
Bracket		2	-
Nut	M6 x 30 mm 8.8	8	-
Screw	M6 x 12 mm 10.9 A2T	16	-
Shock abosorber		2	-
Bracket		2	-
Handle		1	-
Screw	M5 x 10 mm A2K	8	-
Washer	6.4 x 18 x 1.6 mm 0.25 x 0.71 x 0.06 in. A2T	16	-

