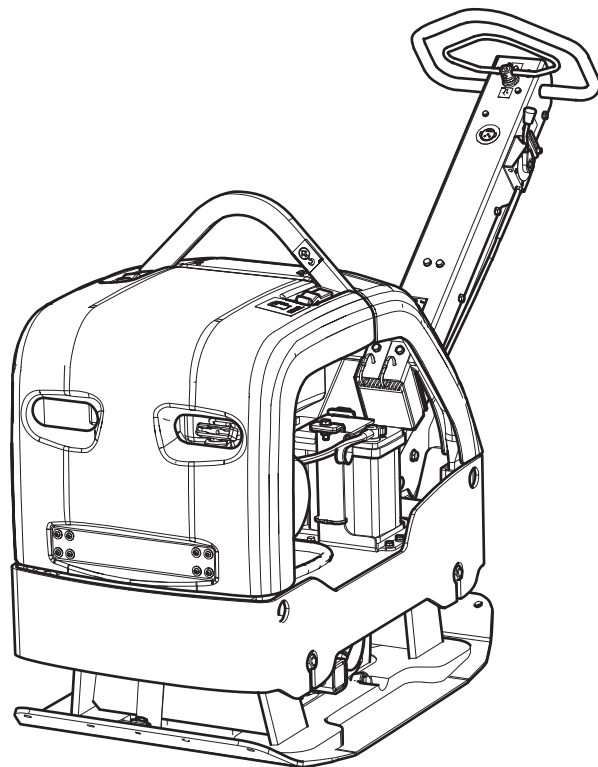


## Spare parts list

### Forward and reversible plate

	Valid from serial number
LG 400 Honda Manual start 650 mm	34001001
LG 400 Lombardini Electric start 650 mm CE	34001001
LG 400 Lombardini Electric start 650 mm EPA	34001001
LG 400 Lombardini Electric start 650 mm CE CI	34001001
LG 400 Lombardini Electric start 650 mm CE CI Bio	34001001
LG 400 Lombardini Electric start 650 mm EPA CI	34001001
LG 400 Lombardini Electric start 650 mm CE Bio	34001001





# Contents

General information.....	5
Spare parts list.....	6
Frame and hoods.....	6
Engine plate.....	8
Ground plate and eccentric element installation.....	10
Eccentric element.....	12
Engine installation, Honda.....	14
Engine installation, Lombardini.....	16
Centrifugal clutch, Honda.....	18
Centrifugal clutch, Lombardini.....	20
Belt tightner.....	22
Hydraulic system.....	24
Battery installation.....	26
Compaction indicator.....	28
Handle.....	30
Throttle control, Honda.....	32
Throttle control, Lombardini.....	34
Labels.....	36
Kits.....	38
One year service kit, Honda.....	38
One year service kit, Lombardini.....	38
Shock absorber repair kit.....	39
Eccentric element repair kit.....	39
Forward and reverse piston repair kit.....	40
Compaction indicator kit.....	41



## General information

This spare parts list applies to the following:

Part number	Description
3382 0000 11	Forward and reversing plate LG 400 Honda Manual start 650 mm
3382 0000 09	Forward and reversing plate LG 400 Lombardini Electric start 650 mm CE
3382 0000 49	Forward and reversing plate LG 400 Lombardini Electric start 650 mm CE Bio
3382 0000 10	Forward and reversing plate LG 400 Lombardini Electric start 650 mm EPA
3382 0000 06	Forward and reversing plate LG 400 Lombardini Electric start 650 mm CE CI
3382 0000 08	Forward and reversing plate LG 400 Lombardini Electric start 650 mm CE CI Bio
3382 0000 07	Forward and reversing plate LG 400 Lombardini Electric start 650 mm EPA CI

Use only authorized parts. Any damage or malfunction caused by the use of unauthorized parts is not covered by Warranty or Product Liability.  
Any unauthorized use or copying of the contents or any part thereof is prohibited. This applies in particular to trademarks, model denominations, part numbers, and drawings.

### Instructions for use

This spare parts list contains no safety regulations and is merely intended to assist in the ordering of spare parts.

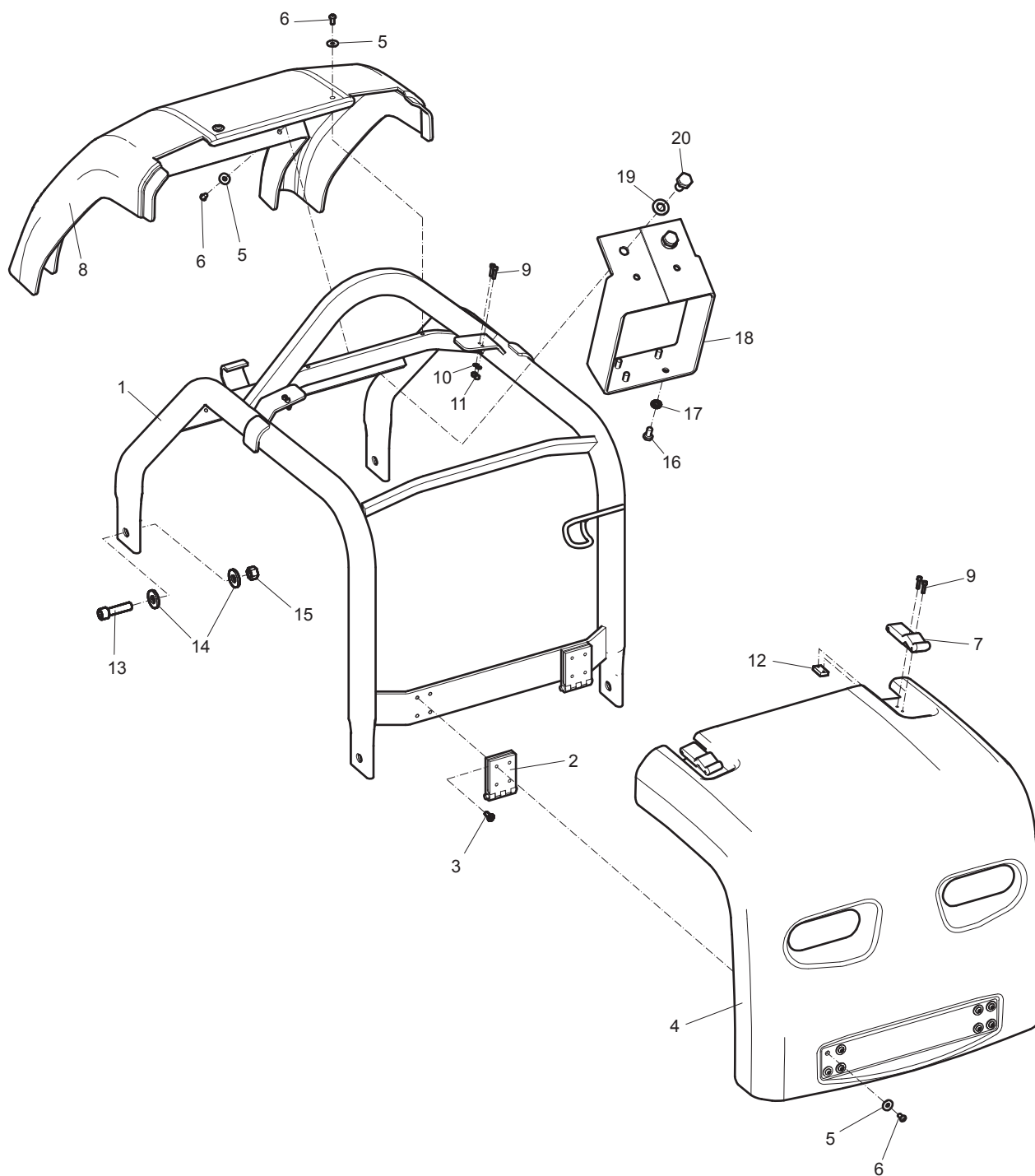
For information about operating, servicing, or repairing, the relevant Safety and operating instructions must be consulted at all costs.

Please observe the safety instructions listed in the relevant Safety and operating instructions!

# Spare parts list

## Frame and hoods

---

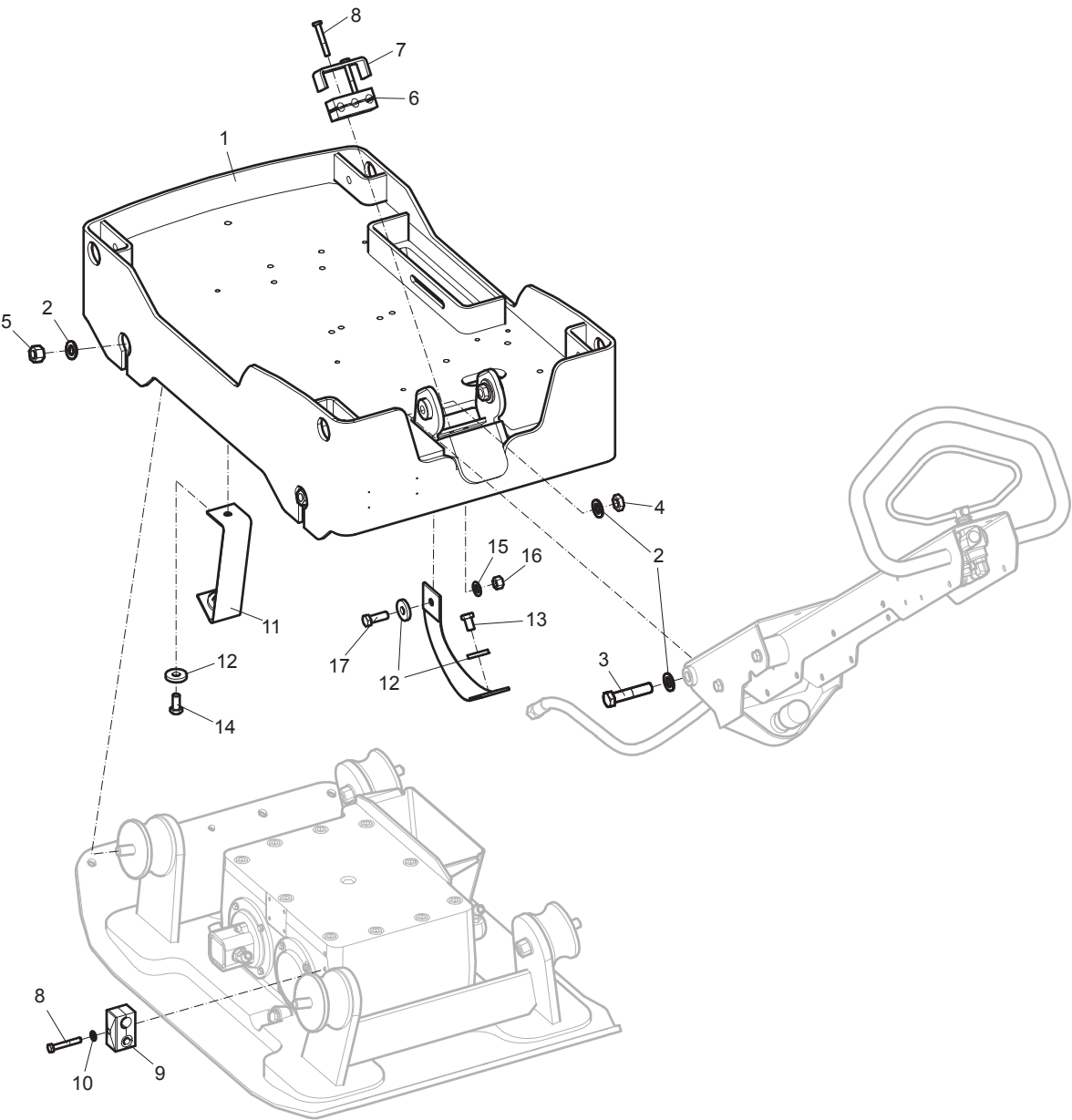


No.	Description	Remark	Quantity	Part number
1	Protective frame		1	3382 0100 53
2	Hinge		2	4700 3818 82
3	Screw	M6 x 16 mm A2-70	8	-
4	Cover		1	3382 0100 54
5	Washer	6 x 18 x 2 mm 0.24 x 0.71 x 0.08 in. 300 HV	12	-
6	Screw	M8 x 50 mm 12.9 UNBRAKO® U-130	12	-
7	Latch		2	4700 3888 46
8	Cover		1	3382 0100 54
9	Screw	M4 x 16 mm 8.8 A2K	8	-
10	Washer	0.17 x 0.31 x 0.8 mm 0.47 x 0.87 x 0.03 in. 300 HV	4	-
11	Nut	M4 ISO7040	4	-
12	Stop plate		2	4700 3879 56
13	Screw	M12 x 45 mm 12.9 GEOMET®	1	4700 9045 22
14	Washer	13 x 30 x 4 mm 0.51 x 1.18 x 0.16 in. 300 HV	8	-
15	Nut	M12	4	-
16	Screw	M5 x 10 mm 8.8 A2K	4	-
17	Washer	5.3 x 10 x 1 mm 0.21 x 0.39 x 0.04 in. 300 HV	4	-
18	Bracket		1	4700 3972 54
19	Washer	8.4 x 16 x 1.5 mm 0.33 x 0.63 x 0.06 in. 300 HV	2	-
20	Screw	M8 x 16 mm 8.8 A2K	2	-

UNBRAKO is a registered trademark of Deepak Fasteners (Shannon) Limited.

GEOMET is a registered trademark of Nof Metal Coatings North America Inc.

# Engine plate

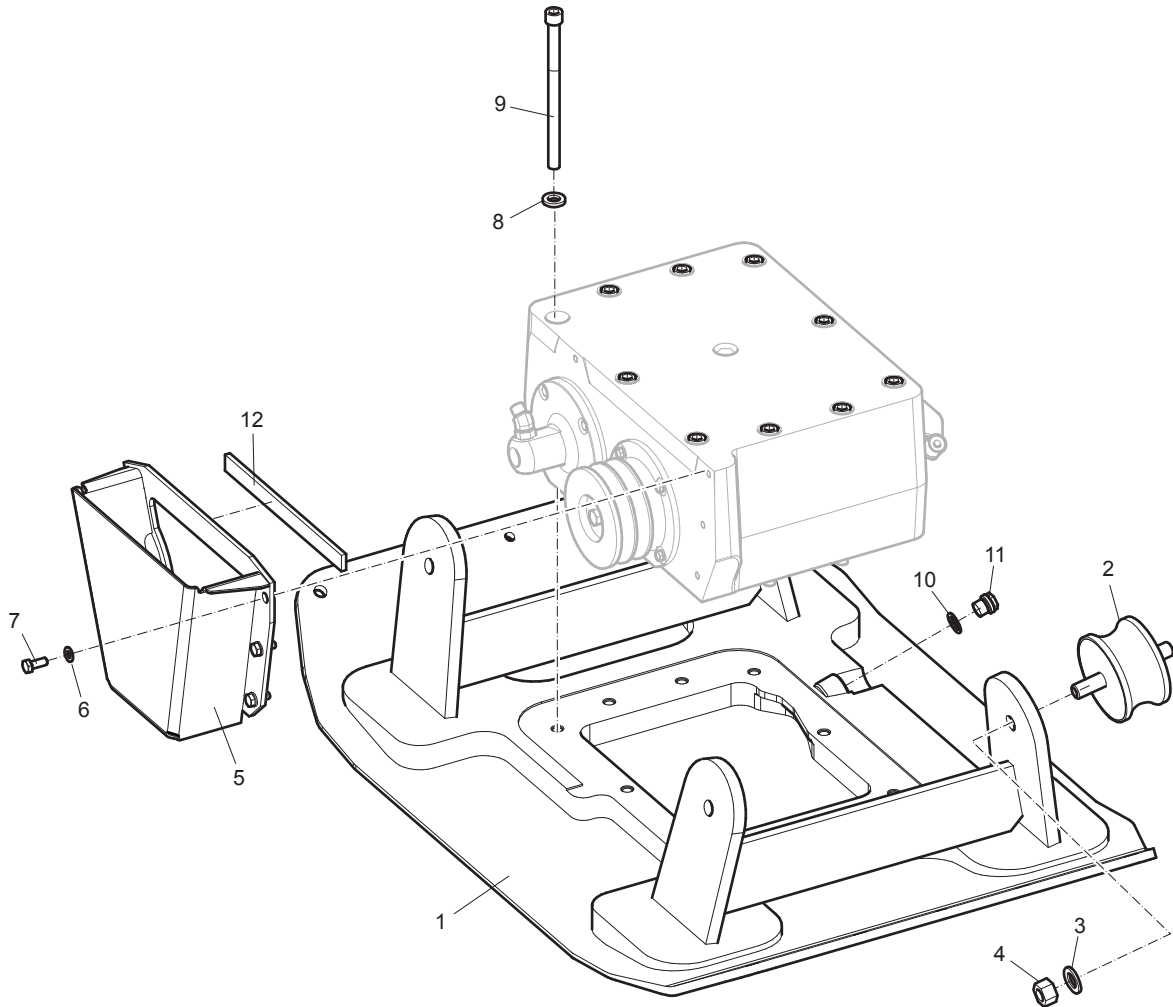




No.	Description	Remark	Quantity	Part number
1	Engine plate		1	3382 0100 56
2	Washer	17 x 30 x 3 mm 0.70 x 1.18 x 0.12 in. 300 HV	8	-
3	Screw	M16 x 75 mm 10.9 GEOMET®	2	4700 9479 43
4	Nut	M16 A3K	2	4700 5730 04
5	Nut	M16 A3K	4	-
6	Rubber block		1	4700 2805 34
7	Bracket		1	3382 0101 82
8	Screw	M8 x 55 mm 8.8 A2K	3	-
9	Hose holder		1	4700 3834 58
10	Washer	8.4 x 16 x 1.5 mm 0.33 x 0.63 x 0.06 in. 300 HV	1	-
11	Strap		2	3382 0100 59
12	Washer	13 x 36 x 6 mm 0.51 x 1.42 x 0.24 in. 300 HV	4	-
13	Screw	M8 x 20 mm 8.8 A2K	2	-
14	Screw	M12 x 25 mm 8.8 A3K	1	4700 5000 51
15	Washer	13 x 24 x 2 mm 0.51 x 0.98 x 0.08 in. 300 HV	1	-
16	Nut	M12 A3K	1	-
17	Screw	M12 x 35 mm 8.8 A3K	1	-

GEOMET is a registered trademark of Nof Metal Coatings North America Inc.

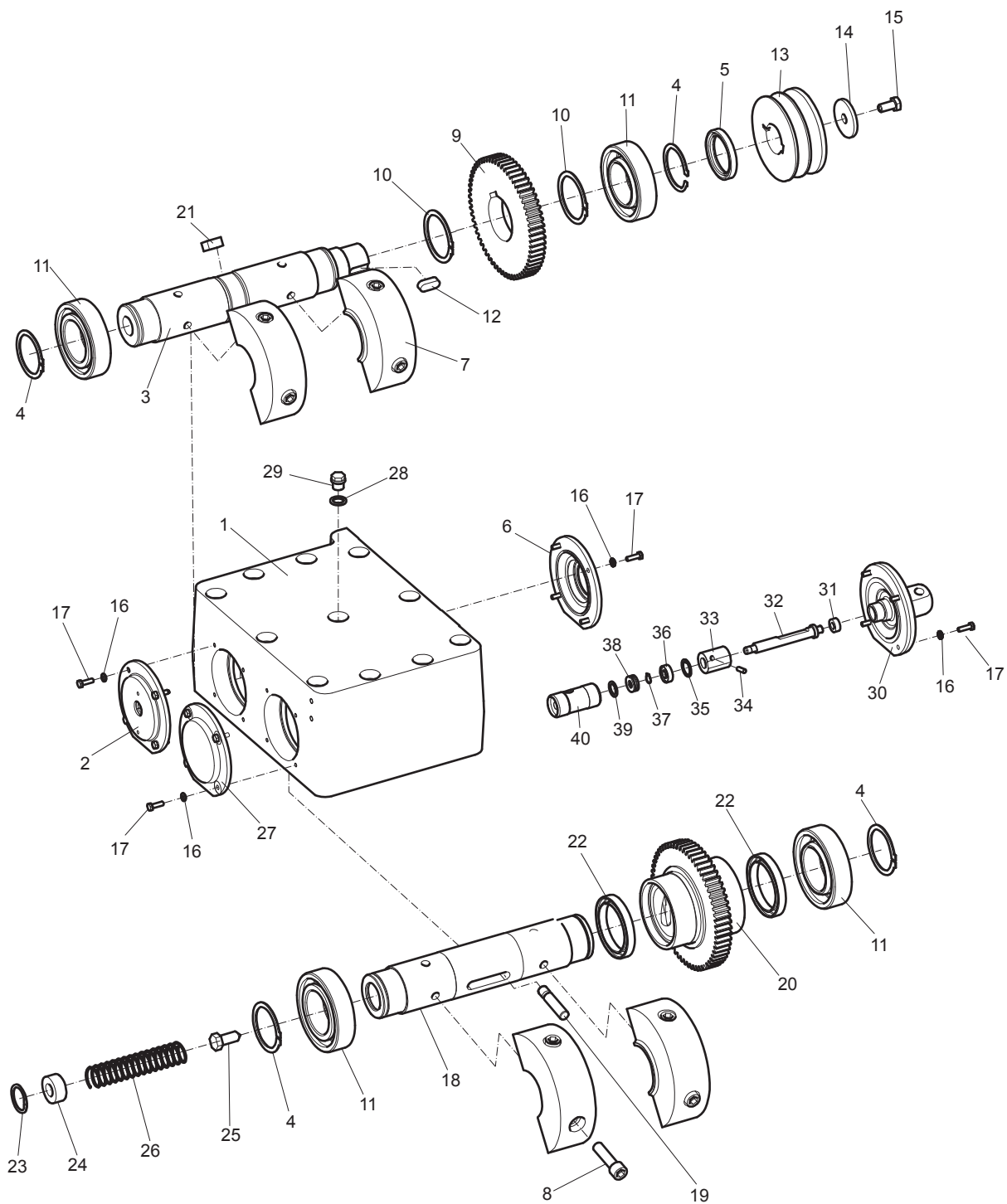
## Ground plate and eccentric element installation



No.	Description	Remark	Quantity	Part number
1	Ground plate		1	4812 0702 85
2	Shock absorber		4	4700 2804 54
3	Washer	17 x 30 x 3 mm 0.70 x 1.18 x 0.12 in. 300 HV	4	-
4	Nut	M16 A3K	4	-
5	V-belt cover		1	4812 0703 55
6	Washer	8.4 x 16 x 1.5 mm 0.33 x 0.63 x 0.06 in. 300 HV	5	-
7	Screw	M8 x 20 mm 8.8 A2K	5	-
8	Washer	13 x 24 x 6 mm 0.51 x 0.95 x 0.16 in. 300 HV	10	4700 9047 03
9	Screw	M10 x 40 mm 12.9 GEOMET®	10	4700 7928 29
10	Washer	Sealing	1	4700 1620 11
11	Plug		1	4700 2321 43

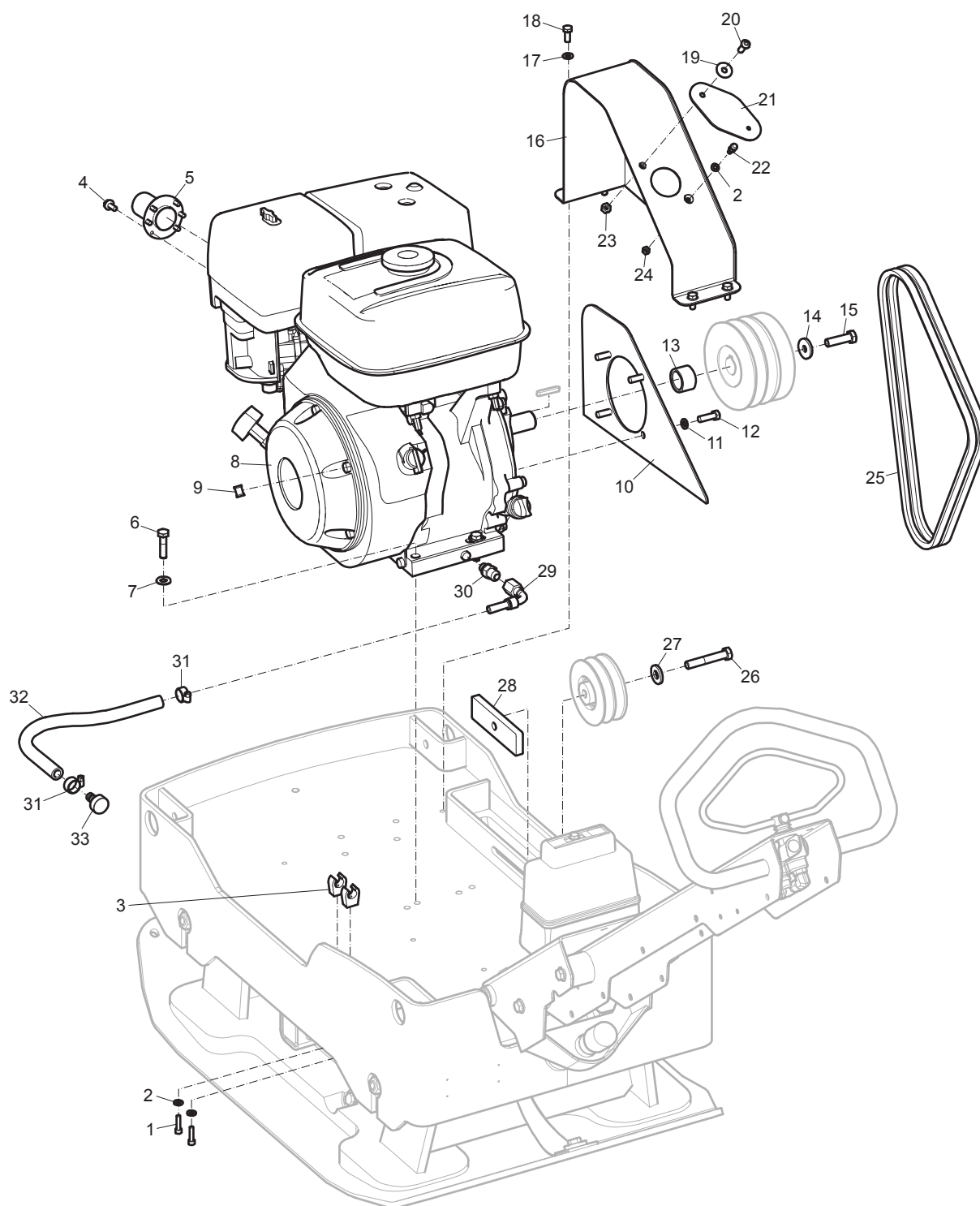
GEOMET is a registered trademark of Nof Metal Coatings North America Inc.

## Eccentric element



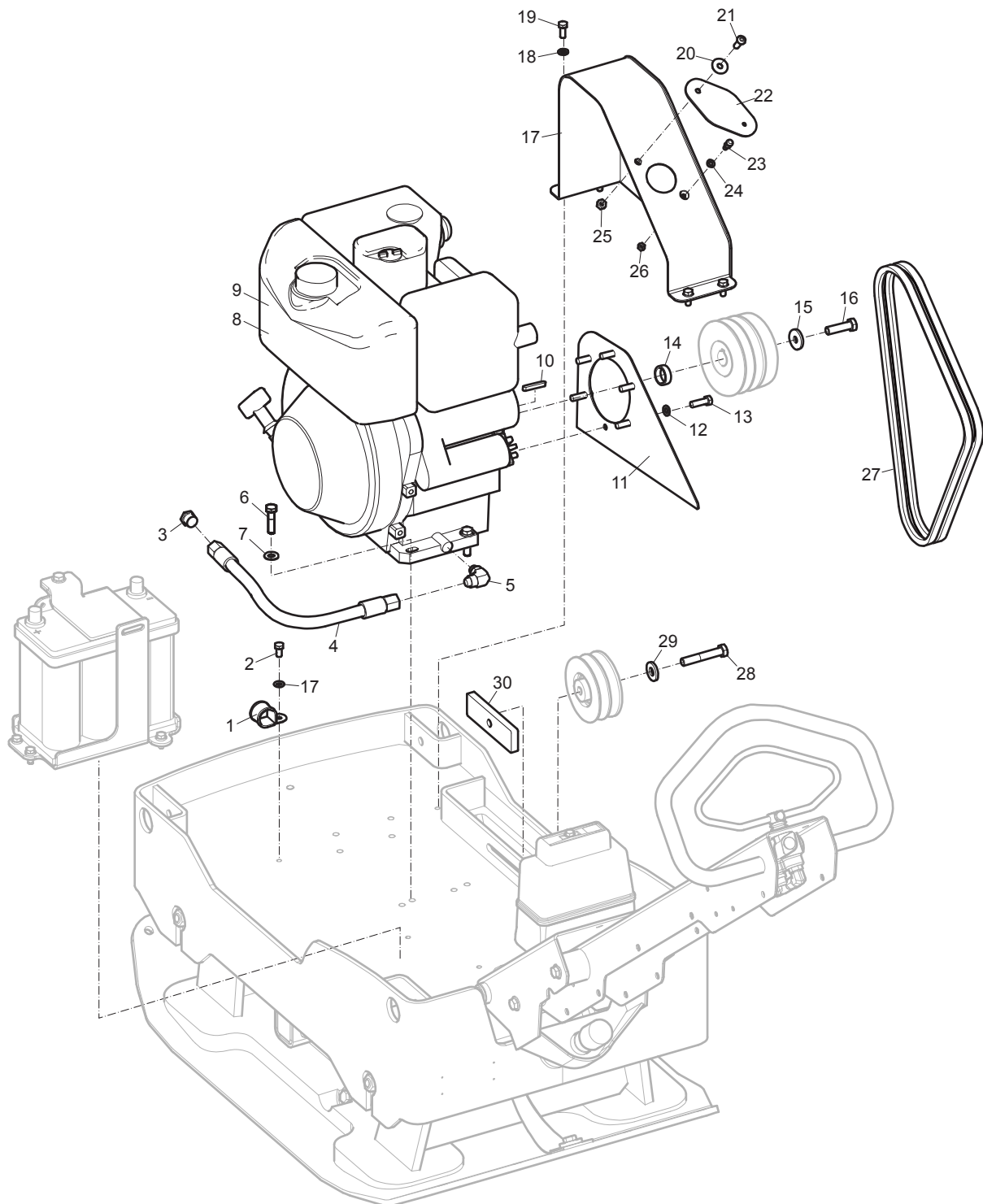
No.	Description	Remark	Quantity	Part number
1	Eccentric housing		1	4700 3975 20
2	Cover		1	4700 3790 79
3	Shaft		1	4700 3779 86
4	Retainer ring		4	4700 1500 33
5	Sealing ring		1	4700 9287 94
6	Cover		1	4700 3790 80
7	Eccentric weight		4	4700 3975 22
8	Screw	M12 x 45 mm 8.8 A3K	8	4700 9287 91
9	Gear		1	4700 3782 16
10	Snap ring		2	4700 1500 20
11	Ball bearing		4	4700 9287 86
12	Key		1	4700 9287 88
13	Pulley		1	4700 3777 76
14	Washer		1	4700 2804 32
15	Screw	M10 x 20 mm 8.8 A3K	1	-
16	Washer	6.4 x 12 x 1.5 mm 0.25 x 0.47 x 0.06 in. 300 HV	16	-
17	Screw	M6 x 20 mm 8.8 A2K	16	-
18	Eccentric weight		1	4812 0700 73
19	Pin		1	4700 2804 42
20	Reverser		1	4812 0700 93
21	Key		1	4700 2804 50
22	Ball bearing		2	4700 9287 96
23	Retainer ring		1	4700 9287 87
24	Stop		1	4700 2804 48
25	Stop screw		1	4700 2804 49
26	Spring		1	4700 9287 98
27	Cover		1	4700 3790 81
28	Washer	16.7 x 24 x 1.5 mm Type A M16 0.66 x 4.88 x 0.06 in.	1	4700 1620 11
29	Plug		1	4700 2321 43
30	Hydraulic cylinder		1	4812 0700 42
31	Sealing ring		1	4700 2812 76
32	Piston rod		1	4812 0700 44
33	Cap		1	4812 0700 43
34	Spring pin		1	4700 6290 62
35	Retainer ring		1	4700 1510 39
36	Ball bearing		1	4812 0703 59
37	Retainer ring		1	4700 1500 02
38	Thrust ball bearing		1	4812 0703 62
39	Spring washer		1	4812 0703 63
40	Piston		1	4812 0700 52

## Engine installation, Honda



No.	Description	Remark	Quantity	Part number
1	Screw	M6 x 25 mm 8.8 A2K	2	-
2	Washer	6.4 x 12 x 1.5 mm 0.25 x 0.47 x 0.06 in. 300 HV	3	-
3	Ryw-clips		2	4700 2812 34
4	Screw	M4 x 10 A2K	6	-
5	Exhaust pipe		1	4700 3974 76
6	Screw	M10 x 40 mm 8.8 A3K	4	-
7	Steel plain washer	10.5 x 22 x 2 mm 0.41 x 0.87 x 0.08 in. 300 HV	4	-
8	Engine	Honda GX390 UTI SWA4 SD	1	4700 3975 29
9	Clamp		2	4700 9210 65
10	Belt guard	Inner	1	4812 0701 92
11	Washer	8.4 x 16 x 1.5 mm 0.33 x 0.63 x 0.06 in. 300 HV	4	-
12	Screw	M8 x 20 mm 8.8 A2K	4	-
13	Spacer		1	4812 0702 23
14	Washer		1	4811 0001 08
15	Screw	M8 x 30 mm	1	-
16	V-belt cover		1	3382 0100 52
17	Washer	8.4 x 16 x 1.5 mm 0.33 x 0.63 x 0.06 in. 300 HV	4	-
18	Screw	M8 x 20 mm 8.8 A2K	4	-
19	Washer	8.4 x 25 x 2 mm 0.33 x 0.99 x 0.08 in. 300 HV	1	-
20	Screw	M8 x 25 mm A2-70	1	4700 9046 54
21	Rubber protection		1	4700 3972 82
22	Ball joint	M6 DIN 71803	1	4700 7928 24
23	Nut	M8 A2K	1	-
24	Nut	M6 A2K	1	-
25	V-belt		2	4811 0000 72
26	Screw	M12 x 70 mm 8.8 A3K	1	-
27	Washer	13 x 30 x 4 mm 0.51 x 1.18 x 0.16 in. 300 HV	1	-
28	Holder		1	4700 3972 81
29	Connector		1	4700 7920 99
30	Connector		1	4700 9032 68
31	Hose clamp	11-18 x 9 mm 0.43 -0.71 x 0.35 in.	2	4700 3130 01
32	Hose		1	3382 0101 86
33	Plug		1	3382 0101 80

## Engine installation, Lombardini

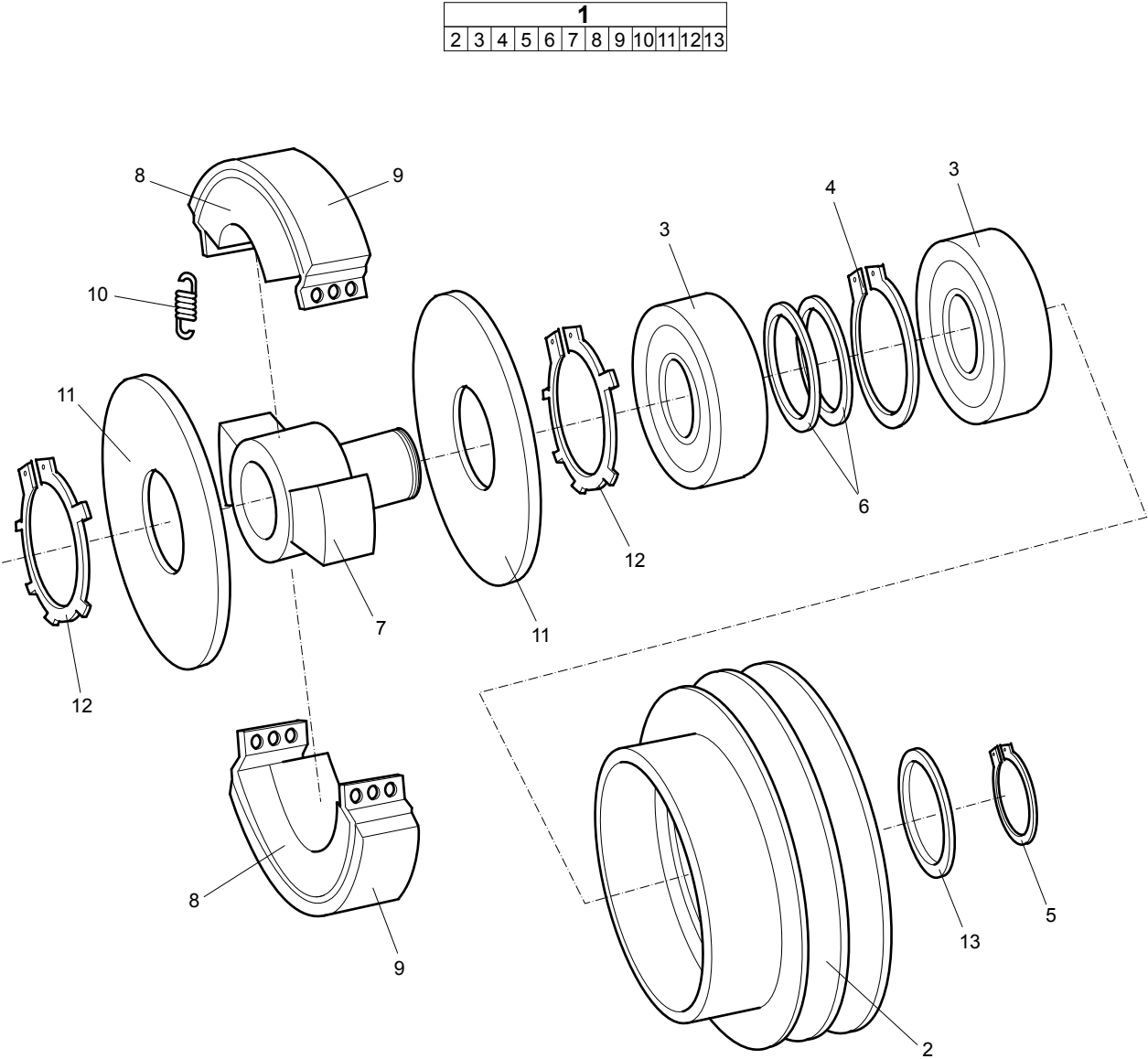




No.	Description	Remark	Quantity	Part number
1	Clamp	28 x 8.4 x 20 mm 1.10 x 0.33 x 0.79 in.	1	4700 9210 44
2	Screw	M8 x 16 mm 8.8 A2K	1	-
3	Plug		1	4700 2320 95
4	Hydraulic hose		1	4700 4821 98
5	Elbow		1	4700 9049 79
6	Screw	M10 x 40 mm 8.8 A3K	4	-
7	Steel plain washer	10.5 x 22 x 2 mm 0.41 x 0.87 x 0.08 in. 300 HV	4	-
8	Engine	Lombardini 15LD440, Only for US-market	1	4812 0703 34
9	Engine	Lombardini 15LD440	1	4700 3975 30
10	Key		1	4700 3501 11
11	Belt guard		1	4812 0701 93
12	Washer	8.4 x 16 x 1.5 mm 0.33 x 0.63 x 0.06 in. 300 HV	6	-
13	Screw	M8 x 20 mm 8.8 A2K	6	-
14	Spacer		1	4700 3975 32
15	Washer	10.5 x 34 x 4 mm GEOMET® 0.41 x 1.34 x 0.16 in	1	4811 0001 26
16	Screw	3/8-24 UNF x 1.26 in. 8.8	1	4700 5030 25
17	V-belt cover		1	3382 0100 52
18	Washer	8.4 x 16 x 1.5 mm 0.33 x 0.63 x 0.06 in. 300 HV	5	-
19	Screw	M8 x 20 mm 8.8 A2K	4	-
20	Washer	8.4 x 25 x 2 mm 0.33 x 0.99 x 0.08 in. 300 HV	1	-
21	Screw	M8 x 25 mm A2-70	1	-
22	Rubber protection		1	4700 3972 82
23	Ball joint	M6 DIN 71803	1	4700 7928 24
24	Washer	6.4 x 12 x 1.5 mm 0.25 x 0.47 x 0.06 in. 300 HV	1	-
25	Nut	M8 A2K	1	-
26	Nut	M6 A2K	1	-
27	V-belt		1	4700 9047 76
28	Screw	M12 x 70 mm 8.8 A3K	1	-
29	Washer	13 x 30 x 4 mm 0.51 x 1.18 x 0.16 in. 300 HV	1	-
30	Holder		1	4700 3972 81

GEOMET is a registered trademark of Nof Metal Coatings North America Inc.

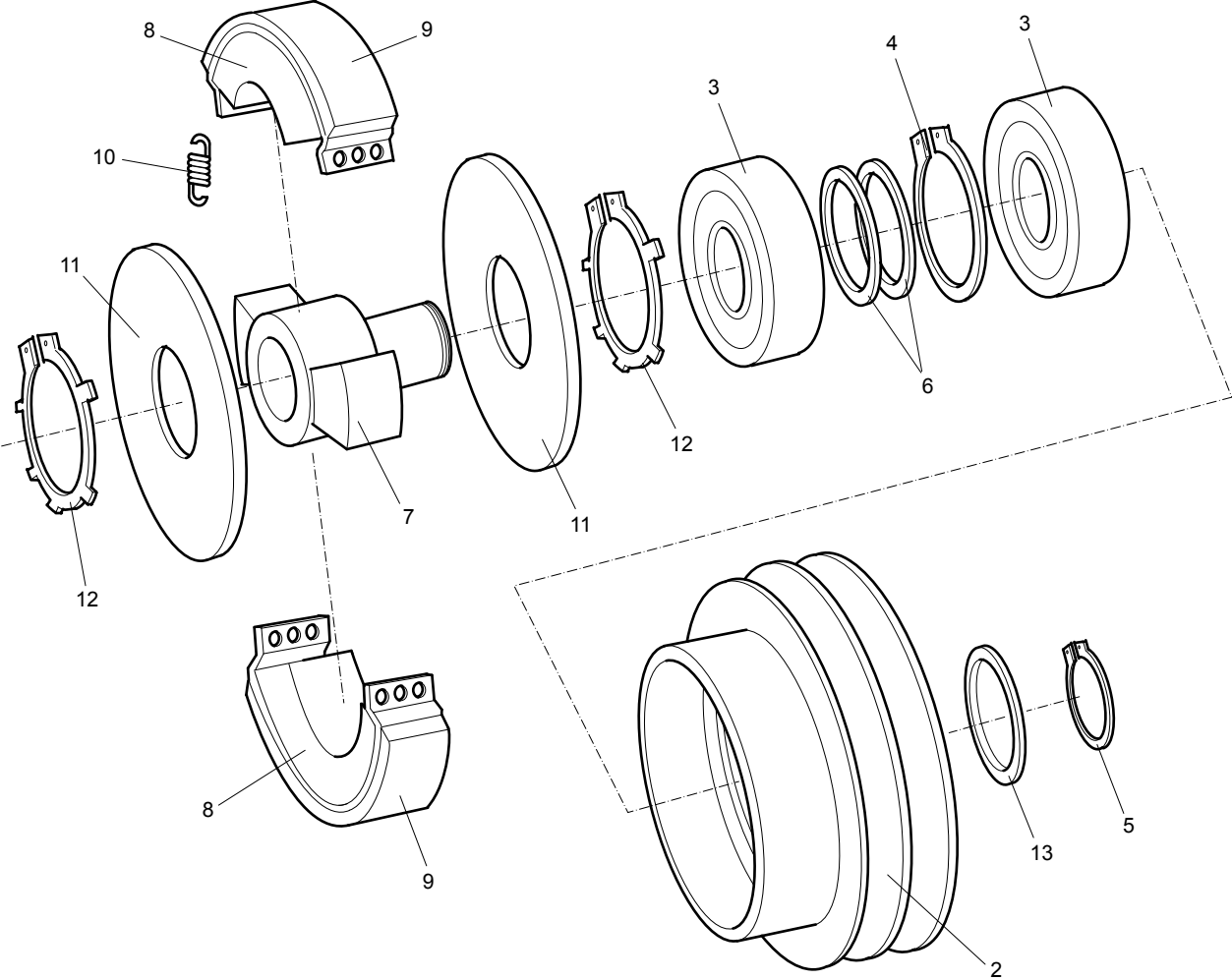
# Centrifugal clutch, Honda



No.	Description	Remark	Quantity	Part number
1(2-13)	Centrifugal clutch, complete		1	4812 0701 97
2	V-belt pulley		1	4812 1558 77
3	Ball bearing		2	4700 9458 02
4	Retaining ring		1	4700 9458 10
5	Retaining ring		1	4700 9356 35
6	Shim		2	4700 9458 11
7	Hub		1	4812 1558 76
8	Weight		2	4700 9458 13
9	Lining		2	4700 2382 06
10	Spring		4	4812 1558 74
11	Cover		2	4700 9458 14
12	Retaining ring		2	4700 9458 15
13	Shim		1	4700 9458 16

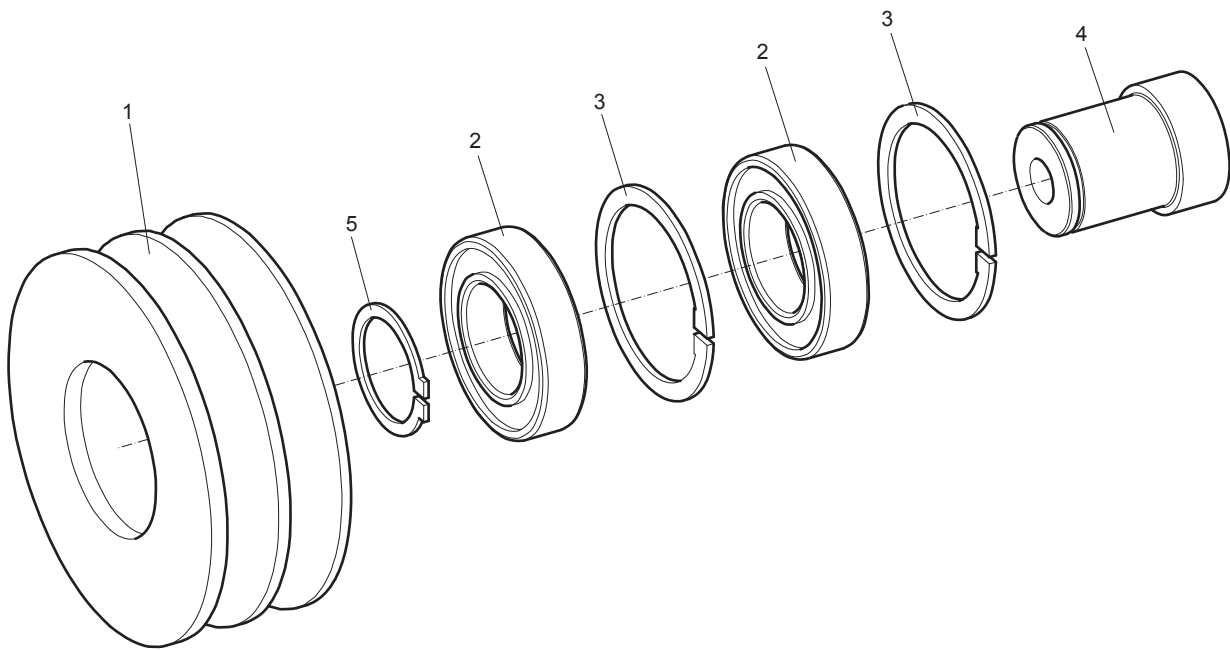
# Centrifugal clutch, Lombardini

1												
2	3	4	5	6	7	8	9	10	11	12	13	



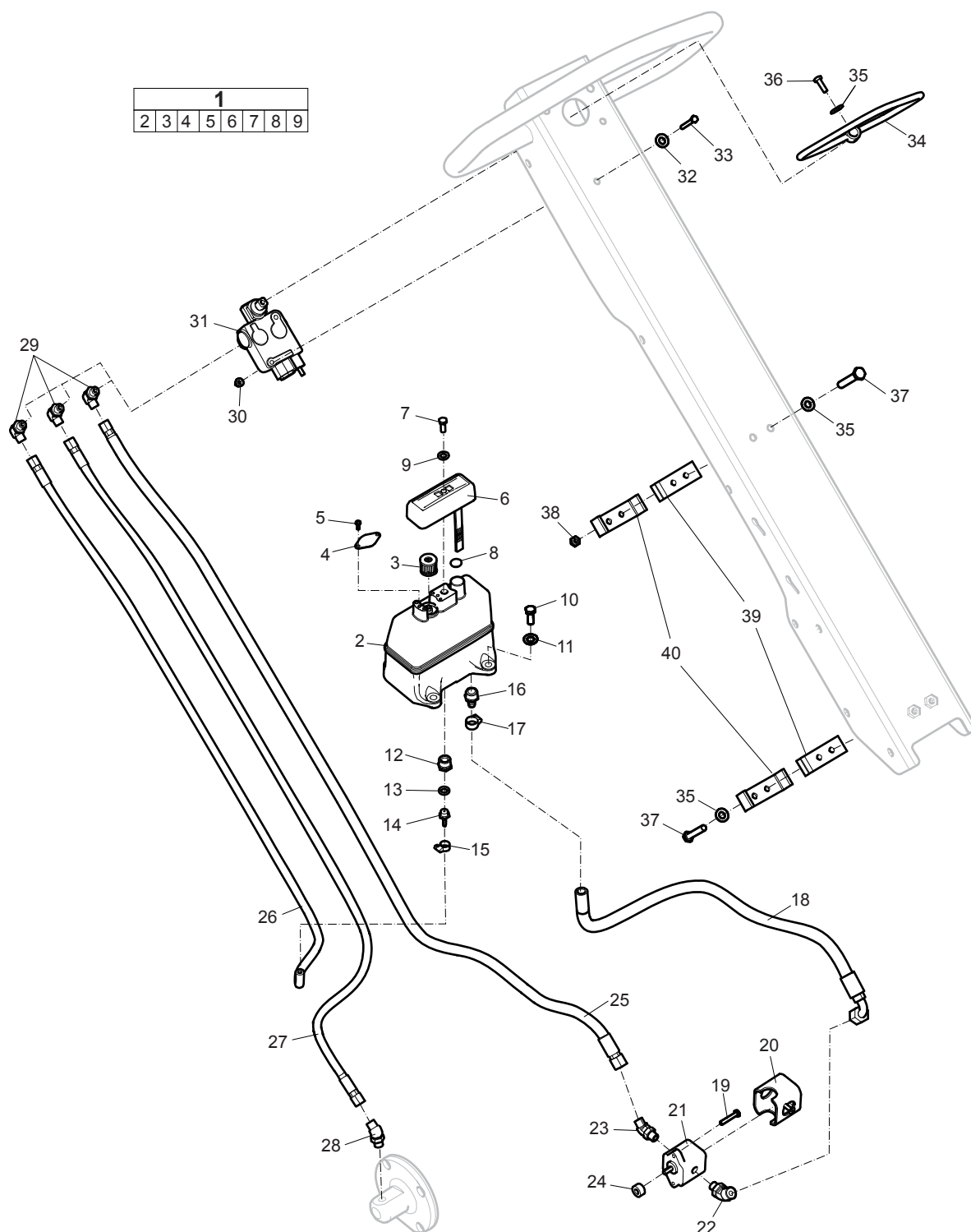
No.	Description	Remark	Quantity	Part number
1(2-13)	Centrifugal clutch, complete		1	4812 0701 94
2	V-belt pulley		1	4812 1558 77
3	Ball bearing		2	4700 9458 02
4	Retaining ring		1	4700 9458 10
5	Retaining ring		1	4700 9356 35
6	Shim		2	4700 9458 11
7	Hub		1	4812 1558 75
8	Weight		2	4700 9458 13
9	Lining		2	4700 2382 06
10	Spring		4	4812 1558 74
11	Cover		2	4700 9458 14
12	Retaining ring		2	4700 9458 15
13	Shim		1	4700 9458 16

## Belt tightner



No.	Description	Remark	Quantity	Part number
1	V-belt pulley		1	4700 3805 17
2	Ball bearing		2	4700 1111 80
3	Retaining ring		2	4700 1510 19
4	Shaft		1	4700 3972 80
5	Snap ring		1	4700 1500 12

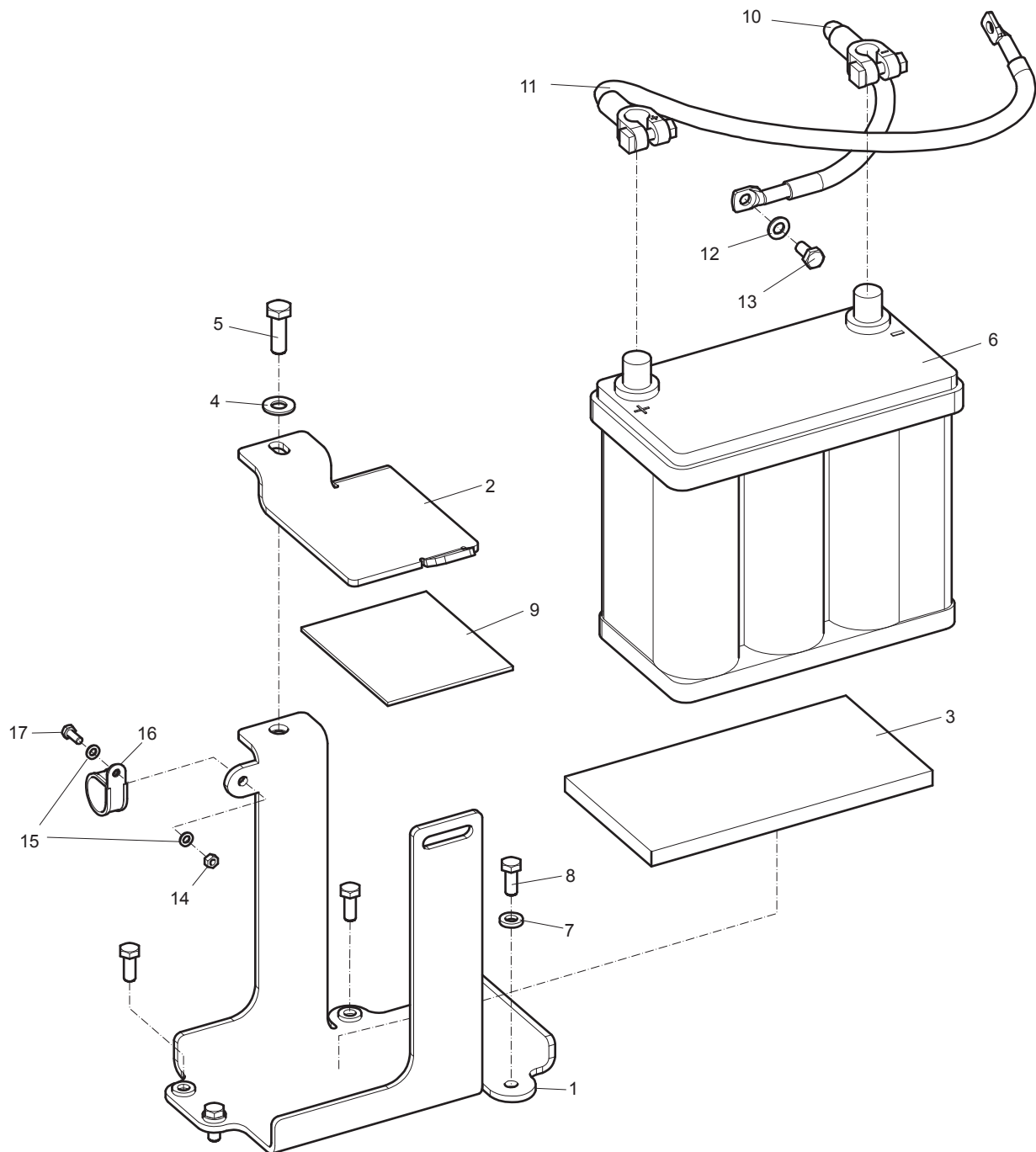
# Hydraulic system





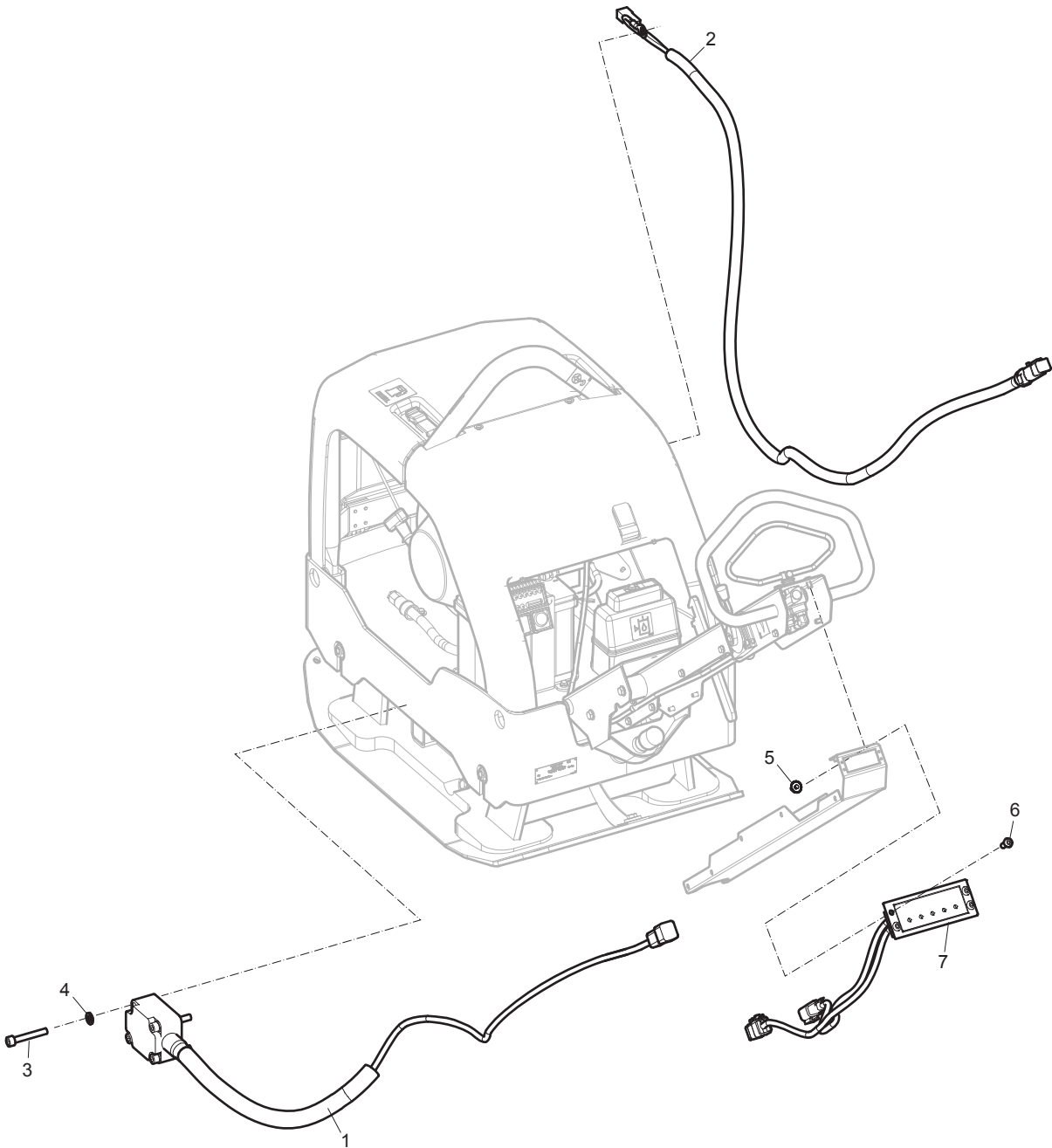
No.	Description	Remark	Quantity	Part number
1(2-9)	Hydraulic oil tank, complete		1	4700 3766 77
2	Tank		1	-
3	Air filter		1	4700 3815 66
4	Holder		1	4700 3815 63
5	Screw	K50 x 12 mm Type KX-PT	2	-
6	Cover		1	4700 3813 85
7	Screw	M8 x 25 mm 8.8 A2K	1	-
8	O-ring	15.3 x 2.4 mm 0.64 x 0.09 in. (Shore 70)	1	4700 1601 10
9	Washer	8.4 x 16 x 1.5 mm 0.33 x 0.63 x 0.06 in. 300 HV	1	-
10	Screw	M10 x 30 mm 8.8 A3K	4	4700 5000 29
11	Washer	10.5 x 22 x 2 mm 0.41 x 0.87 x 0.08 in. 300 HV	4	-
12	Reducer		1	4700 3830 39
13	Washer	13.3 x 18.9 x 1.5 mm 0.52 x 0.74 x 0.06 in. Copper	1	-
14	Hose coupling		1	4700 3833 53
15	Hose clamp		1	4700 3131 08
16	Hose coupling		1	4700 3830 38
17	Hose clamp		1	4700 3130 03
18	Hydraulic hose		1	4700 3780 29
19	Screw	M6 x 20 mm 8.8 A2K	2	-
20	Cover		1	4700 2805 40
21	Hydraulic pump		1	4700 3835 62
22	Elbow		1	4700 7922 53
23	Elbow connector	45°	1	4700 7924 43
24	Sleeve		1	4700 9288 94
25	Hydraulic hose	Connected to port "A"	1	4811 0001 04
26	Hydraulic hose	Connected to port "T"	1	4700 3952 12
27	Hydraulic hose	Connected to port "P"	1	4811 0001 05
28	Elbow connector	45°	1	4700 7924 43
29	Elbow	90°, O-ring	3	4700 7913 97
30	Nut	M6 x 1 mm A2K	2	-
31	Valve		1	4700 2813 75
32	Washer	6.4 x 12 x 1.5 mm 0.25 x 0.47 x 0.06 in. 300 HV	2	-
33	Screw	M6 x 50 mm 8.8 A2K	2	-
34	Control lever		1	4812 0700 25
35	Washer	8.4 x 16 x 1.5 mm 0.33 x 0.63 x 0.06 in. 300 HV	5	-
36	Screw	M8 x 25 mm 8.8 A2K	1	-
37	Screw	M8 x 50 mm 8.8 A2K	4	-
38	Lock nut	M8	2	-
39	Rubber block		2	4700 2805 34
40	Bracket		2	3382 0101 82

## Battery installation



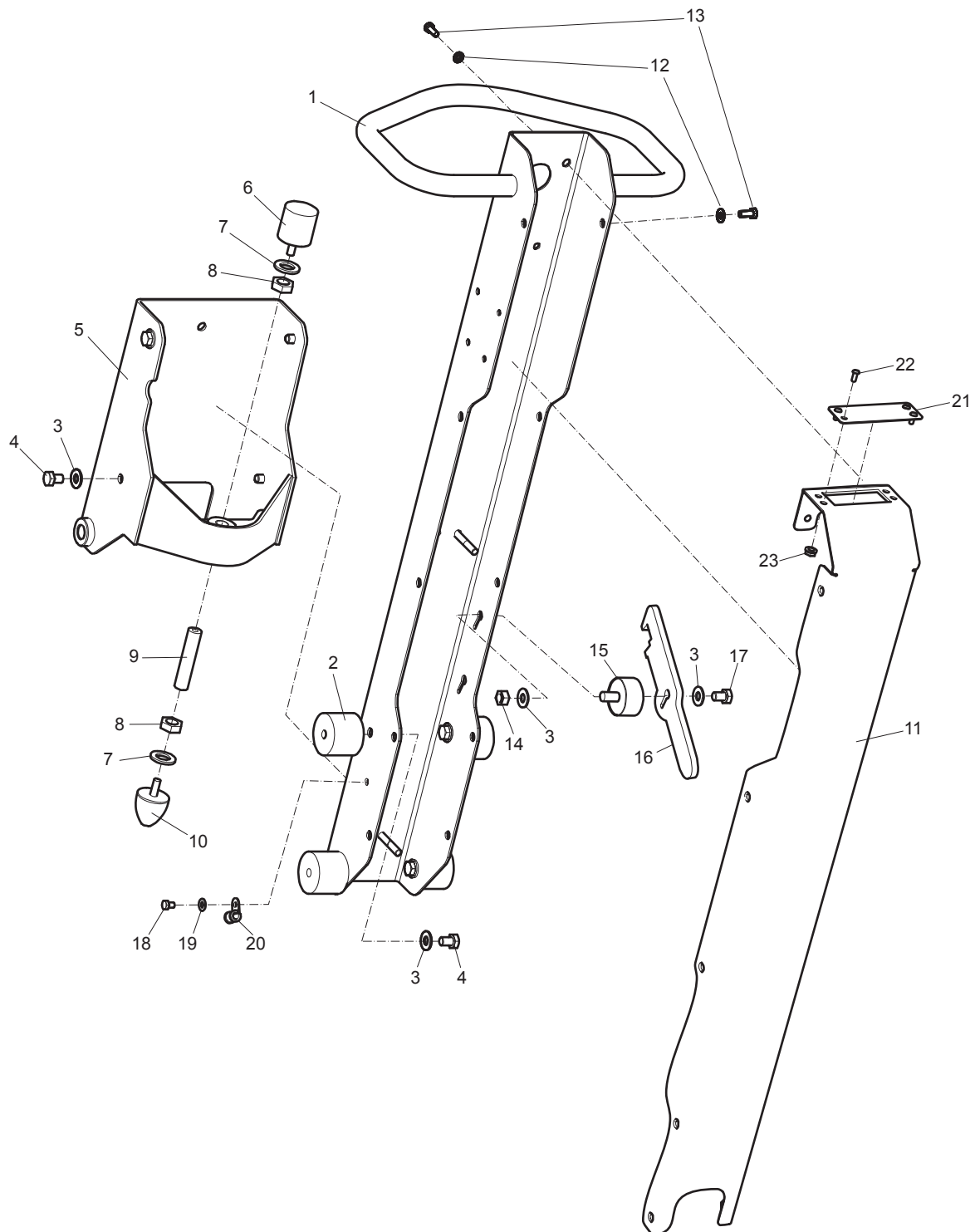
No.	Description	Remark	Quantity	Part number
1	Holder		1	4700 3958 79
2	Bracket		1	4700 3958 78
3	Insulation		1	4700 3956 87
4	Washer	10.5 x 22 x 2 mm 0.41 x 0.87 x 0.08 in. 300 HV	1	-
5	Screw	M10 x 30 mm 8.8 A3K	1	-
6	Battery		1	4700 3787 19
7	Washer	8.4 x 16 x 3 mm 0.33 x 0.63 x 0.12 in. 300 HV	4	-
8	Screw	M8 x 20 mm 8.8 A2K	4	-
9	Rubber cloth		1	4700 3959 98
10	Battery cable	Connected to negative terminal of battery	1	4700 7928 31
11	Battery cable	Connected to positive terminal of battery	1	4700 7928 30
12	Washer	8.4 x 16 x 1.5 mm 0.33 x 0.63 x 0.06 in. 300 HV	1	-
13	Screw	M8 x 16 mm 8.8 A2K	1	-
14	Nut	M8 A2K	1	-
15	Washer	6.4 x 12 x 1.5 mm 0.25 x 0.47 x 0.06 in. 300 HV	2	-
16	Pipe clamp		1	4700 9210 84
17	Screw	M6 x 16 mm 8.8 A2K	1	-

# Compaction indicator



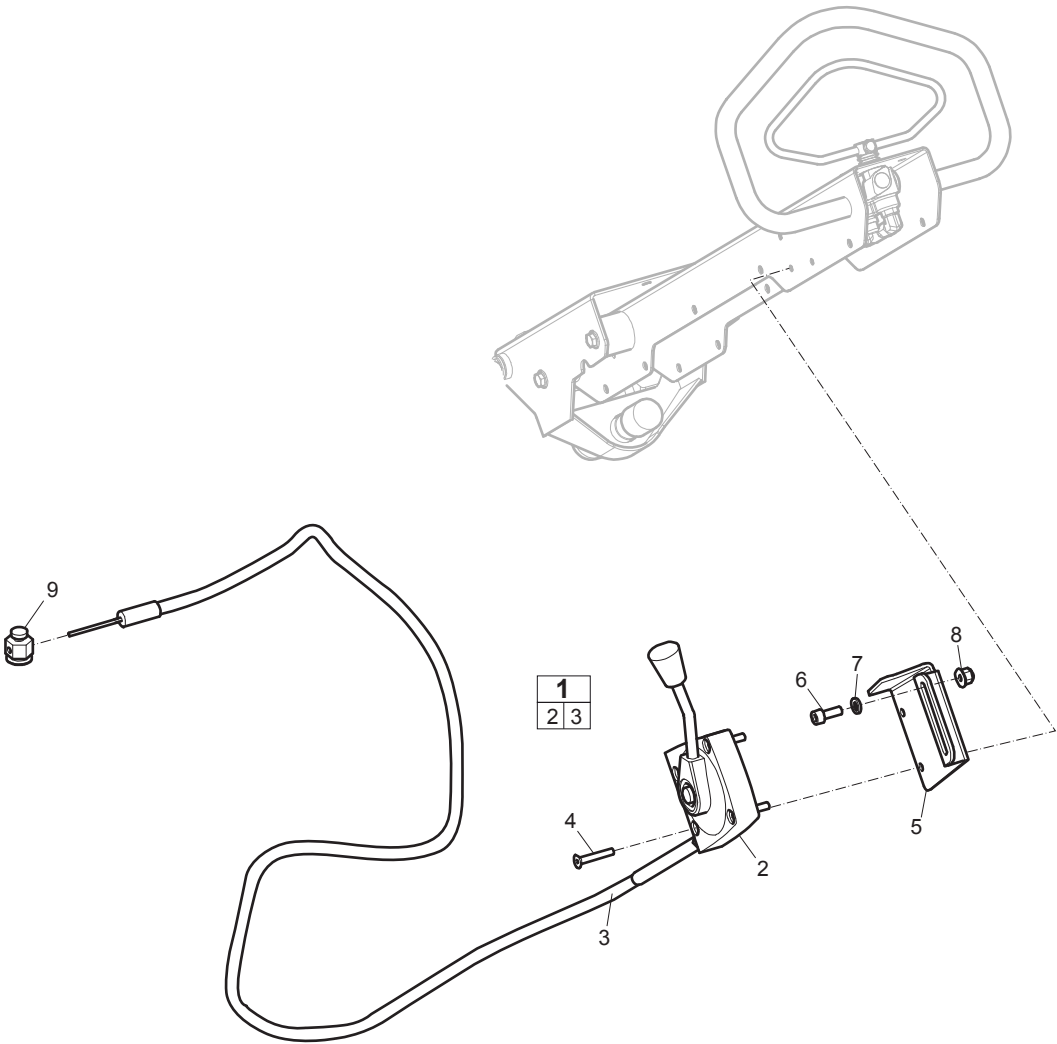
No.	Description	Remark	Quantity	Part number
1	Measure unit		1	4812 0703 76
2	Wiring harness		1	4812 0703 75
3	Screw	M6 x 40 mm 8.8 A2K	4	-
4	Washer	6.4 x 12 x 1.5 mm 0.25 x 0.47 x 0.06 in. 300 HV	4	-
5	Nut	M5 A2K	4	-
6	Screw	M5 x 14 A2-70	4	-
7	Display unit		1	4812 0703 77

# Handle



No.	Description	Remark	Quantity	Part number
1	Handle		1	3382 0100 57
2	Shock absorber		4	3382 0101 83
3	Steel plain washer	10.5 x 22 x 2 mm 0.41 x 0.87 x 0.08 in. 300 HV	10	-
4	Screw	M10 x 14 mm 8.8 A3K	8	-
5	Bracket		1	3382 0100 58
6	Shock absorber		1	4700 7928 32
7	Washer	17 x 30 x 3 mm 0.70 x 1.18 x 0.12 in. 300 HV	2	-
8	Nut	M16 A3K	2	4700 5730 04
9	Stud		1	4700 3975 83
10	Shock absorber		1	4700 7928 32
11	Cover		1	4700 3975 40
12	Washer	8.4 x 16 x 1.5 mm 0.33 x 0.63 x 0.06 in. 300 HV	12	-
13	Screw	M8 x 16 mm 8.8 A2K	12	-
14	Nut	M10 A3K	1	-
15	Shock absorber		1	4700 3853 87
16	Hook		1	4700 3790 04
17	Screw	M10 x 20 mm 8.8 A3K	1	-
18	Screw	M6 x 12 mm 8.8 A2K	1	-
19	Washer	6.4 x 12 x 1.5 mm 0.25 x 0.47 x 0.06 in. 300 HV	1	-
20	Clamp		1	4700 9210 65
21	Cover		1	4812 0703 18
22	Screw	M5 x 14 A2-70	4	-
23	Nut	M5 A2K	1	-

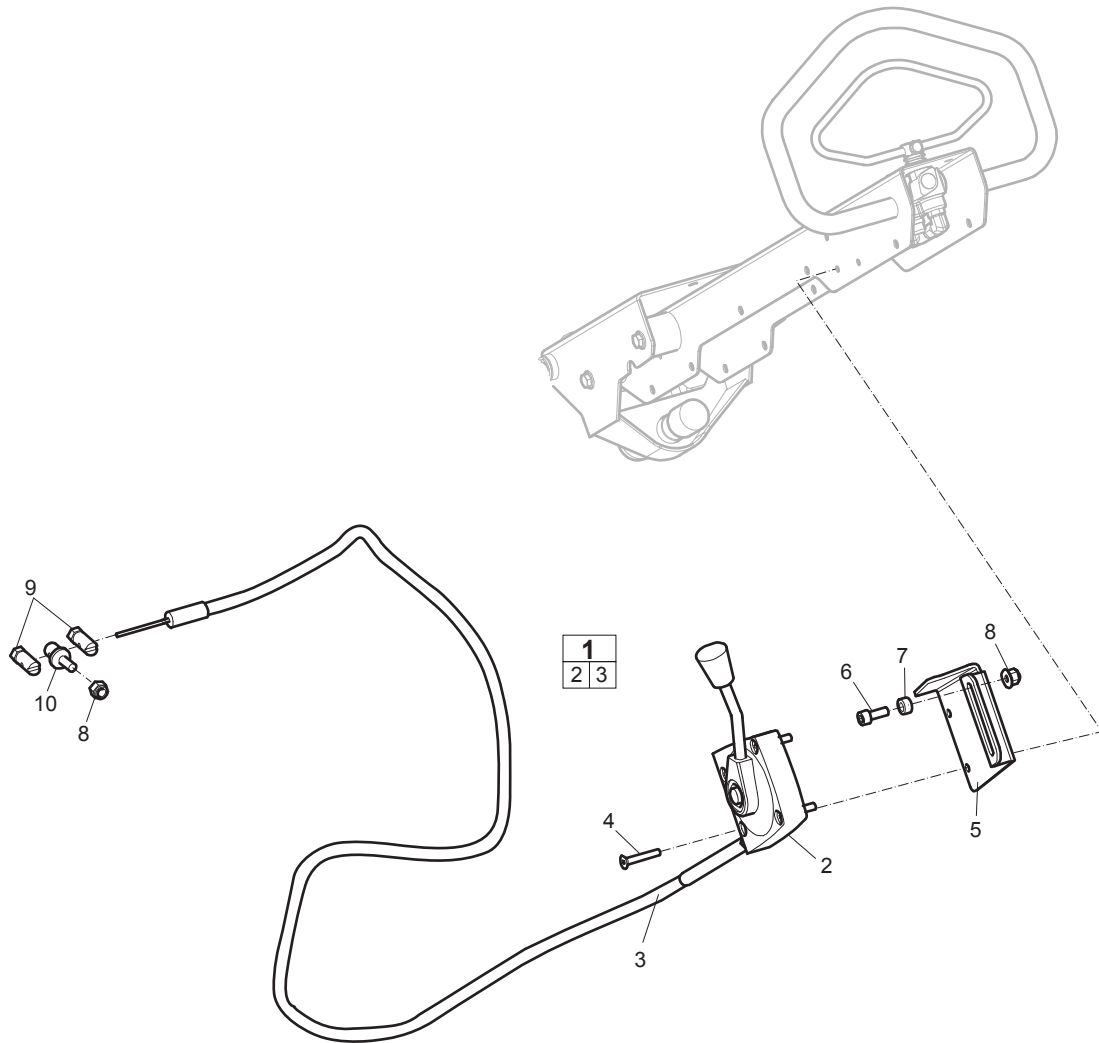
# Throttle control, Honda





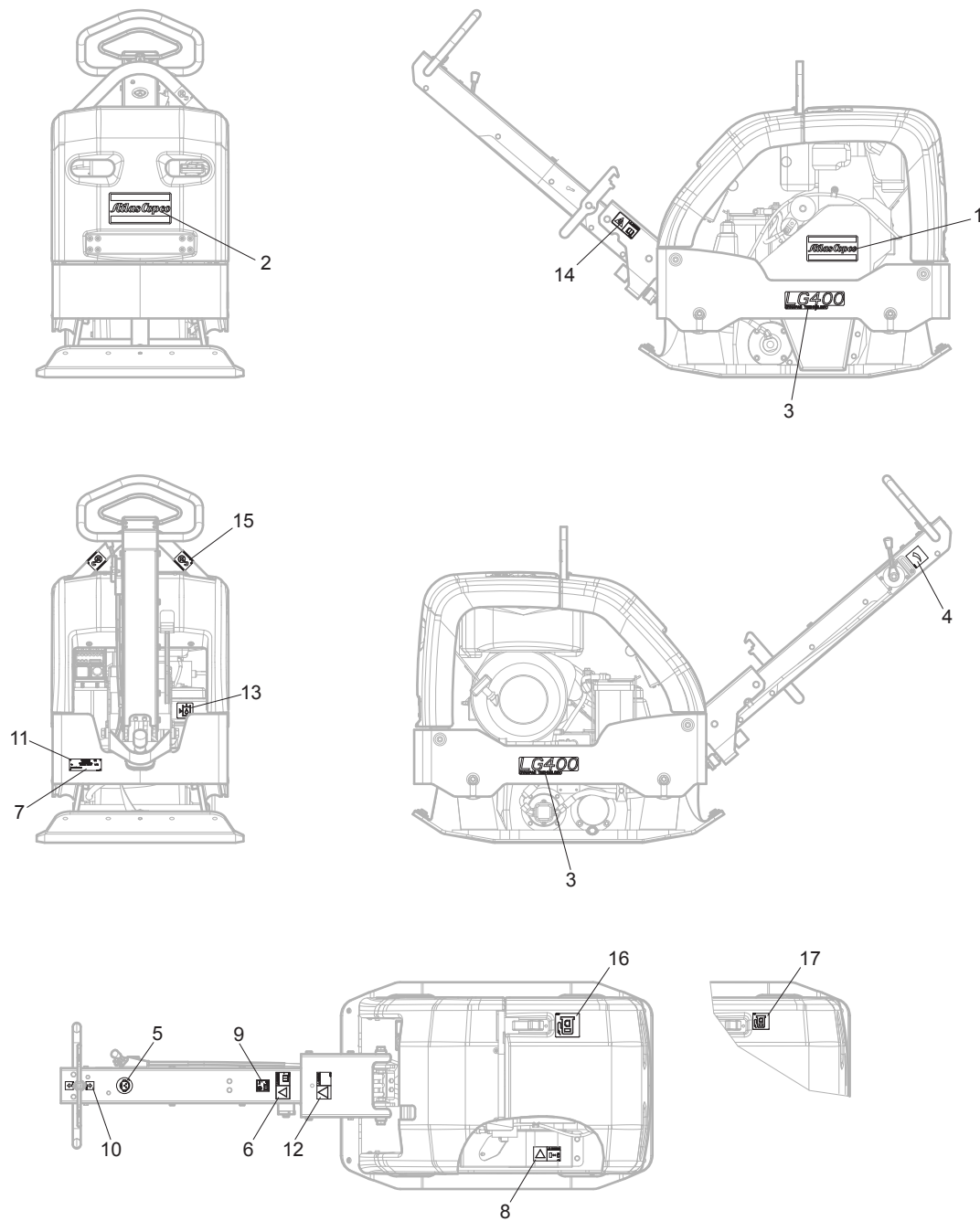
No.	Description	Remark	Quantity	Part number
1(2-3)	Throttle control, complete		1	4812 0702 63
2	Handle		1	4700 3971 14
3	Control cable		1	4812 0702 64
4	Screw	M5 x 30 mm A2-70	4	-
5	Bracket		1	4812 0701 15
6	Screw	M6 x 16 mm 8.8 A2K	1	-
7	Washer	6.4 x 12 x 1.5 mm 0.25 x 0.47 x 0.06 in. 300 HV	1	-
8	Nut	M6 x 1 mm A2K	1	-
9	Holder		1	4812 0702 92

## Throttle control, Lombardini



No.	Description	Remark	Quantity	Part number
1(2-3)	Throttle control, complete		1	4812 0702 65
2	Handle		1	4700 3971 14
3	Control cable		1	4812 0704 79
4	Screw	M5 x 30 mm A2-70	4	-
5	Bracket		1	4812 0701 15
6	Screw	M6 x 16 mm 8.8 A2K	1	-
7	Spacer		1	4700 3974 17
8	Nut	M6 x 1 mm A2K	2	-
9	Nipple		2	4700 2812 36
10	Nipple		1	4812 0702 82

## Labels



No.	Description	Remark	Quantity	Part number
1	Product label	"Atlas Copco"	1	3382 0100 60
2	Product label	"Atlas Copco"	1	3382 0100 22
3	Product Label	"LG 400"	2	3382 0100 61
4	Label	Engine speed	1	4700 2842 85
5	Label	Ear protection	1	4700 2818 98
6	Safety label	Read instruction manual	1	4700 9046 80
7	Data plate		1	-
8	Safety label	Rotating V-belts	1	4700 9038 32
9	Noise level label		1	4700 7912 96
10	Label	Direction	2	4700 2842 78
11	Drive screw		4	-
12	Safety label	Crush zone	1	4700 9047 85
13	Label	Hydraulic oil level	1	4700 2723 73
14	Safety label	Lock handle	1	4700 9082 29
15	Label	Lift point	2	4700 3575 87
16	Label	Diesel fuel	1	4700 9916 58
17	Label	Petrol fuel	1	4700 3813 71

# Kits

## One year service kit, Honda

### One year service kit

Part number 3382 1000 53

Description	Remark	Quantity	Part number
Air filter		5	3382 1000 55
Gasket	For oil drain plug.	1	3382 1000 58
Starting rope		1	3382 1000 56
Spark plug		1	3382 1000 54
V-belt	See section "Engine installation".	2	4812 0704 78
Gasket	For valve cover.	1	3382 1000 57

## One year service kit, Lombardini

### One year service kit

Part number 3382 1000 27

Description	Remark	Quantity	Part number
Air filter		5	3382 1000 48
Fuel filter		5	3382 1000 47
Gasket	For oil filter cover.	1	3382 1000 50
V-belt	See section "Engine installation".	2	4700 9047 76
Gasket	For valve cover.	1	3382 1000 51
Oil filter		5	3382 1000 49

## Shock absorber repair kit

Description	Remark	Quantity	Part number
<b>Shock absorber repair kit</b>		1	3382 1000 32
Shock absorber	For ground plate. See section "Ground plate and eccentric element installation".	4	4700 2804 54
Nut	M16 A3K See section "Ground plate and eccentric element installation".	8	-
Washer	13 x 30 x 4 mm 0.51 x 1.18 x 0.16 in. 300 HV See section "Ground plate and eccentric element installation".	8	-
Shock absorber	For handle. See section "Handle".	4	3382 0101 83
Screw	M10 x 14 mm 8.8 A3K See section "Handle".	8	-
Washer	10.5 x 22 x 2 mm 0.41 x 0.87 x 0.08 in. 300 HV See section "Handle".	8	-
Shock absorber	See section "Handle".	1	4700 7928 33
Shock absorber	See section "Handle".	1	4700 7928 32
Nut	M16 A3K See section "Handle".	2	-
Shock absorber	For hook. See section "Handle".	1	4700 3853 87
Screw	M10 x 20 mm 8.8 A3K See section "Handle".	1	-
Washer	13 x 30 x 4 mm 0.51 x 1.18 x 0.16 in. 300 HV See section "Handle".	2	-
Washer	10.5 x 22 x 2 mm 0.41 x 0.87 x 0.08 in. 300 HV See section "Handle".	1	-

## Eccentric element repair kit

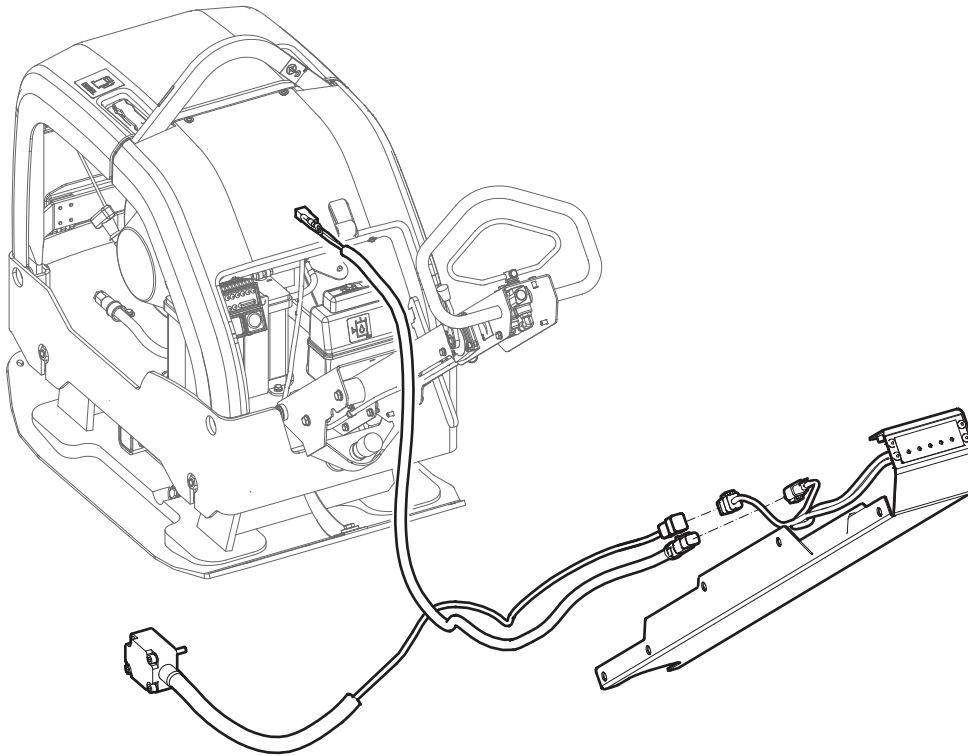
Description	Remark	Quantity	Part number
<b>Eccentric element repair kit</b>		1	3382 1000 37
Sealing	See section "Eccentric element".	1	4700 9287 94
Ball bearing	See section "Eccentric element".	4	4700 9287 86
Washer	6.4 x 12 x 1.5 mm 0.25 x 0.47 x 0.06 in. 300 HV See section "Eccentric element".	16	-
Screw	M6 x 20 mm 8.8 A2K See section "Eccentric element".	16	-
Copper washer	16.7 x 24 x 1.5 mm 0.66 x 0.94 x 0.06 in. TYPE A, M16 See section "Eccentric element".	1	-
Retainer ring	See section "Eccentric element".	1	4700 9287 87
Sealing compound		1	4700 9299 06
Ball bearing	See section "Eccentric element".	2	4700 9287 96

## Forward and reverse piston repair kit

Description	Remark	Quantity	Part number
<b>Forward and reverse piston repair kit</b>		1	3382 1000 35
Sealing	See section "Eccentric element".	1	4700 2812 76
Piston rod	See section "Eccentric element".	1	4812 0700 44
Retainer ring	See section "Eccentric element".	1	4700 1510 39
Ball bearing	See section "Eccentric element".	1	4812 0703 59
Retainer ring	See section "Eccentric element".	1	4700 1500 02
Ball bearing	See section "Eccentric element".	1	4812 0703 62
Spring washer	See section "Eccentric element".	1	4812 0703 63
Cylinder	See section "Eccentric element".	1	4812 0700 42
Spirol pin	See section "Eccentric element".	1	4700 6290 62
Washer	6.4 x 12 x 1.5 mm 0.25 x 0.47 x 0.06 in. 300 HV See section "Eccentric element".	4	-
Screw	M6 x 20 mm 8.8 A2K See section "Eccentric element".	4	-



## Compaction indicator kit



Description	Remark	Quantity	Part number
<b>Compaction indicator kit</b>		1	4812 0796 91
Compaction indicator	Mounted on the eccentric element	1	-
Compaction indicator display		1	-
Wiring harness		1	-
Screw	M6 x 40 mm 8.8 A2K	4	-
Washer	6.4 x 12 x 1.5 mm 0.25 x 0.47 x 0.06 in. 300 HV	4	-
Pipe clamp		1	-
Pipe clamp		3	-
Pipe clamp		3	-
Nut	M5 A2K	4	-
Screw	M5 x 14 A2-70	4	-
Sealing compound		1	-
Lock fluid		1	-
Cable tie		8	-





