

# MB 1200, 1200 DP

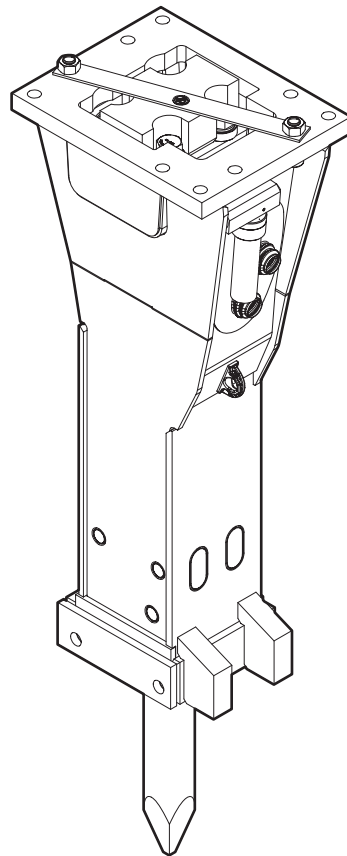
---

## Spare parts list

### Hydraulic breakers

MB 1200 s/n DEQ170746 -

MB 1200 DP s/n DEQ170746 -



# General information

This spare parts list applies to the following:

Part number	Description
3363090441	Hydraulic breaker MB 1200
3363090443	Hydraulic breaker MB 1200 DP

Use only authorized parts. Any damage or malfunction caused by the use of unauthorized parts is not covered by Warranty or Product Liability. Any unauthorized use or copying of the contents or any part thereof is prohibited. This applies in particular to trademarks, model denominations, part numbers, and drawings.

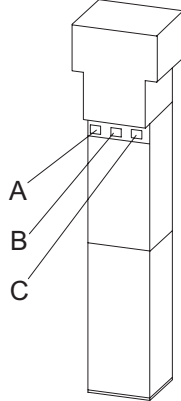
### Instructions for use

This spare parts list contains no safety regulations and is merely intended to assist in the ordering of spare parts. For information about operating, servicing, or repairing, the relevant Safety and operating instructions must be consulted at all costs. Please observe the safety instructions listed in the relevant Safety and operating instructions!

### Instructions for ordering

It is essential to indicate the serial number of the hydraulic attachment when ordering spare parts! Please note the full identification number of your hydraulic attachment. The code can be found on the cylinder. Determine the quantity of individual parts which are required and need to be ordered. The order must indicate the following details:

- full identification code of the hydraulic attachment
- required quantity
- part number
- description



- A. Cylinder number
- B. Type
- C. Serial number

## Contents

### Service, repair and wear part kits

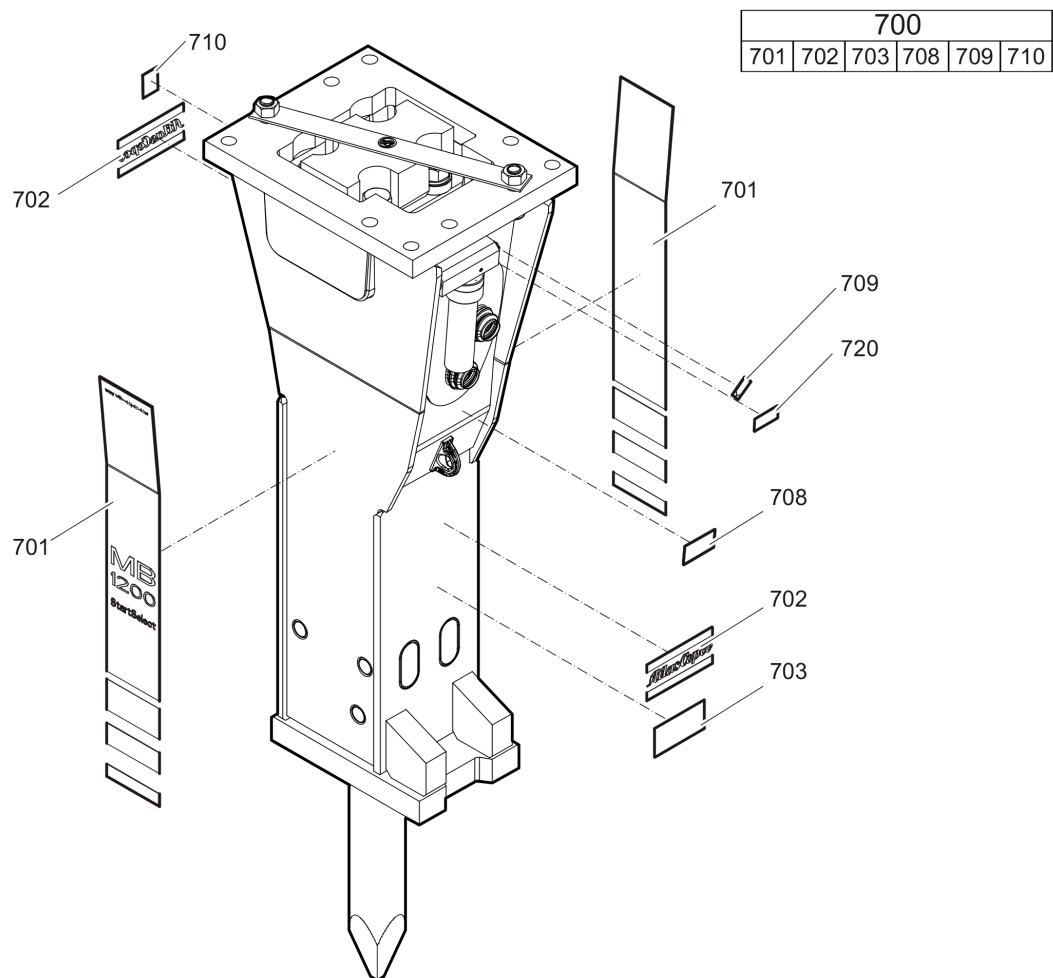
Label kit MB 1200	1
Label kit MB 1200 DustProtector	3
Kit list	5

### Mechanical

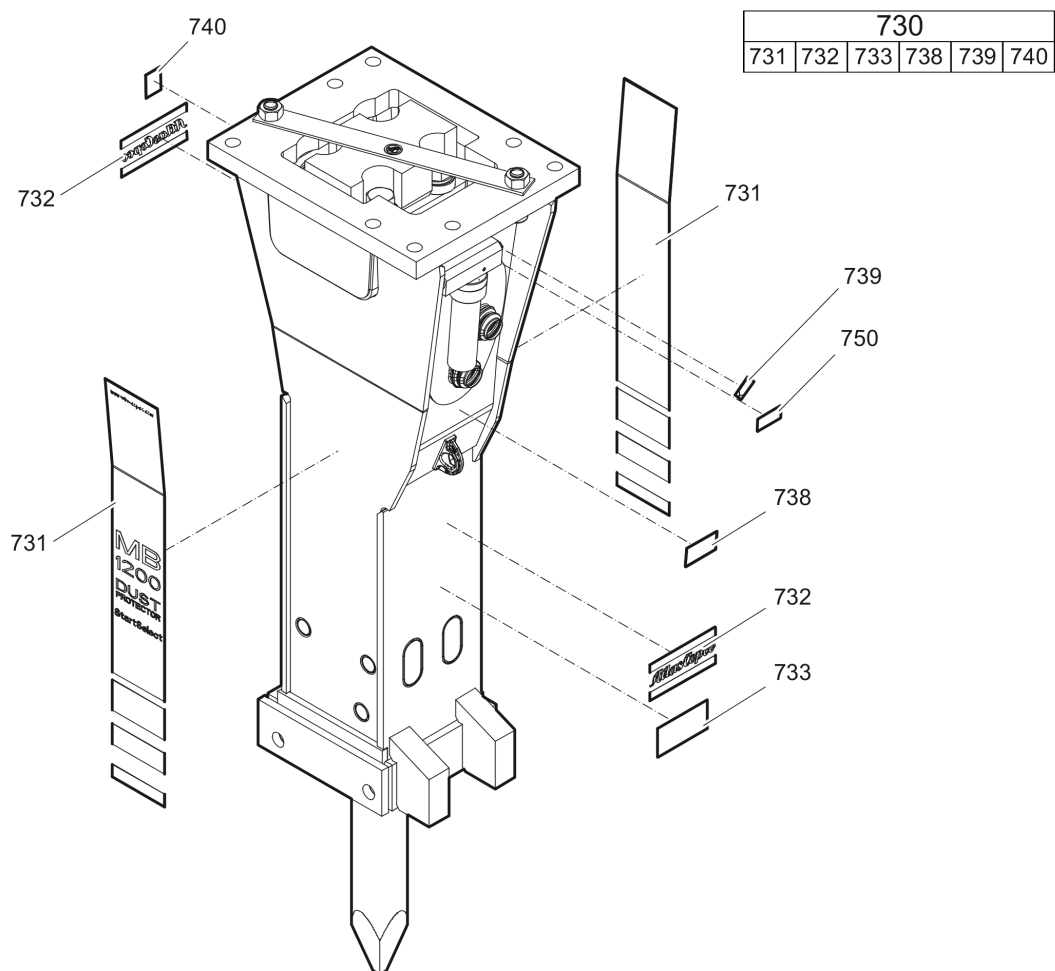
Hydraulic breaker MB 1200	8
Hydraulic breaker MB 1200 DustProtector	11
Percussion unit part 1: cylinder cover	13
Percussion unit part 2: cylinder	15
Percussion unit part 3: lower breaker part	17
Connecting kit for automatic lubrication system	19
StartSelect - AutoStart or AutoStop	21
Optional parts	23
Tightening torques	25
Dimensions MB 1200	27
Dimensions MB 1200 DustProtector	28

### Options / accessories

Hydraulic hoses	30
Optional equipment	33
Working tools ClassicLine MB 1200	35
Working tools ClassicLine MB 1200 DP	37

**Service, repair and wear part kits** Label kit MB 1200

Item	Part No.	Name	Qty	L
700(701-710)	3363094308	Label kit MB 1200	1	
701		Product label "MB 1200"	2	
702		Label - Atlas copco logo	2	
703		Label working tools	1	
708		Label - Gas pressure	2	
709		Label - Lubricating symbol	1	
710		Sound power label	1	
720		Name plate - Consult the Atlas Copco Customer Center/Dealer in your area.	1	

**Service, repair and wear part kits** Label kit MB 1200 DustProtector

Item	Part No.	Name	Qty	L
730(731-740)	3363094309	Label kit MB 1200 DP	1	
731		Product label "MB 1200 DP"	2	
732		Label - Atlas copco logo	2	
733		Label working tools	1	
738		Label - Gas pressure	2	
739		Label - Lubricating symbol	1	
740		Sound power label	1	
750		Name plate - Consult the Atlas Copco Customer Center/Dealer in your area.	1	

---

**Service, repair and wear part kits** Kit list

NO EXPLODED VIEW  
AVAILABLE  
FOR THIS BOM



Item	Part No.	Name	Qty	L
KIT	3363116188	Seal kit	1	
120	3363066653	O-ring	1	
122	3363066654	Seal	1	
123	3363034029	Seal	2	
124	3363034033	O-ring	2	
182	3360478426	Threaded plug	1	
183	3360175125	O-ring	1	
303	3360314495	O-ring	2	
305	3363066656	Wiper	1	
315	3360478171	O-ring	1	
325	3363110075	Seal	2	
396	3360314551	O-ring	2	
602	3363083245	O-ring	1	
KIT	3363070126	Plastic parts kit	1	
2	3363033957	Elastic pad	1	
3	3361847685	Shock absorber	2	
4	3362269631	Guide plate	2	
5	3363067919	Guide plate	1	
6	3363067921	Guide plate	2	
KIT	3363094349	Tensioning bolt kit	1	A
191		Tensioning bolt	2	
192	3363093647	Washer	2	
487	3363031774	Threaded insert	2	
KIT	3363094385	DustProtector kit	1	
11	3363070660	Floating ring (tribolid)	1	
12	3363067969	Counter ring	1	
13	3363067973	Guide ring	1	
14	3363069769	Bolt	2	
15	3361854363	Locking bush	2	
KIT	3363098060	Noise protection kit	1	
31	3363068295	Cover	1	
32	3363086011	Plug	2	
33	3362267897	Plug	10	
34	3362267893	Plug	1	
KIT	3363094369	Lower breaker part kit (steel)	1	
401	3360993029	Retainer bar	2	
402	3362261850	Bolt	2	

Refer to Parts Online for the most up to date information. The printed information might be outdated.

Tue May 16 08:52:36 UTC 2017

Item	Part No.	Name	Qty	L
403	3362262925	Plug	4	
482	3363069073	Impact ring	1	
483	3363069353	Wear bush	1	
484	3363088669	Wear bush (steel)	1	
485	3362261850	Bolt	2	
486	3361854363	Locking bush	4	
-	3315038100	Chisel paste cartridge, 400 g 0.88 lb	1	
-	3363068255	Test gauge lower wear bush	1	
KIT	3363094370	Lower breaker part kit (steel) for DustProtector version	1	
18	3363088663	Base for wiper	1	
19	3363066569	Wiper	1	
401	3360993029	Retainer bar	2	
402	3362261850	Bolt	2	
403	3362262925	Plug	4	
482	3363069073	Impact ring	1	
483	3363069353	Wear bush	1	
484	3363088669	Wear bush (steel)	1	
485	3362261850	Bolt	2	
486	3361854363	Locking bush	4	
-	3315038100	Chisel paste cartridge, 400 g 0.88 lb	1	
-	3363068255	Test gauge lower wear bush	1	

Comments for Page: Kit list

A | You need Anti-Seize agent when fitting tensioning bolts. You have to order it separately.

Anti-seize 120 g, part number 3363094300

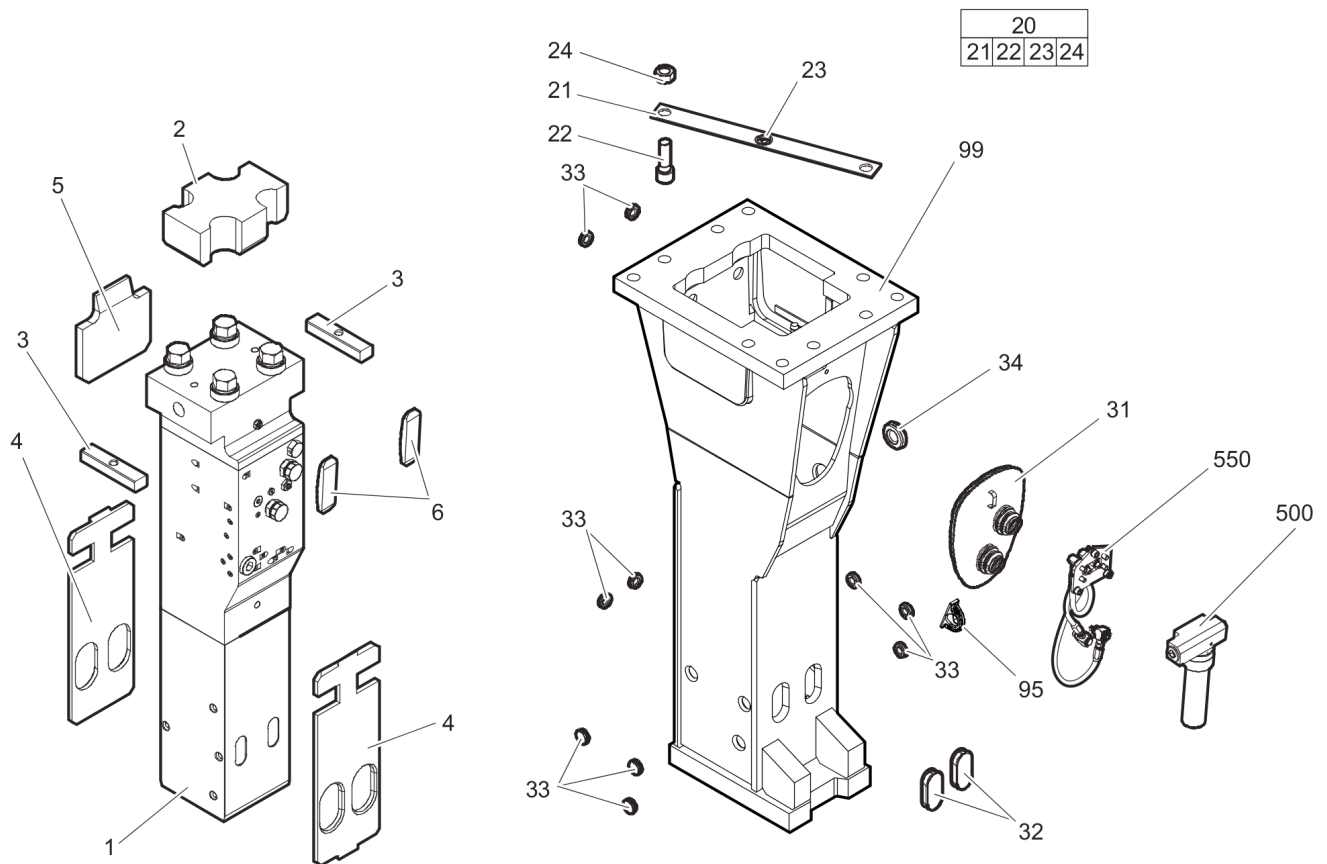
Or buy it locally according to the following specification:

coefficient of friction 0.14  $\mu$

coefficient of friction thread 0.13  $\mu$

coefficient of friction on upside down 0.15  $\mu$

This page intentionally left blank

**Mechanical** Hydraulic breaker MB 1200

Item	Part No.	Name	Qty	L
1		Percussion unit	1	A
2	3363033957	Elastic pad	1	
3	3361847685	Shock absorber	2	
4	3362269631	Guide plate	2	
5	3363067919	Guide plate	1	
6	3363067921	Guide plate	2	
20(21-24)	3363083416	Transport safety device complete	1	
21		Transport safety device	1	
22	3360026883	Allen screw	2	
23	3363091872	Label transport safety device	1	
24	3360103254	Nut	2	
31	3363068295	Cover	1	
32	3363086011	Plug	2	
33	3362267897	Plug	10	
34	3362267893	Plug	1	
95	3363111993	Lifting eye	1	B
99	3363098858	Breaker box	1	
500	3363067123	Automatic lubrication system	1	C
550		Connecting kit for automatic lubrication system	1	A

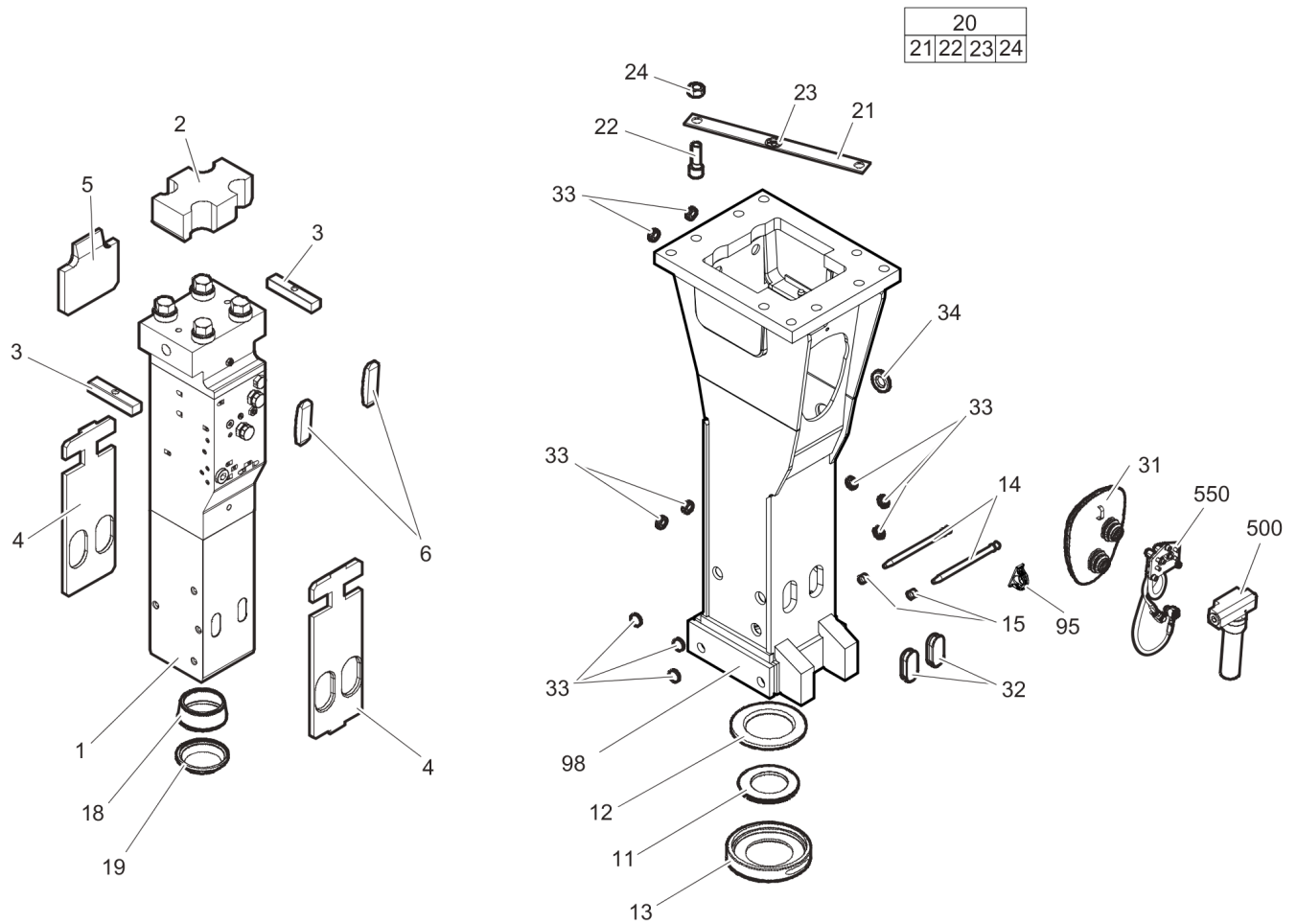
Comments for Page: Hydraulic breaker MB 1200

#### (L)OCAL REMARKS

A | see separate chapter

B | professional welding process necessary

C | see separate Safety and operating instructions

**Mechanical** Hydraulic breaker MB 1200 DustProtector

Refer to Parts Online for the most up to date information. The printed information might be outdated.

Tue May 16 08:52:38 UTC 2017

Item	Part No.	Name	Qty	L
1		Percussion unit	1	A
2	3363033957	Elastic pad	1	
3	3361847685	Shock absorber	2	
4	3362269631	Guide plate	2	
5	3363067919	Guide plate	1	
6	3363067921	Guide plate	2	
11	3363070660	Floating ring (tribolid)	1	B
12	3363067969	Counter ring	1	
13	3363067973	Guide ring	1	
14	3363069769	Bolt	2	
15	3361854363	Locking bush	2	
18	3363088663	Base for wiper	1	
19	3363066569	Wiper	1	
20(21-24)	3363083416	Transport safety device complete	1	
21		Transport safety device	1	
22	3360026883	Allen screw	2	
23	3363091872	Label transport safety device	1	
24	3360103254	Nut	2	
31	3363068295	Cover	1	
32	3363086011	Plug	2	
33	3362267897	Plug	10	
34	3362267893	Plug	1	
95	3363111993	Lifting eye	1	C
98	3363098859	Breaker box	1	
500	3363067123	Automatic lubrication system	1	D
550		Connecting kit for automatic lubrication system	1	E

Comments for Page: Hydraulic breaker MB 1200 DustProtector

(L)OCAL REMARKS

A | see separate chapter

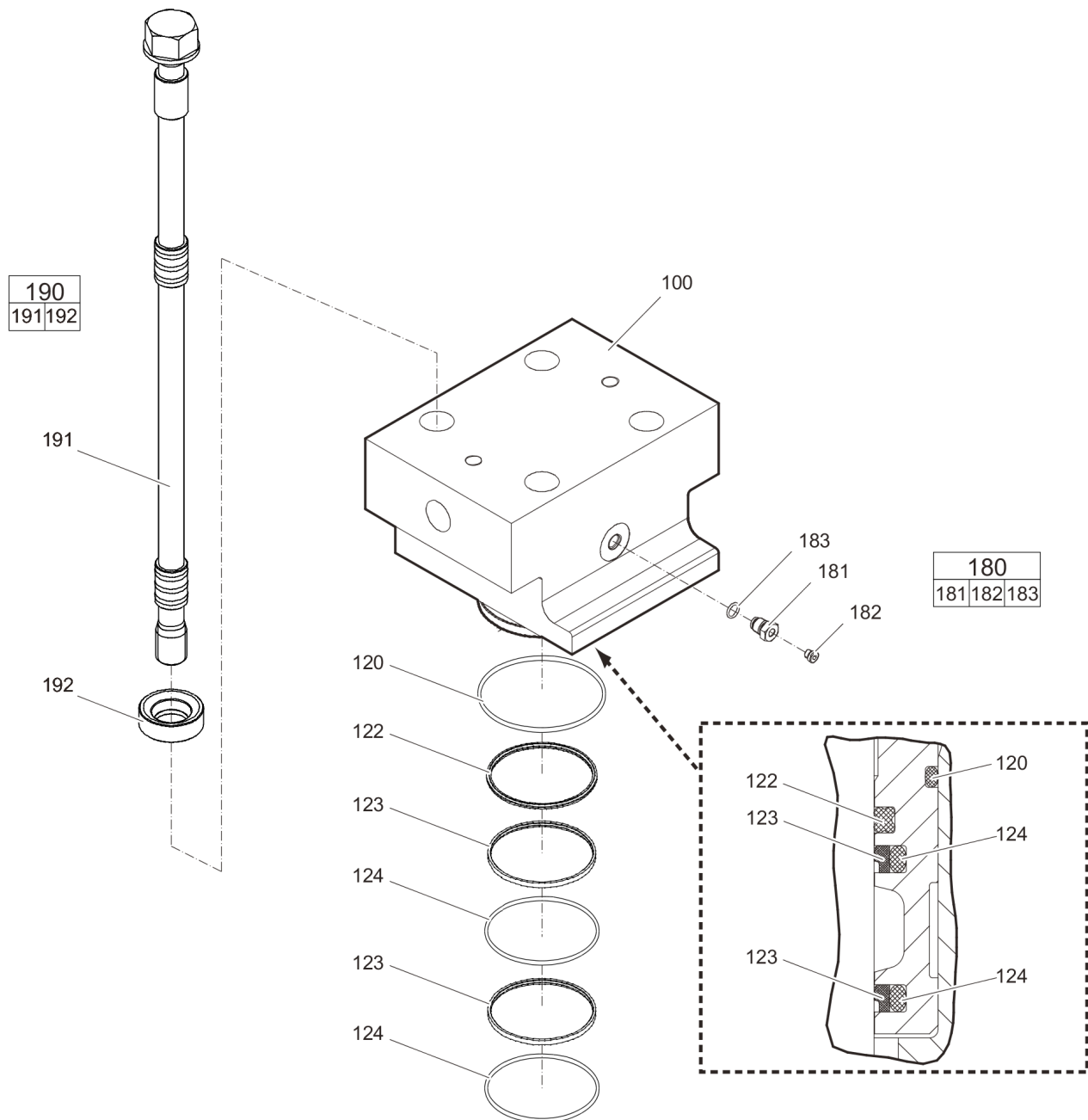
Note: When ordering a percussion unit for DustProtector version it is imperative to order additionally the base for wiper (item 18) and the wiper (item 19).

B | steel see chapter Optional parts

C | professional welding process necessary

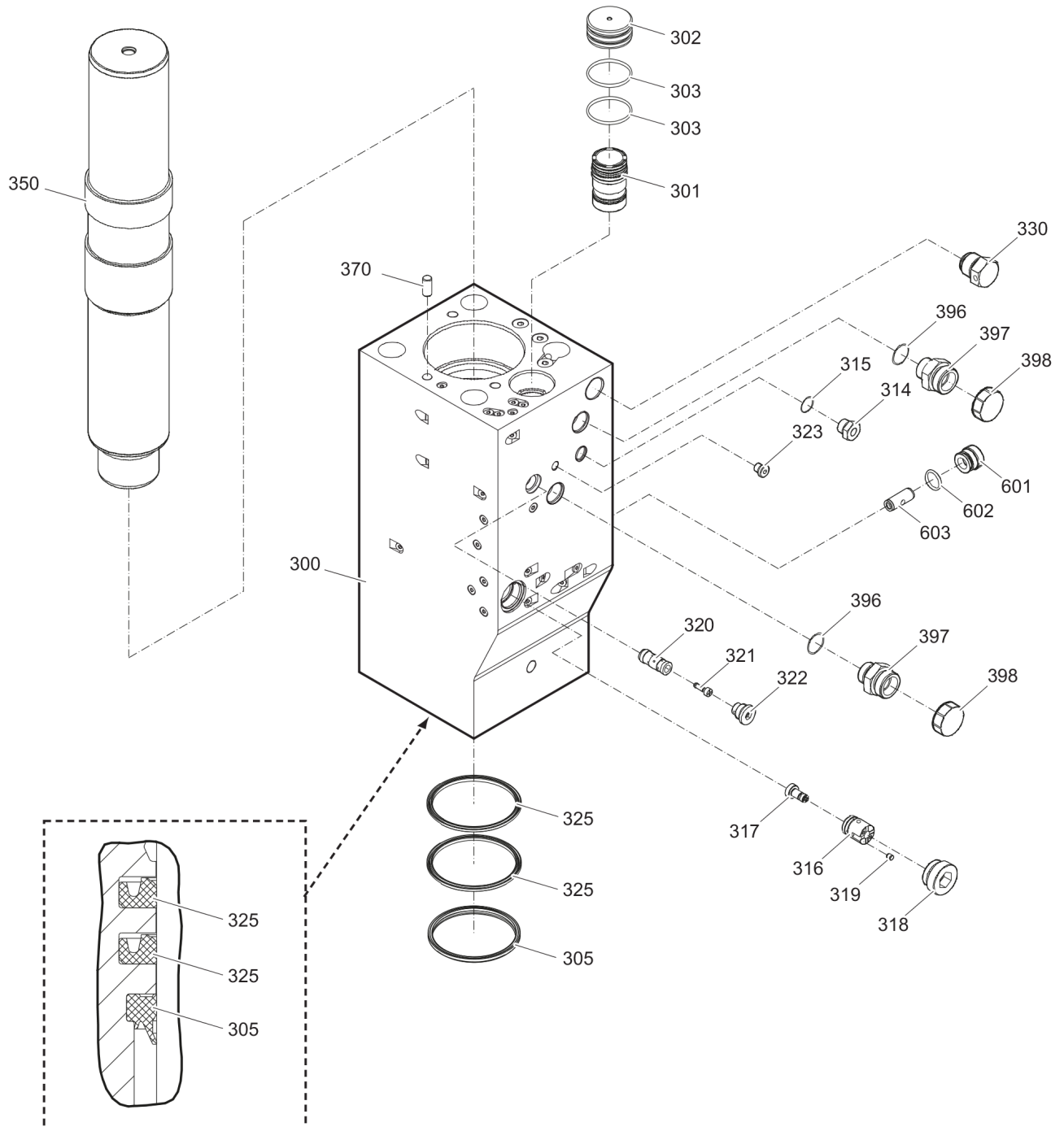
D | see separate Safety and operating instructions

E | see separate chapter

**Mechanical** Percussion unit part 1: cylinder cover



Item	Part No.	Name	Qty	L
100	3363033753	Cylinder cover	1	
120	3363066653	O-ring	1	
122	3363066654	Seal	1	
123	3363034029	Seal	2	
124	3363034033	O-ring	2	
180(181-183)	3363087286	Filling valve complete	1	
181		Filling valve	1	
182	3360478426	Threaded plug	1	
183	3360175125	O-ring	1	
190(191-192)	3363087908	Tensioning bolt complete	4	
191		Tensioning bolt	1	
192	3363093647	Washer	1	

**Mechanical** Percussion unit part 2: cylinder

Item	Part No.	Name	Qty	L
300	3363119814	Cylinder	1	A
301	3363033751	Main control valve	1	
302	3363119841	Cover	1	
303	3360314495	O-ring	2	
305	3363066656	Wiper	1	
314	3361854657	Connecting screw	1	
315	3360478171	O-ring	1	
316	3363067803	Valve bushing	1	B
317	3363067805	Valve piston	1	B
318	3363069501	Threaded plug	1	
319	3363066197	Pin	1	B
320	3363033059	Valve housing	1	B
321	3363105305	Valve piston	1	B
322	3363033749	Threaded plug	1	
323	3363066963	Plug, M14 x 1.5 mm	1	
325	3363110075	Seal	2	
330	3361854511	Non-return valve	1	
350	3363086279	Percussion piston	1	
370	3360106784	Parallel pin 14X28	1	
396	3360314551	O-ring	2	
397	3360995665	Fitting	2	C
398	3361353488	Protective cap	2	
601	3363082593	Plug	1	
602	3363083245	O-ring	1	
603	3363082505	Valve	1	D

Comments for Page: Percussion unit part 2: cylinder

(L)OCAL REMARKS

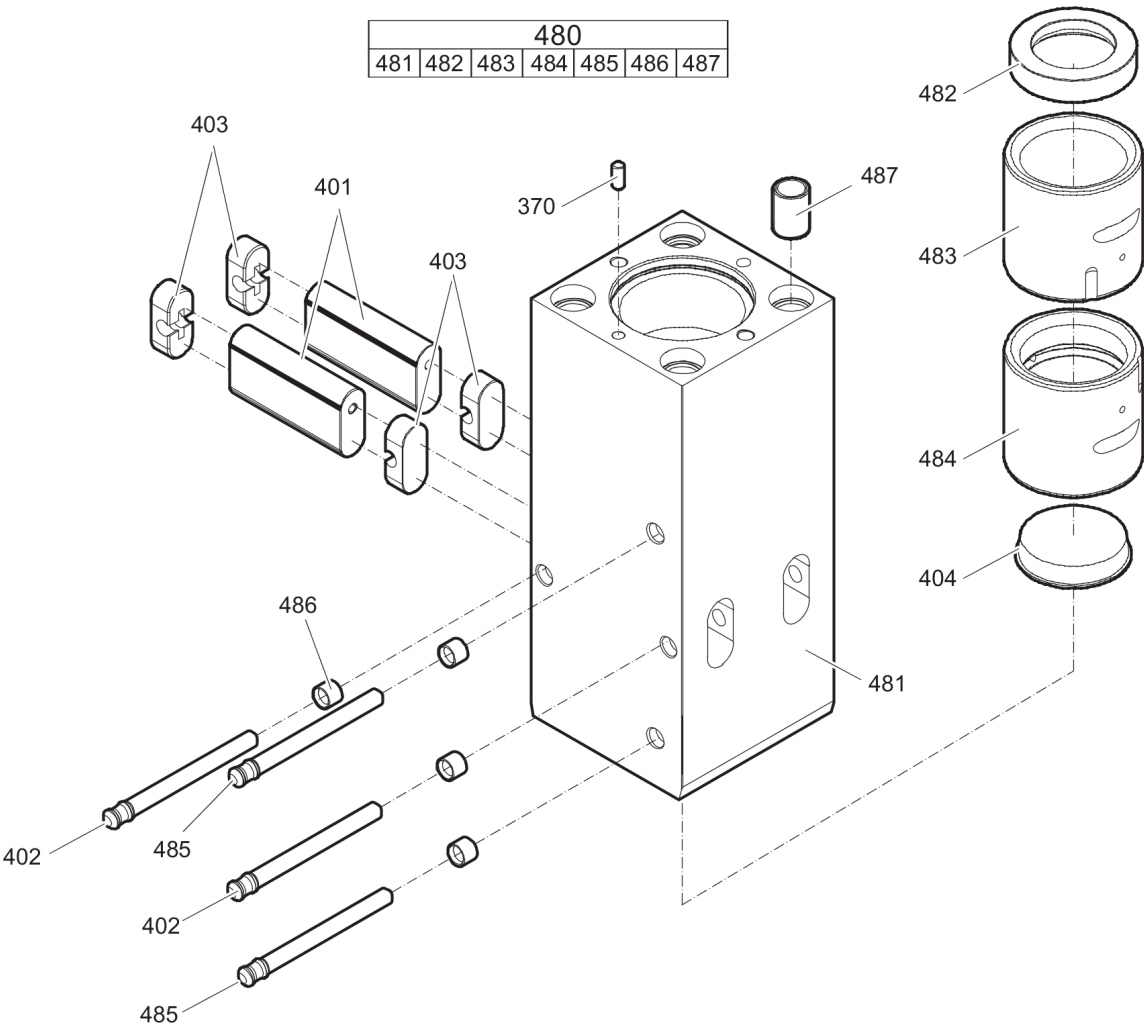
A | with items 601 - 603

B | AutoControl

C | with item 396

D | StartSelect

**Mechanical** Percussion unit part 3: lower breaker part



Item	Part No.	Name	Qty	L
370	3360106784	Parallel pin 14X28	1	
401	3360993029	Retainer bar	2	
402	3362261850	Bolt	2	
403	3362262925	Plug	4	
404	3363031715	Protective cap	1	
480(481-487)	3363089505	Lower breaker part complete	1	A
481		Lower breaker part	1	
482	3363069073	Impact ring	1	
483	3363069353	Wear bush	1	
484	3363088669	Wear bush (steel)	1	B
485	3362261850	Bolt	2	
486	3361854363	Locking bush	4	
487	3363031774	Threaded insert	4	

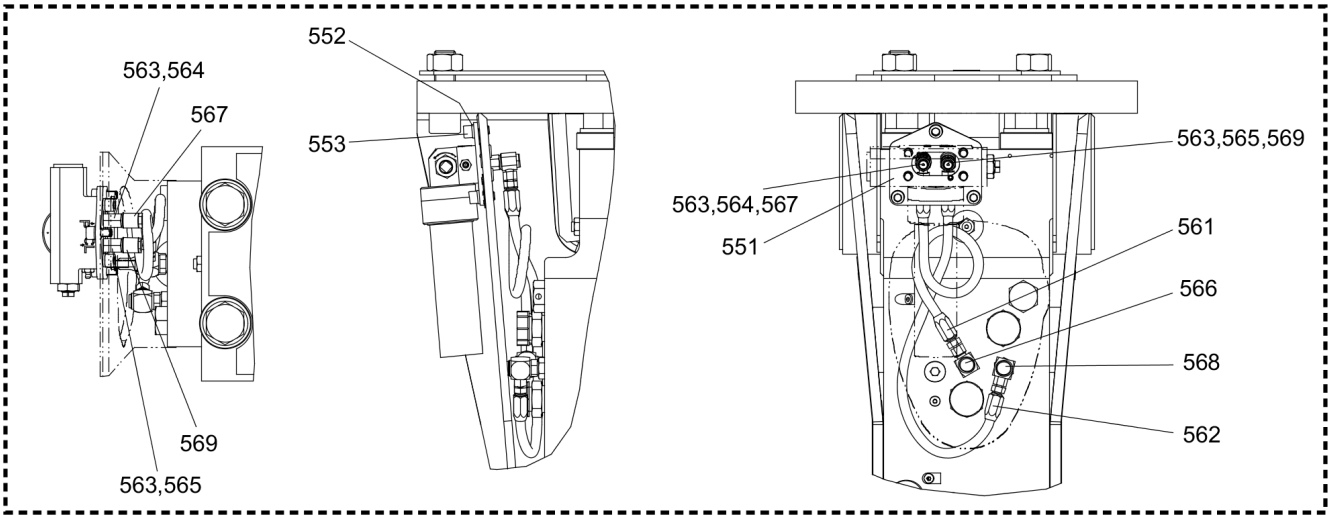
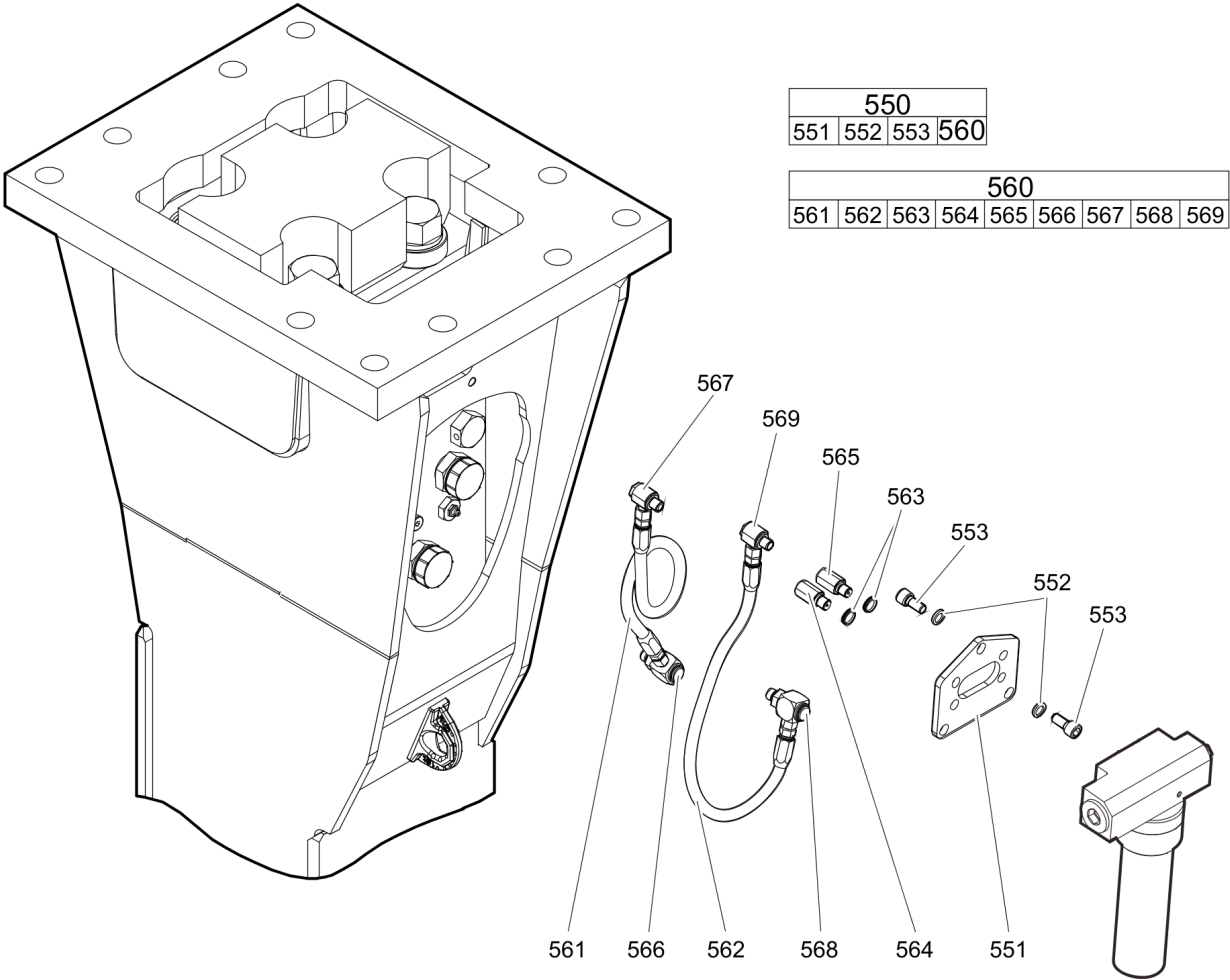
Comments for Page: Percussion unit part 3: lower breaker part

(L)OCAL REMARKS

A | Note: When ordering a lower breaker part for DustProtector version it is imperative to order additionally the base for wiper (item 18) and the wiper (item 19).

B | bronze see chapter Optional parts

**Mechanical** Connecting kit for automatac lubrication system



Item	Part No.	Name	Qty	L
550(551-560)		Connecting kit for automatic lubrication system	1	
551	3363067931	Support	1	
552	3361850596	Pair of lock washers	7	
553	3360103750	Allen screw	7	A
560(561-569)	3363118065	Connecting kit for automatic lubrication system	1	B
561	3363083879	Hydraulic hose	1	C
562	3363083874	Hydraulic hose	1	D
563	3363066951	Seal	2	
564	3363068745	Adapter	1	E
565	3363066887	Adapter	1	E
566	3363087185	Fitting	1	E
567	3363066234	Fitting	1	E
568	3363087186	Fitting	1	E
569	3363066233	Fitting	1	E

Comments for Page: Connecting kit for automatic lubrication system

#### (L)OCAL REMARKS

A | secure all 4 allen screws with Loctite 243 screwed in the ContiLube® II

B | without fastening elements

C | Oil line

secure with Loctite 243

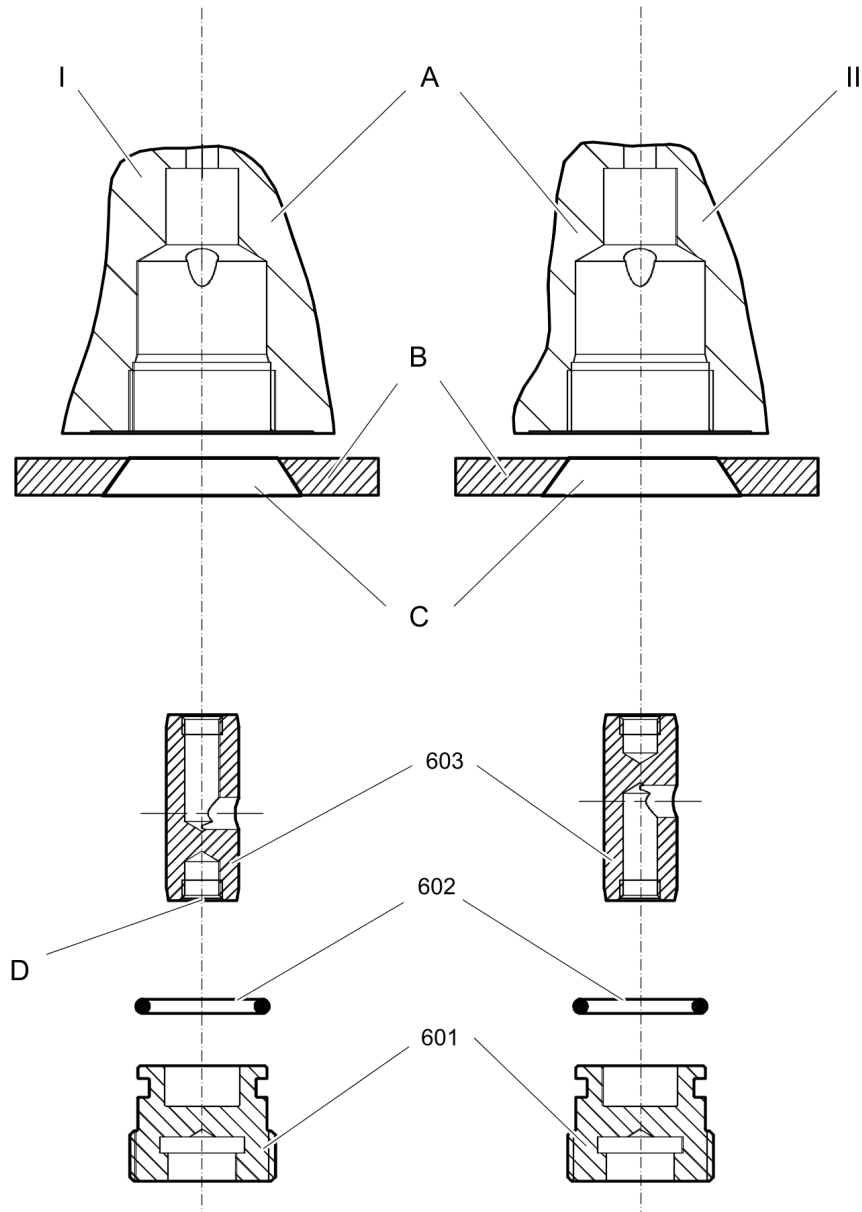
Route the hydraulic hoses as shown on the drawing. It must be ensured that the hydraulic hoses can move freely and are not in contact at any point.

D | Grease line

secure with Loctite 243

Route the hydraulic hoses as shown on the drawing. It must be ensured that the hydraulic hoses can move freely and are not in contact at any point.

E | secure with Loctite 243

**Mechanical** StartSelect - AutoStart or AutoStop



Item	Part No.	Name	Qty	L
601	3363082593	Plug	1	
602	3363083245	O-ring	1	
603	3363082505	Valve	1	A

Comments for Page: StartSelect - AutoStart or AutoStop

I = AutoStop setting

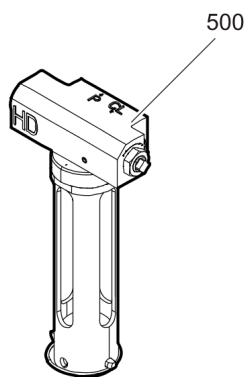
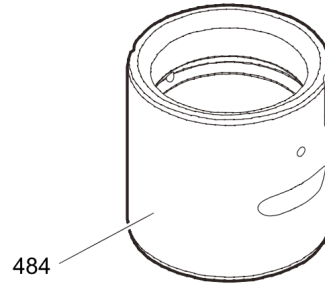
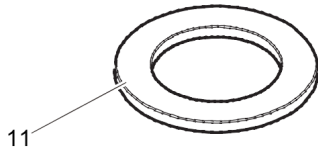
II = AutoStart setting (standard setting on delivery)

- A. Port bore in cylinder
- B. Wall of breaker box
- C. Plug of breaker box
- D. M 10 thread (both ends) for mounting

The position of the StartSelect unit is shown on the percussion unit illustrations.

(L)OCAL REMARKS

A | StartSelect

**Mechanical** Optional parts

Item	Part No.	Name	Qty	L
11	3363067971	Floating ring (steel)	1	
484	3363088665	Wear bush (bronze)	1	
500	3363117931	Automatic lubrication system HD	1	

---

**Mechanical** Tightening torques

NO EXPLODED VIEW  
AVAILABLE  
FOR THIS BOM

Item	Part No.	Name	Qty	L
181	-	Filling valve - 130 Nm (96 ft lbf)	-	A
182	-	Threaded plug - 20 Nm (15 ft lbf)	-	B
191	-	Tensioning bolt -	-	C
314	-	Threaded plug - 300 Nm (221 ft lbf)	-	D
318	-	Threaded plug - 350 Nm (258 ft lbf)	-	E
322	-	Threaded plug - 100 Nm (74 ft lbf)	-	F
330	-	Non-return valve - 200 Nm (148 ft lbf)	-	G
553	-	Allen screw - 85 Nm (63 ft lbf)	-	H
561	-	Hydraulic hose oil line - 42 Nm (31 ft lbf)	-	I
562	-	Hydraulic hose grease line - 16 Nm (12 ft lbf)	-	J
564	-	Adapter - 55 Nm (41 ft lbf)	-	I
565	-	Adapter - 45 Nm (33 ft lbf)	-	I
566	-	Fitting - 60 Nm (44 ft lbf)	-	K
567	-	Fitting - 55 Nm (41 ft lbf)	-	L
568	-	Fitting - 50 Nm (37 ft lbf)	-	M
569	-	Fitting - 45 Nm (33 ft lbf)	-	N
601	-	Plug - 200 Nm (148 ft lbf)	-	O

Comments for Page: Tightening torques

(L)OCAL REMARKS

A | Socket spanner size 22

B | Allen key size 5

C | Torque wrench or Power wrench size 55

1. Pretighten the tensioning bolts to 500 Nm (369 ft lbf), proceeding in a crosswise fashion,
2. then tighten each tensioning bolt through 120° (2 sides of hexagonal head) in a crosswise fashion,
3. finally tighten each tensioning bolt again through 120° (2 sides of hexagonal head) in a crosswise fashion.

D | Allen key size 22

E | Allen key size 24

F | Allen key size 12

G | Socket spanner size 41

H | Allen key size 10

I | Open-ended wrench size 19

J | Open-ended wrench size 17

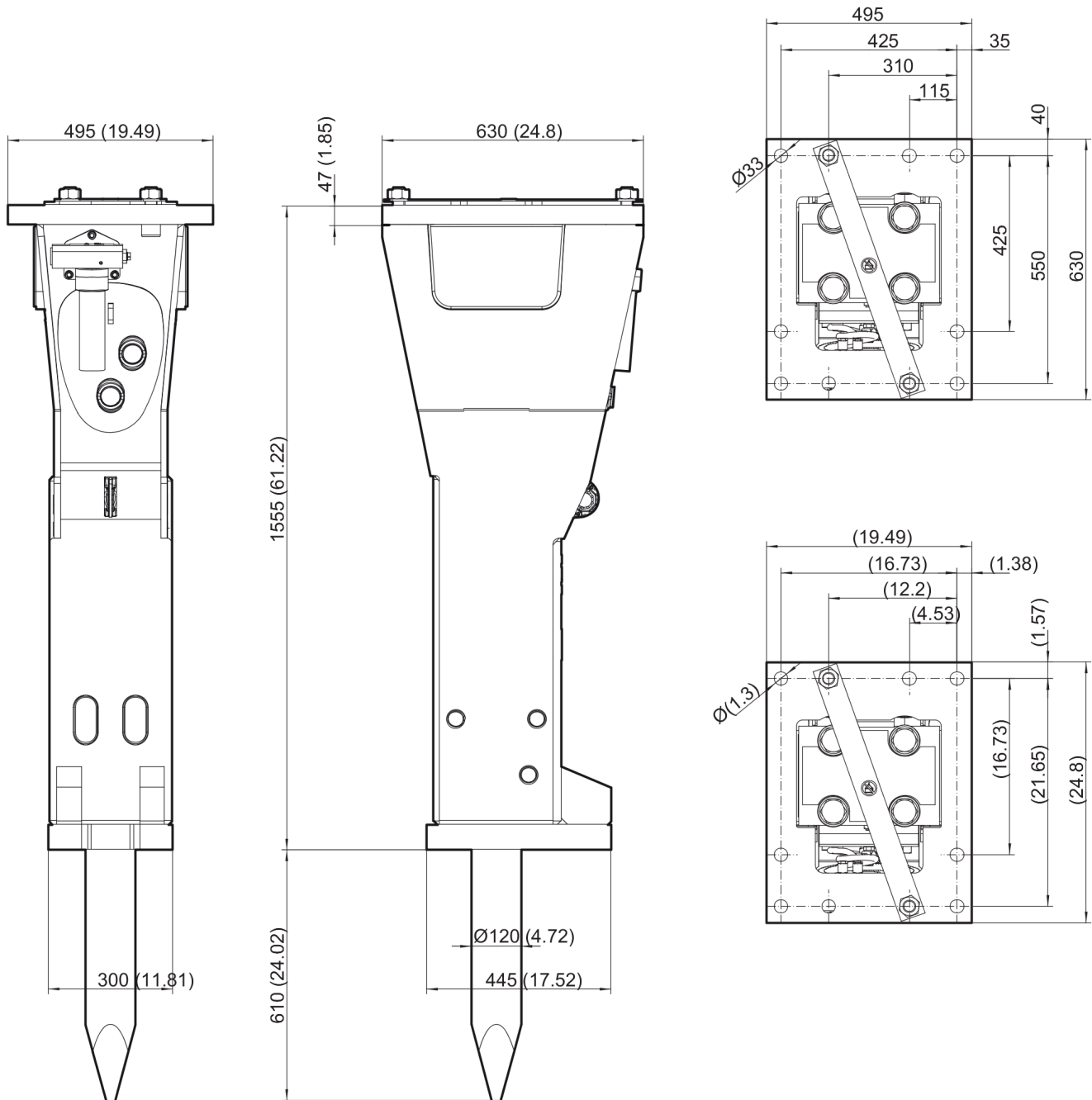
K | Open-ended wrench size 19, 22, 27

L | Open-ended wrench size 19, 22

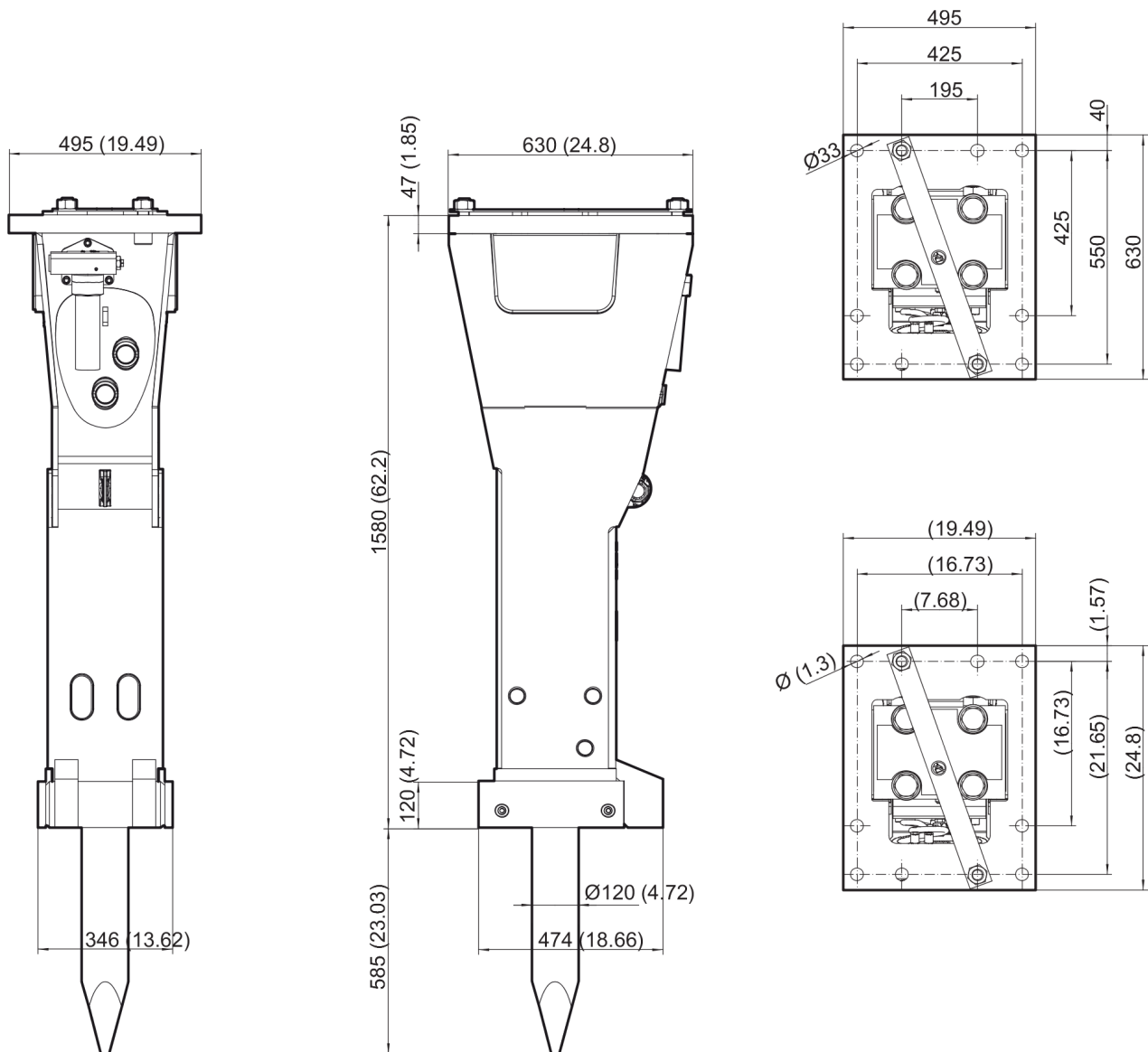
M | Open-ended wrench size 17, 22, 27

N | Open-ended wrench size 17, 19, 22

O | Allen key size 17

**Mechanical** Dimensions MB 1200

This page intentionally left blank

**Mechanical** Dimensions MB 1200 DustProtector



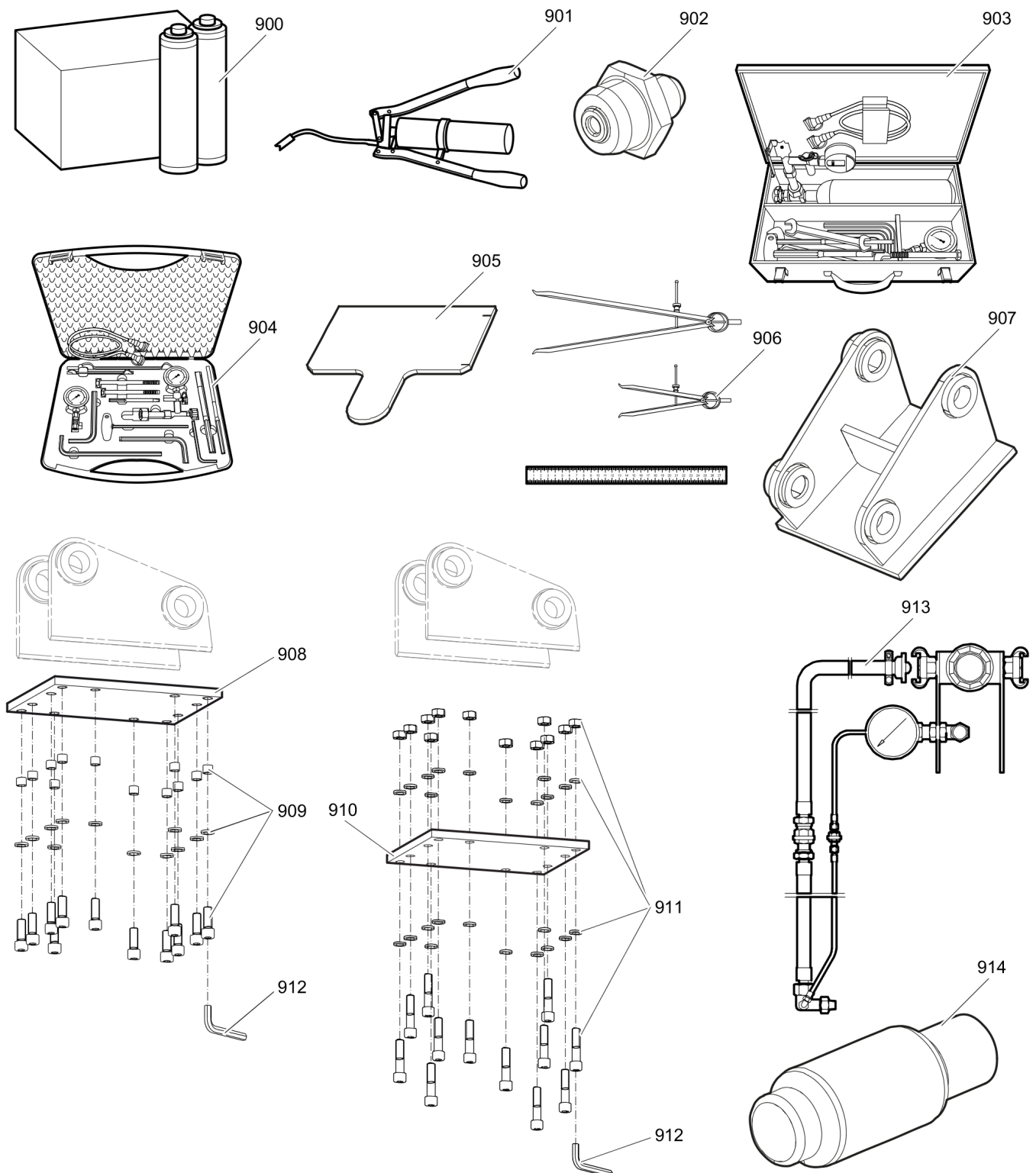
This page intentionally left blank

---

**Options / accessories** Hydraulic hoses

NO EXPLODED VIEW  
AVAILABLE  
FOR THIS BOM

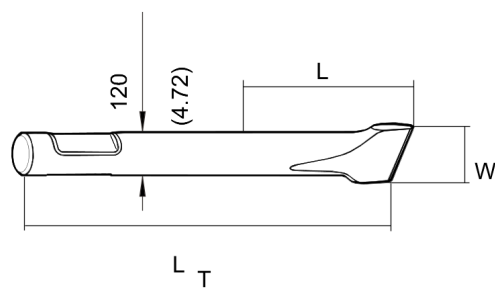
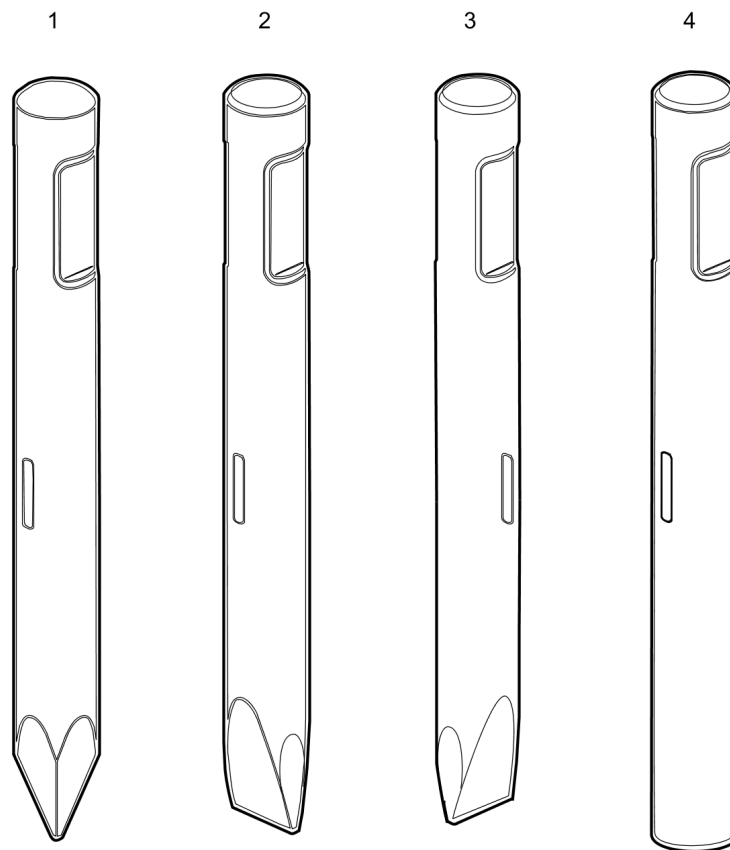
Item	Part No.	Name	Qty	L
-	3360992340	Hydraulic hose, I.D. 25 (1"), both ends M42 x 2 conical seal 24°, length 2300 mm (91 in.)	2	
-	3361853859	Hydraulic hose, I.D. 25 (1"), both ends M42 x 2 conical seal 24°, length 2800 mm (110 in.)	2	

**Options / accessories** Optional equipment

Refer to Parts Online for the most up to date information. The printed information might be outdated.

Tue May 16 08:52:42 UTC 2017

Item	Part No.	Name	Qty	L
900	3363091200	Chisel paste cartridge, 12 x 500 g (1.1 lbs)	1	
901	3363034567	Grease gun for 500 g cartridge	1	
902	3360433774	Grease nipple	1	
903	3363089844	Maintenance and charging box with nitrogen cylinder, 2 l, 0.43 gal (0.53 US gal)	1	
904	3363094940	Maintenance and charging box without nitrogen cylinder	1	
905	3363068255	Test gauge lower wear bush	1	
906	3363094952	Inside callipers upper wear bush	1	
907		Adapter plate matching the carrier. Consult the Atlas Copco Customer Center/Dealer in your area.	1	
908	3363099799	Base plate with threaded inserts	1	
909	3363087303	Bolt kit	1	
910	3363100697	Base plate with through borings	1	
911	3363094575	Bolt kit	1	
912	3360209445	Allen key (22 mm)	1	
913	3363090531	Adapter kit for underwater applications	1	
914	3363092977	Piston retainer	1	

**Options / accessories** Working tools ClassicLine MB 1200

Item	Part No.	Name	Qty	L
1	3363082787	Moil point	1	A
2	3363082943	Chisel (cross)	1	B
3	3363094252	Chisel (parallel)	1	C
4	3363082945	Blunt tool	1	D

Comments for Page: Working tools ClassicLine MB 1200

(L)OCAL REMARKS

A | L=605 mm, LT=1150 mm, Wt=90.0 kg

L=23.82 inch, LT=45.28 inch, Wt=198.4 lb

B | W= 120mm, L=605 mm, LT=1150 mm, Wt=93.0 kg

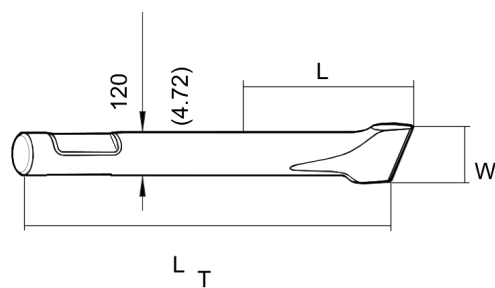
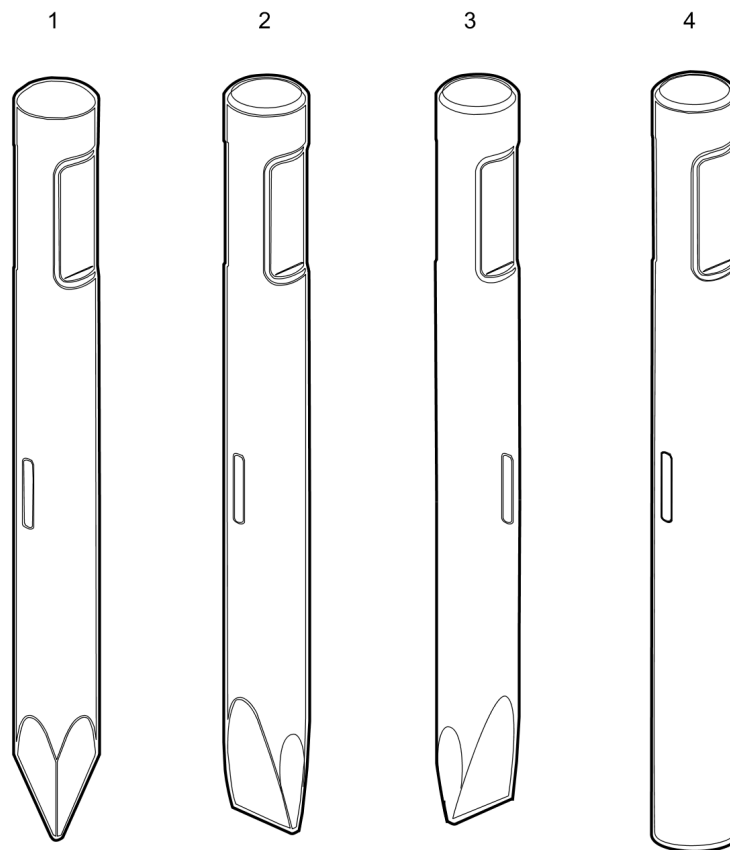
W=4.72 inch, L=23.82 inch, LT=45.28 inch, Wt=205.7 lb

C | W= 120mm, L=605 mm, LT=1150 mm, Wt=93.0 kg

W=4.72 inch, L=23.82 inch, LT=45.28 inch, Wt=205.7 lb

D | L=605 mm, LT=1150 mm, Wt=99.0 kg

L=23.82 inch, LT=45.28 inch, Wt=217.2 lb

**Options / accessories** Working tools ClassicLine MB 1200 DP



Item	Part No.	Name	Qty	L
1	3363082787	Moil point	1	A
2	3363082943	Chisel (cross)	1	B
3	3363094252	Chisel (parallel)	1	C
4	3363082945	Blunt tool	1	D

Comments for Page: Working tools ClassicLine MB 1200 DP

(L)OCAL REMARKS

A | L=580 mm, LT=1150 mm, Wt=90.0 kg

L=22.83 inch, LT=45.28 inch, Wt=198.4 lb

B |W= 120 mm, L=580 mm, LT=1150 mm, Wt=93.0 kg

W=4.72 inch, L=22.83 inch, LT=45.28 inch, Wt=205.7 lb

C | W= 120mm, L=580 mm, LT=1150 mm, Wt=93.0 kg

W=4.72 inch, L=22.83 inch, LT=45.28 inch, Wt=205.7 lb

D | L=580 mm, LT=1150 mm, Wt=99.0 kg

L=22.83 inch, LT=45.28 inch, Wt=217.2 lb





Any unauthorized use or copying of the contents or any part thereof is prohibited.  
This applies in particular to trademarks, model denominations, part numbers, and  
drawings.

