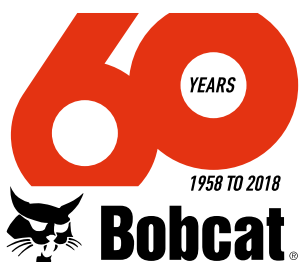




Bobcat®

CONSTRUCTION TELEHANDLERS



**3 YEAR
WARRANTY**



One Tough Animal®

BOBCAT TELESCOPIC CENTER OF EXCELLENCE WITH MORE THAN 50 YEARS OF EXPERIENCE

All Bobcat rigid telehandlers are designed and produced at our Center of Excellence in Pontchâteau, France. With more than 50 years of experience in creating material handling machines, this ISO 9001 certified factory applies the outstanding Bobcat Quality standards.



With a high level of technological integration from boom and frame welding to machine final assembly, our productivity and quality are ensured by modern production equipment such as welding robots, shot-blasting line, two-layer paint booth, and world-class components integration.

Each machine produced in this factory goes through a rigorous and extensive testing process before delivery, including: regulatory checks, performance compliance, quality inspections and all machine functionalities.

OUR STANDARD 3-YEAR MANUFACTURER WARRANTY BENEFITS YOU IN MANY WAYS*

With 50 years of experience in compact equipment design, Bobcat has a proven reputation for high quality standards and best-in-class technologies.

Every day, all of our energy is focused on delivering high-quality products through selection of leading and proven suppliers, integrated design, reliability/endurance testing, and a manufacturing process in which 100% of our production units are individually checked and quality approved.



The level of excellence achieved on Bobcat Telescopic Handlers leads Bobcat company to offer a 3-year standard warranty (or 3000 hours, whichever occurs first).

Efficient and Reliable, a Bobcat Telescopic Handler is built to last and to do the job every day as a real partner.

NEW BOBCAT STAGE IV ENGINES: HIGH PERFORMANCE AND EXTREME RELIABILITY!

Common Rail

Engine Control Unit (ECU)

High Pressure Pump



Bobcat has designed its own Stage IV turbo-charged engines from Telehandler user requirements: adapted performances, extreme reliability, low fuel consumption and cost-effective maintenance.

All features in a compact design for higher visibility. Our in-house Center of Excellence for engines has extensive experience:

- 50 years of Engine Group experience in engine development, combined with 50 years of experience in compact equipment development.
- More than 1.5 million engines produced as top OEM manufacturer for a variety of industries: industrial machines, military vehicles, commercial vehicles, power generation, marine, ... Designed in collaboration with some of the world's top engineering consultants and engine design firms.

ENGINES		BOBCAT D34 STAGE IIIB - 75 HP	BOBCAT D34 STAGE IV - 100 HP	PERKINS 1104D-44TA STAGE IIIA
Emissions		Stage IIIB / Tier 4 Final	Stage IV / Tier 4 Final	Stage IIIA / Tier 3
Rated power	kW (HP)	55.2 (75) @ 2400 rpm	74.5 (100) @ 2400 rpm	74.5 (100) @ 2200 rpm
Max torque	Nm	325 @ 1400 rpm	430 @ 1400 rpm	410 @ 1400 rpm
Fuel / Cooling		Diesel / Liquid	Diesel / Liquid	Diesel / Liquid
Number of cylinders		4	4	3.4
Displacement	l	3.4	3.4	4.4
Fuel injection		Electronically controlled + High Pressure Common Rail	Electronically controlled + High Pressure Common Rail	Electronically controlled + High Pressure Common Rail
After-treatment system - Without Diesel Particulate Filter (DPF)	DOC Diesel Oxidation Catalyst	■	■	—
	EGR Exhaust Gas Recirculation	■	■	—
	SCR & AdBlue® Selective Catalytic Reduction with AdBlue® injection	—	■	—

Mastered costs of ownership

Lower fuel consumption, no downtime, lower maintenance costs...

Designed with latest technologies

Turbo-charged air management + High Pressure Common Rail with electronic regulation
= enhanced performance and lower fuel consumption

Field proven

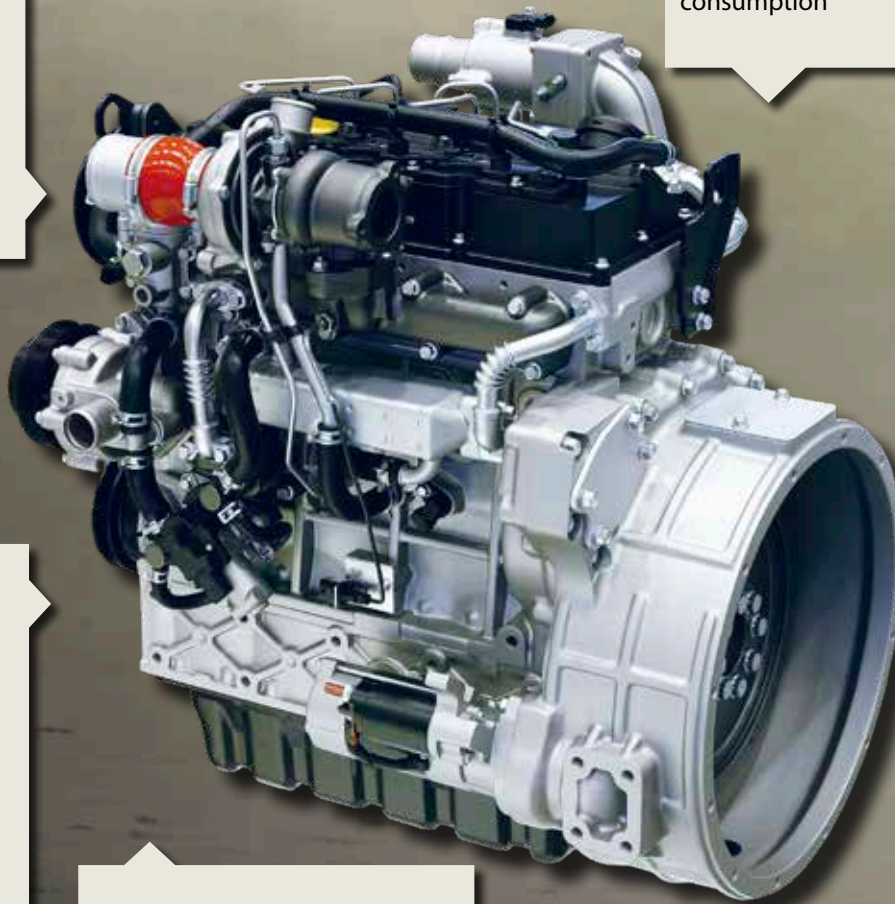
Already several tens of thousands of units being used with high customer satisfaction

Patented Ultra Low Particle Combustion technology

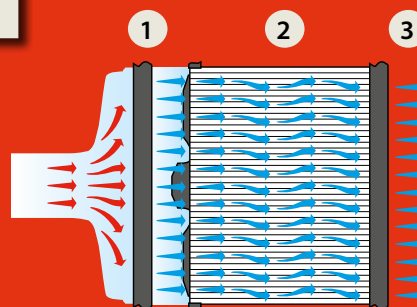
No DPF

High power output

and high low-end torque



Bobcat engineers have worked intensively to design a compact engine while maintaining high performance and allowing easy access to main maintenance points.



Incorporated cyclonic air pre-filter for efficient filtration in dusty environments and longer service life thanks to:

- 3-step filtration
- Pre-cleaners (1) which remove up to 95% of dust before reaching filters
- Easy access & filter replacement
- Straight air flow path allowing filter media to be packaged in a smaller space efficient profile with easier serviceability

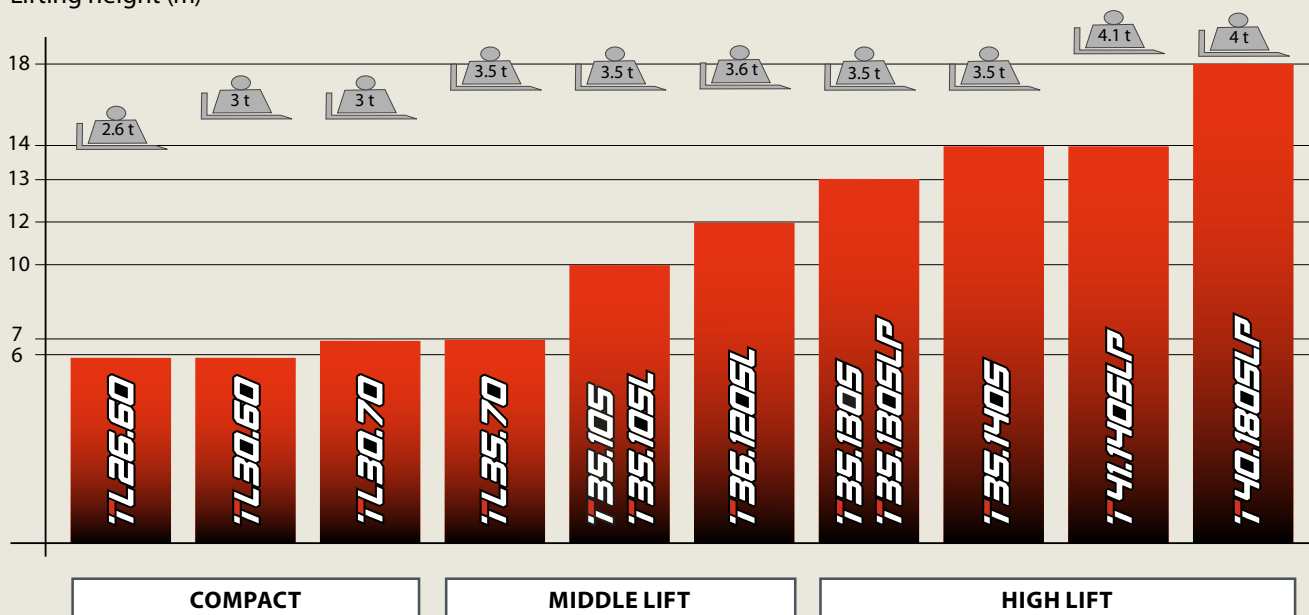



BOBCAT TELEHANDLERS: HIGH PERFORMANCE AT MAXIMUM REACH AND HEIGHT

Bobcat has more than 50 years of experience in designing top-class compact equipment, so telehandlers fit perfectly in the company's core business. With high stability, perfect balance, versatility, compactness, reliability and productivity... Bobcat Telehandlers offer high performance in tough conditions in agriculture, construction, waste management and many industrial applications.



Lifting height (m)



 Max. lift capacity (ton)

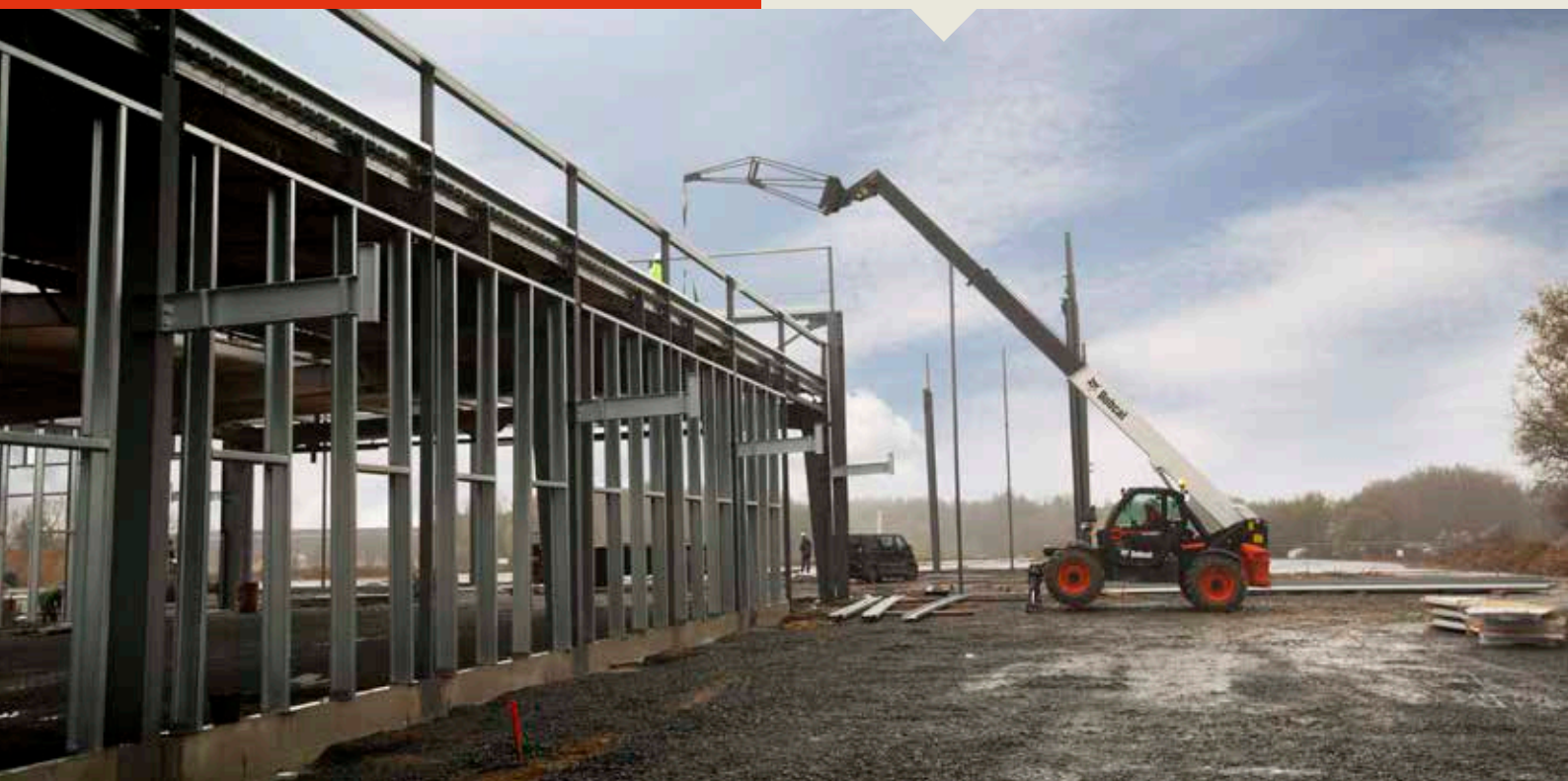


Telescopic loaders

TL series Bobcat Telescopic Loaders are made for heavy-duty and high-productivity jobs. Thanks to a specific frame and boom shielded design with top-quality Bobcat features, they are perfectly suited to intensive loading and applications in the construction and waste industries.

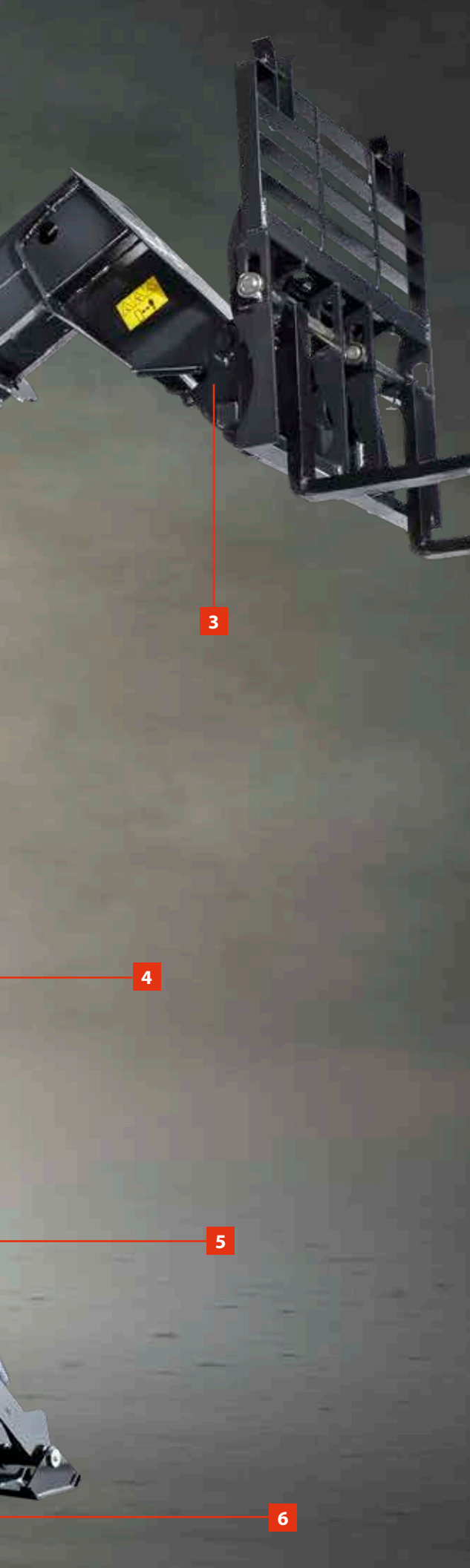
Telescopic handlers

With reach, agility and strength, Bobcat T series Telescopic Handlers are particularly popular in the construction and rental industries. The combination of high performance, top-class features and ease-of-use makes these machines the ideal solution for demanding jobs and precision work.



OUR TELEHANDLERS ARE
THE OPTIMAL CHOICE
FOR ALMOST ANY
CONSTRUCTION TASK





1. More power for less fuel

- New 100 HP Stage IV Bobcat engines with greater performances for lower fuel consumption, and DPF-free.
- 75 HP engine available.
- ECO mode: saves fuel with no compromise on lifting capacities

2. An ideal ergonomic workspace

- Logically designed and positioned controls
- All-in-one joystick for full control of the machine by hand
- Large cab with optional air suspension seat

3. Tool carrier concept

- Wide Bobcat attachment offering
- Standard auxiliary line at boom head
- Fast coupling system with integrated pressure release

4. Outstanding visibility

- Panoramic style cab with permanent visibility on working area
- Low boom pivot point
- Optimized engine hood design

5. Optimum safety

- Unique integrated frame-levelling
- Integrated side-shift system for use on tyres & on stabilizers

6. Compactness equals access

- Compact stabilizers for full capabilities in confined areas
- Four-wheel steering mode for short turning radius

7. Precise and intuitive operation

- Hydrostatic transmission
- Smooth & automatic transition from low to high speed
- Low tyre and brake wear for optimized Total Cost of Ownership
- Proportional controls of all boom movements

8. Shielded design

- Encapsulated vital components
- Box-welded frame
- Full bottom protective plate

HIGH-PERFORMANCE



Levelling function

Useful function when the job has to be done on irregular terrain with slopes. By compensating for the slope, this feature keeps the machine in a horizontal position, resulting in greater stability.



Boom Positioning System

Unique side-shift system allows a load high up on pallet forks to be moved laterally, without moving the machine – effective on both stabilizers and tyres.



Wireless remote control and man-platform ready

Optional man-platform and remote control predispositions will transform your telehandler into a plug & play solution for aerial works or precise lifting jobs, and without unreliable cable roller.

Smart Handling System (SHS)

This unique system adapts the machine to your work, combining productivity and accuracy.

You set the speed of the telescopic arms (lifting, telescoping, tilting) with the + and - buttons on the joystick.



Auxiliary line with flow management and fast coupling system (FCS)

Connecting hydraulically controlled attachments is made easy thanks to Bobcat Fast Coupling Systems with automatic pressure release.

Operator can adjust the hydraulic flow of the auxiliary line directly from the joystick.

Proportional engine fan with inverter

In very dusty environments, this option helps prevent radiator clog-up and adjusts fan speed according to temperature, resulting in lower noise and greater economy.



Cyclonic air pre-filter

Stage IV engines are all equipped with an integrated cyclonic air pre-filter to ensure efficient engine cooling.

SIMPLICITY

Ergonomics

- FNR on Joystick puts maximum control at your fingertips. Select the driving direction at the touch of a button, while still keeping a grip on both the steering wheel and the joystick for improved safety and productivity.
- Aux flow control is easily and precisely controlled from the joystick.
- Adjustable steering wheel
- Intuitive meaning and clear layout of all switches



1. Boom in/out
2. Front / Neutral / Reverse
3. Speed setting - Auxiliary hydraulic flow setting
4. Auxiliary hydraulic line

User-friendly electronic dashboard

Frame-levelling angle, boom angle, vehicle or engine speed, boom angle, auxiliary hydraulic flow setting, and more...

At the touch of a button, you have a clear, easy-to-read overview of all operating parameters.



Automatic parking brake

Standard feature for enhanced safety & operator convenience: parking brake is activated and deactivated manually or automatically, per operator preference.



ECO mode

ECO mode maintains hydraulic performances without using the engine's full power – so you reduce fuel consumption while working effectively. (Standard features available with Stage IV engine.)



Speed Management system (SMS)

The operator can adjust the maximum travel speed, from 60m/h to maximum speed. This feature offers great comfort and efficiency when having to travel at constant speed and using an attachment.



Compactness = access

- Easy-to-use compact stabilizers ensure that the machine's full capabilities can be used in the most confined working areas.
- Stabilizer detection on ground - sensor continuously monitors the pressure to prevent drops/leaks and to ensure safe stab usage at all times.



Engine basket – easy access - simple maintenance

- Engine basket has been redesigned to allow optimized visibility on right side as well as clear access to all main maintenance points.
- Increased hood opening and easy access to regular maintenance points such as oil filter, oil plug, air filter...



RELIABILITY & SERENITY

Total visibility

- Panoramic cab with large & rounded front window
- Large rear window
- Protective roof grid designed for maximum protection and enhanced visibility at full height.



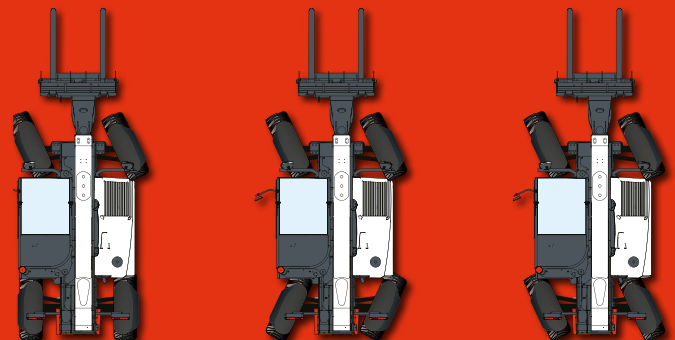
Hydrostatic transmission for easy and comfortable drive

- Compact design allows easier integration and thus better visibility, and its simplicity makes it reliable.
- Smooth and fast speed transition from low to high level without gear change (except on TL35.70), reducing tyre wear.
- Traction automatically and intuitively managed depending on torque and speed requirements, allowing the operator to focus on his task.
- Excellent engine brake and combined inching function, reducing brake disc wear.



3 steering modes with semi-automatic wheel realignment:

- Semi-automatic wheel realignment helps the operator easily realign front and rear wheels when changing between the 3 steering modes.
- Two-wheel steering mode: road and high speed use
- Four-wheel steering mode: minimum turning radius
- Crab-steer mode: easier positioning alongside walls and in confined spaces



Shielded design

- Box-welded frame with bottom protection steel plates
- Integrated boom head design
- Long-lasting wear pads, highly resistant bolts, large steel inserts



Full protection of vital components

The tilt cylinder in the boom head and most hydraulic components are fully protected.

Electronic battery disconnection

Electric switch ensures that the battery is not accidentally left connected overnight.



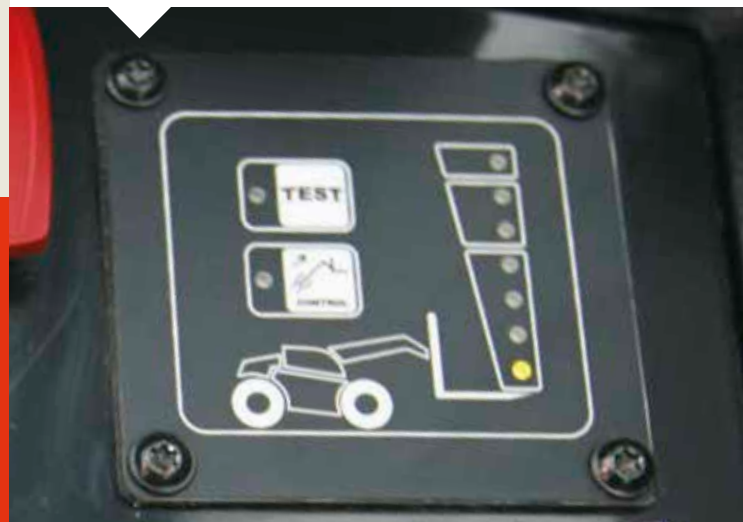
Additional work lights

Standard front & rear cab work lights provide good visibility. And combined with optional boom work light, it's even better!



Aggravating Movement Arrester

The load management system ensures safe operation at all times – regardless of the load. The display – positioned for maximum visibility – provides continuous clear information on load management.



BOBCAT ATTACHMENTS: BEST FIT FOR BOBCAT TELEHANDLERS!

Quick-Tach tool carrier: this easy, yet powerful, mounting system allows the operator to mount and dismount attachments quickly.

He can even change non-hydraulic attachments without leaving the cab.



**A WIDE RANGE OF ATTACHMENTS
TO COVER MOST CONSTRUCTION
APPLICATIONS:**



Pallet forks: rigid or floating



Man-platform: can be fixed, rotating and/or extendable

Radio remote control

- Radio remote control can be used on man-platforms or for precise load placement in confined areas.
- No unreliable cable roll-up, this remote is radio controlled for operating boom movements, auxiliary functions and levelling system remotely.



Remote control



Concrete basket



Winches: on extended jibs or not

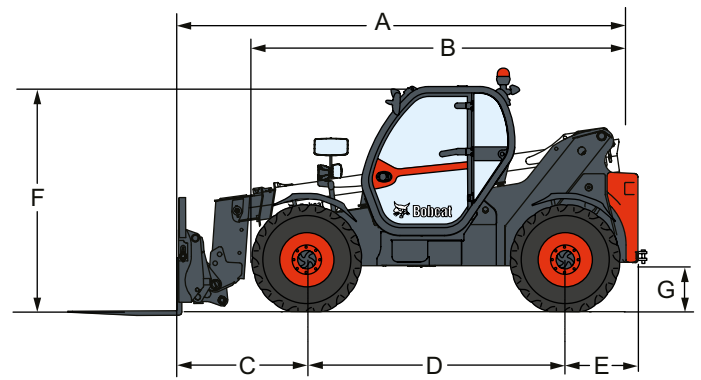


Buckets: for digging or light material handling



Jibs: extended or not, with hook or winch

SPECIFICATIONS AND DIMENSIONS



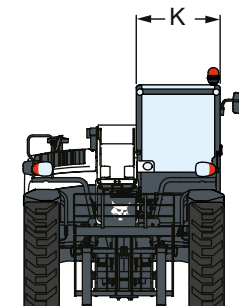
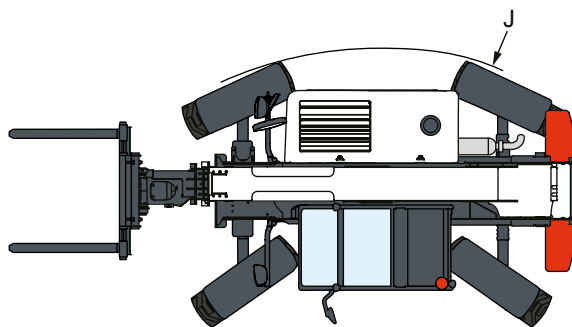
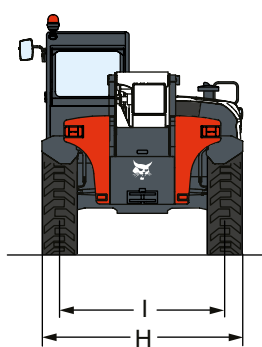
	UNIT	TL26.60	TL30.60	TL30.70	TL35.70
PERFORMANCE					
Maximum lift height with standard tyres (on stabilisers when equipped)	mm	5800	5800	6670	6889
Maximum lift capacity	kg	2600	3000	3000	3500
Maximum forward reach with standard tyres	mm	3100	3100	4020	3915
Crowding force	daN	4600	4600	4600	6200
Frame tilt angle	deg	–	–	–	–
Max travel speed - 100 HP engine	km/h	30 40 (option + 24")	30 40 (option + 24")	30 40 (option + 24")	30 40 (option + 24")
Max travel speed - 75 HP engine	km/h	30	30	30	30

ENGINE					
BOBCAT D34 - 75 HP - Stage IIIB / Tier 4 Final		■	■	■	–
BOBCAT D34 - 100 HP - Stage IV / Tier 4 Final		■	■	■	■
PERKINS 1104D-44TA - 100 HP - Stage IIIA / Tier 3		■	■	■	■

DIMENSIONS					
	Standard tyres		405/70-20"	405/70-20"	405/70-20"
A	Overall length to forks face	mm	4507	4507	5056
B	Overall length to front tyres	mm	4035	4035	4185
C	Length from front axle to forks face	mm	1020	1020	1400
D	Wheelbase	mm	2820	2820	2820
E	Length from rear axle to machine rear	mm	667	667	667
F	Overall height std cab	mm	Low cab: 2100 High cab: 2250	Low cab: 2100 High cab: 2250	Low cab: 2100 High cab: 2250
G	Ground clearance	mm	264	264	264
H	Width over standard tyres	mm	2100	2100	2100
	Overall width with stabilizers fully deployed	mm	–	–	–
I	Track width (front & rear)	mm	1700	1700	1700
J	External turning radius at tyres	mm	3717	3717	3717
K	Outside width of cab	mm	930	930	930
	Weight (unladen - 100HP engine & STD tyres)	kg	4900	5320	5620
	BPS Lateral amplitude	mm	–	–	–

TECHNOLOGIES			
Transmission		Hydrostatic motor with electronic regulation / 4-wheel drive	Hydrostatic motor with electronic regulation / 4-wheel drive + 2-speed gearbox
Hydraulics - Gear pump with LS valve - 100 l/min (80 l/m with 74 HP engine)		Electro-proportional with flow sharing	
Braking		Hydraulic passive brake system with oil immersed discs and automatic parking brake operation Inching function combined with brake pedal (slow drive speed without changing engine RPM)	

■ standard
– not available



T35.105	T35.105L	T36.120SL	T35.130S	T35.130SLP	T35.140S	T41.140SLP	T40.180SLP
10290	10290	11852	12468	12468	13656	13656	17466
3500	3500	3600	3500	3500	3500	4100	4000
6886	6886	8198	8764	8764	9449	9449	12800
7800	7800	7800	12300	12300	12300	12300	12300
–	+/-6	+/-6	–	+/-4	–	+/-4	+/-4
25 (20") 30 (24")	25 (20") 30 (24")	25 (20") 30 (24")	25 (20") 30 (24")	25 (20") 30 (24")	30	30	30
20 (20") 25 (24")	20 (20") 25 (24")	20 (20") 25 (24")	20 (20") 25 (24")	20 (20") 25 (24")	25	25	25

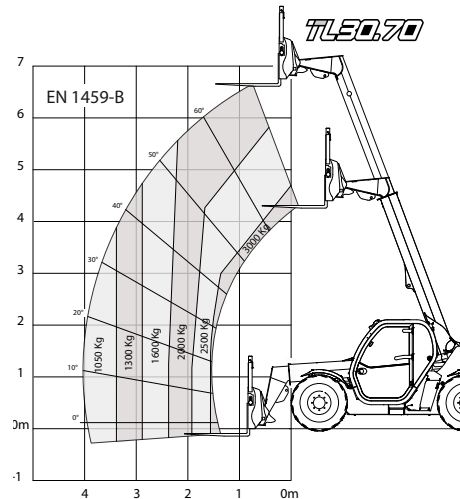
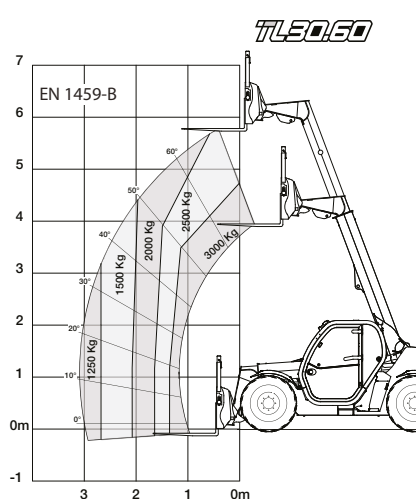
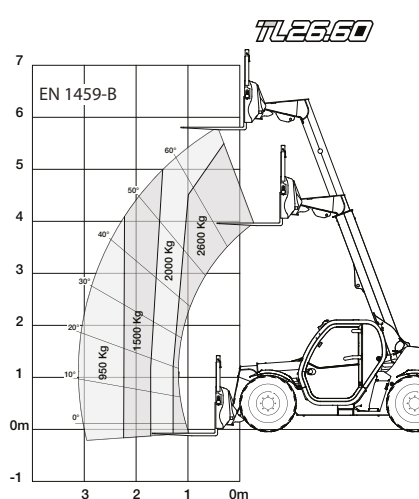
■	■	■	■	■	■	■	■
■	■	■	■	■	■	■	■
■	■	■	■	■	■	■	■

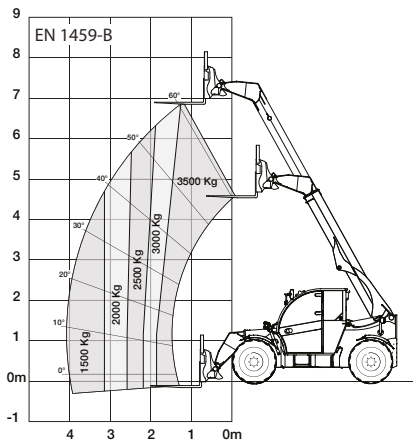
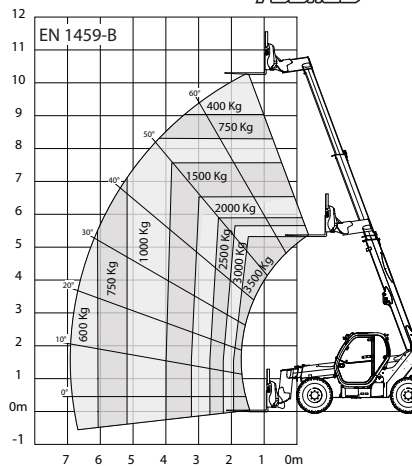
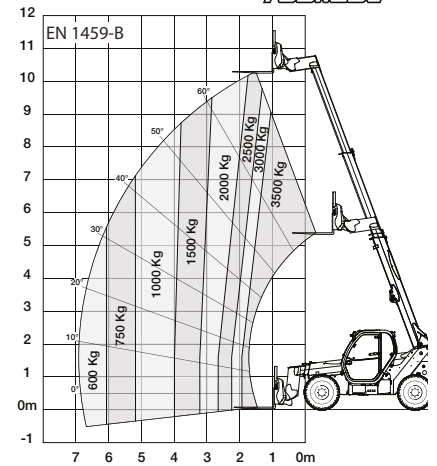
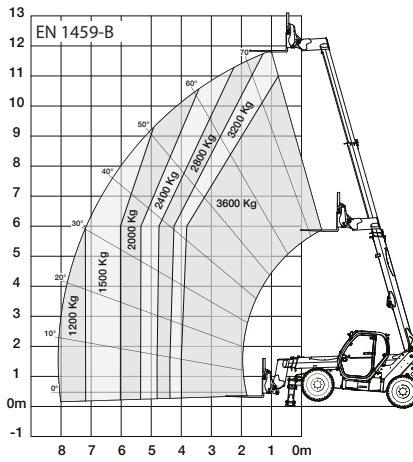
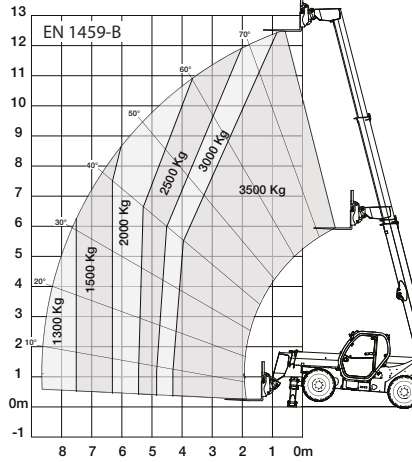
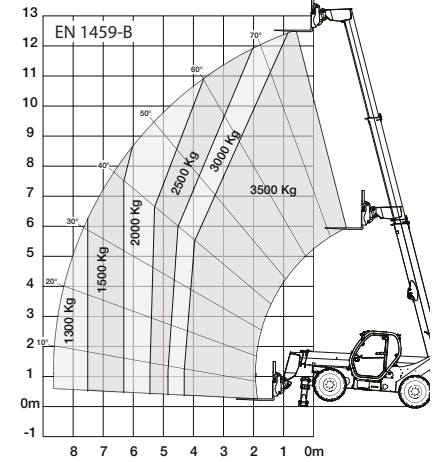
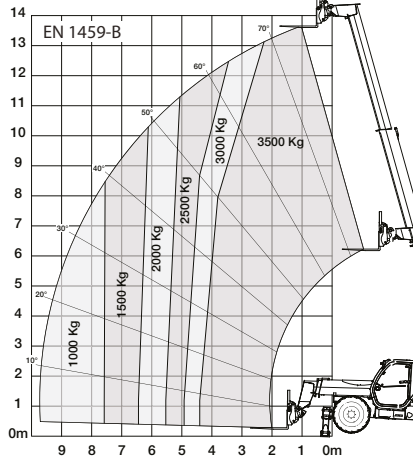
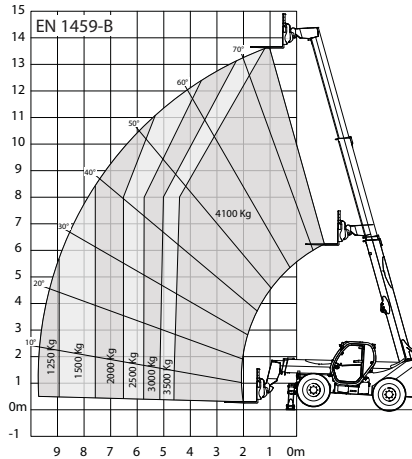
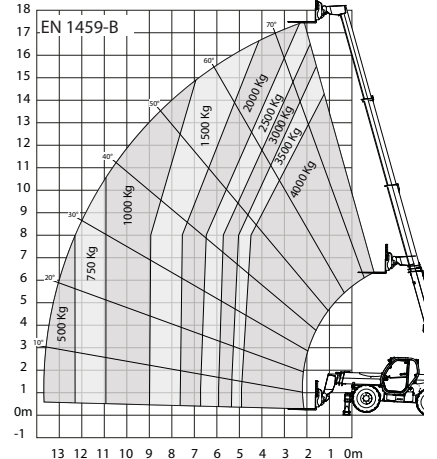
405/70-20"	405/70-20"	405/70-20"	405/70-20"	405/70-20"	400/80-24"	400/80-24"	400/80-24"
5071	5071	5442	5876	5876	6108	6108	6220
4192	4192	4192	4497	4497	4573	4573	4573
1422	1422	1793	1919	1919	2151	2151	2263
2850	2850	2850	2850	2850	2850	2850	2850
799	799	799	1107	1107	1107	1107	1107
2389	2389	2389	2393	2393	2480	2480	2480
415	415	415	422	422	509	509	509
2264	2264	2264	2418	2418	2418	2418	2418
–	–	2479	2619	2619	2619	2619	2619
1862	1862	1862	1992	1992	1992	1992	1992
3765	3765	3765	4150	4150	4150	4150	4150
930	930	930	930	930	930	930	930
7170	7170	8140	8655	8765	9130	10330	10750
–	–	–	–	+/- 450 mm	–	+/- 525 mm	+/- 675 mm

Hydrostatic motor with electronic regulation / 4-wheel drive
Electro-proportional
Hydraulic passive brake system with oil immersed discs and automatic parking brake operation Inching function combined with brake pedal (slow drive speed without changing engine RPM)

ROUGH TERRAIN LOAD CHARTS

(COMPLIANT WITH EN1459-B)



TL33.70**TES.105****TES.105L****TES.120SL****TES.130S****TES.130SLP****TES.140S****T4.140SLP****T4.180SLP**

FINANCING - AFTER MARKET - MAINTENANCE CONTRACT

Bobcat Financing Solutions

Bobcat is dedicated to offering financial solutions to end-customers through attractive retail finance programmes. Its financing division, Doosan Bobcat Financial Solutions, is active in more than 25 countries and offers tailor-made retail finance solutions according to country-specific market requirements. For more details on these programmes, please contact your local Bobcat dealer.

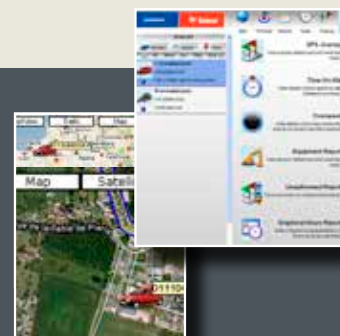
BobCARE PM

BobCARE PM is an efficient preventive maintenance programme for enhanced run time. Ask your dealer for the BobCARE PM customer guide.



BOBCATVision

BobCATVision is a synthesis tool that allows you to properly manage your BOBCAT machines and your service team. This is the 21st century way to manage fleets of machines and services: protect against theft, manage fleets, reduce cost, increase sales revenue, optimise service, improve control, increase customer satisfaction and support maintenance contracts.



MAXIMISED UPTIME

Full supporting Bobcat service:

No other manufacturer provides so many job-proven features to give you more uptime in the field. Features such as electronic battery switch and onboard diagnostics make the Bobcat telescopic handler more reliable and ensure that you can keep working right through until the job is done. And maximum uptime doesn't just mean you can stay in the field longer, – it also protects your investment by contributing to a higher resale value.



The service you trust from the dealer you know

- You'll have total peace of mind thanks to Bobcat's skilled and extensive dealer network and regular technical training programme.
- Bobcat dealers offer an adapted maintenance contract.

Easy maintenance

Minimised downtime gives you the edge when it comes to productivity. Time spent on routine maintenance makes a big difference, so we keep it quick by making sure you have easy access to the key maintenance components.

STANDARD AND OPTIONAL EQUIPMENT

	TL26.60 TL30.60 TL30.70	TL35.70	T35.10S T35.10SL	T36.120SL	T35.130S T35.130SLP	T35.140S	T41.140SLP T40.180SLP
FRONT SIDE							
Auxiliary hydraulic line on boom head with quick couplers and integrated pressure release system	■	■	■	■	■	■	■
Quicktach carriage with manual attachment lock	■	■	■	■	■	■	■
Quicktach carriage with hydraulic attachment lock	□	□	□	□	□	□	□
Competitive carriage with manual or hydraulic attachment lock	□	□	–	–	□	□	□
Floating forks with backrest	–	–	■	■	■	■	■
Lifting eye on boom head (3 tons max)	–	–	–	–	■	■	■
Boom wiring harness and electric connectors	□	□	□	□	□	□	□
Boom suspension	□	□	–	–	–	–	–
Work lights on boom	□	□	□	□	□	□	□
Winch ready	–	–	–	–	–	–	□
Man platform ready	–	–	–	–	–	–	□
Remote control system with on-board charger	–	–	□	□	□	□	□
Toolbox	□	□	–	–	–	–	–
CAB							
Full package of safety equipment: Aggravating Movement Arrester (EN15000), complete road & work lights (front & rear), rotating beacon, front and rear wipers with washer, right and left side mirrors, inner rear mirror, back-up alarm and spirit level (for machines with stabilizers)	■	■	■	■	■	■	■
Multifunctional joystick with proportional controls and forward/reverse drive	■	■	■	■	■	■	■
Automatic parking brake	■	■	■	■	■	■	■
Multifunction LCD screen	■	■	■	■	■	■	■
Speed Management System (SMS) to adjust max drive speed whatever engine RPM	■	■	■	■	■	■	■
Auxiliary Flow Management (AFM) to adjust and engage a continuous hydraulic flow	■	■	■	■	■	■	■
ECO mode for lower engine fuel consumption (except Stage IIIA engines)	■	■	■	■	■	■	■
ROPS / FOPS Cab with tinted glasses (Level II)	■	■	■	■	■	■	■
LED road light pack	□	□	–	–	–	–	–
LED work light pack (x6)	□	□	–	–	–	–	–
Forward/Reverse control on steering wheel lever	□	□	□	□	□	□	□
Forward/Reverse control on joystick & steering wheel	□	□	–	–	–	–	–
Protective grill for windshield (front and roof)	□	□	□	□	□	□	□
High comfort air suspension seat	□	□	□	□	□	□	□
Air conditioning	□	□	□	□	□	□	□
Anti-theft ignition system with keypad	□	□	□	□	□	□	□
ENGINE & TRANSMISSION							
Electronic Battery Disconnection (EBD)	■	■	■	■	■	■	■
Built-in air cyclonic prefilter with automatic dust evacuation (except Stage IIIA engines)	■	■	■	■	■	■	■
Limited slip differential in front axle	–	■	–	–	–	–	–
High speed transmission 40 km/h (with 24" tyres)	□	□	–	–	–	–	–
Fan inverter with manual & auto modes	□	□	□	□	□	□	□
Cyclonic air prefilter for Stage IIIA engines	□	□	□	□	□	□	□
TYRES							
APPLICATION							
400/80-20"	Multi-purpose	■	■	■	■	■	–
400/80-24"	Multi-purpose	□	□	□	□	□	■
Michelin - 400/80-24" 162A8 IND TL POWER CL	Multi-purpose	□	□	□	□	□	□
Dunlop - 405/70-20" SPT9 MPT	Semi-industrial	□	□	□	–	–	–
Dunlop - 405/70-24" SPT9 MPT	Semi-industrial	□	□	□	□	□	–
Nokian - 480/65R24" TRI STEEL	Severe / Recycling	–	□	–	–	–	–
Michelin - 400/70R20" BIBLOAD	Hard surface	□	–	–	–	–	–

- standard
- optional
- not available

Other options available, please contact your Bobcat dealer to know more.



Bobcat is a Doosan Company.
Doosan is a global leader in construction equipment, power & water solutions, engines, and engineering proudly serving customers and communities for more than a century. Bobcat and the Bobcat logo are registered trademarks of Bobcat Company in the United States and various other countries.
©2018 Bobcat Company. All Rights Reserved.



Bobcat®

www.bobcat.com

